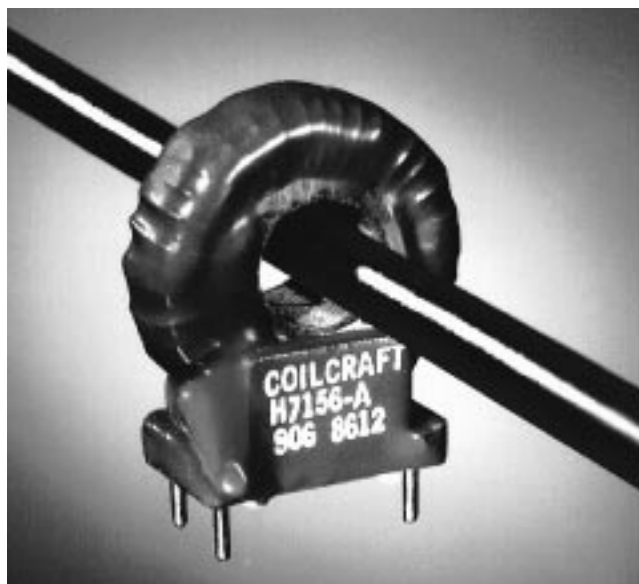


50/60 Hz Current Sensors – CS60 Series

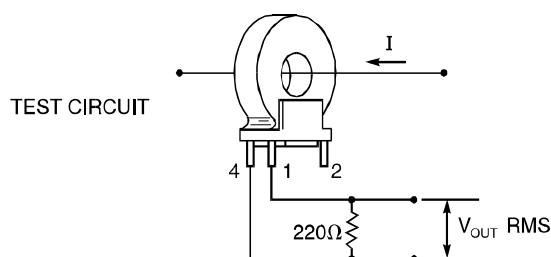
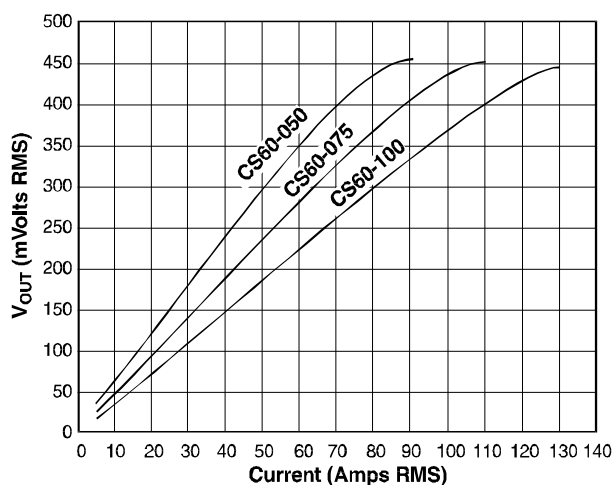


The CS60 Series measures current from 5 to 100 amps RMS. Applications include sensing branch circuit overload and detecting load drop or shutdown. The sensor functions as the encapsulated secondary of a current transformer, while the conductor carrying the current to be measured serves as the "one turn primary." Sensitivity may be enhanced by increasing primary turns.

Minimum wall thickness of the hole is 0.5 mm which meets IEC 380 and other requirements when used with an insulated conductor. These parts are mountable on printed circuits and have a third terminal added for mechanical stability.

Samples of these and other current sensors are available for evaluation. To order, contact Coilcraft.

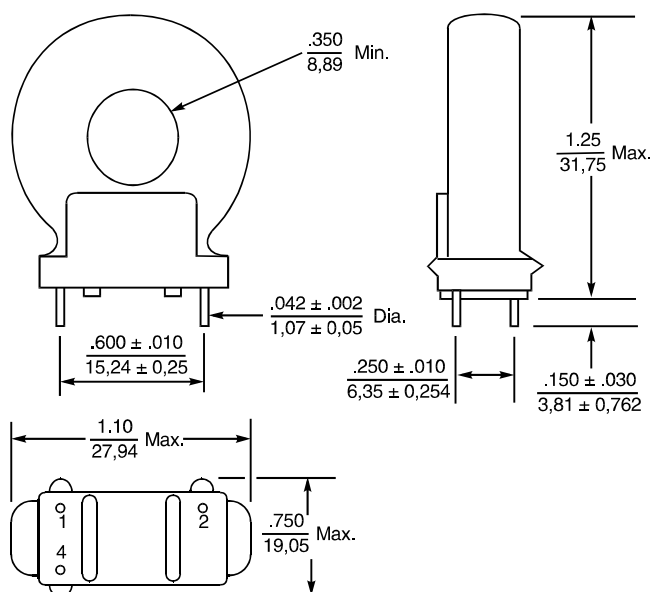
TYPICAL RESPONSE



SPECIFICATIONS

Part Number	Recommended Current	V Out Tolerance
CS60-050	5-50 A RMS	± 10%
CS60-075	5-75 A RMS	± 10%
CS60-100	5-100 A RMS	± 10%

(For values below 10 A RMS, see CS60-010, Document 133.)



Coilcraft

Document 134 Revised 3/12/96