

# TET ICE CONNECTOR NQPACK/YQPACK/HQPACK

**NQPAC** Connector for Target Board.

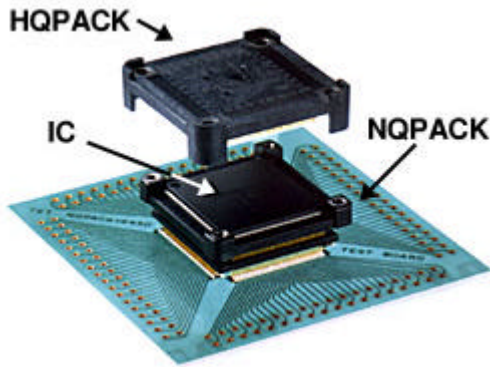
**K :**  
**YQPAC** Joint Connector between NQPACK and YQSOCKET,  
**K :** PWB or FPC.

**HQPAC** Top Cover for IC Package.  
**K :**

## ◆ Features

- IC package can be placed on NQPACK with HQPACK.
- Soldering pads of IC packages and NQPACK are identical.
- Highly reliable contacts, which are isolated to adjacent contacts with mold groove.

## ◆ NQPACK+IC+HQPACK



NQPACK, HQPACK and YQPACK are the emulation connectors;  
 Please use the connectors for test applications only.

## ◆ NQPACK+YQPACK



IC package should not be placed between NQPACK and YQPACK.

## ◆ Part Number Designation

**NQPACK### @ - \*\***

**YQPACK### @ |**

**HQPAC** **K### @ + -- SL** : Long Size Screw(It is Possible to mount Target board.)

**K** | |

**Pin Count** --+ | + -----

+-- **IC Package** - + -- S: Square

|  
 + -- R:  
 Rectangle

**Pitch** - + --

Z: 1.0mm A: 0.8mm B: 0.65mm

D: 0.5mm E: 0.4mm F: 0.3mm

◆ Product range/Applicable size of IC Package/Recommended PWB footpattern

(Unit ; mm)Sep.1999

Pin Count	IC Package			Part No.			Recommended PWB Foot Pattern			
	Pitch	Body Size	IC Size	NQPAC	HQPAC	YQPAC	X	Y	Z	
	P	A	F	K	K	K				
44	0.8	10.0 x 10.0	12.0 x 12.0	044SA	044SA	044SA	13.0	13.0	2.0	♣
			13.2 x 13.2	044SA132	044SA132	044SA132	14.2	14.2	2.3	♣
48	0.5	7.0 x 7.0	9.0 x 9.0	048SD	048SD	048SD	10.0	10.0	1.5	♣
52	0.65	10.0 x 10.0	12.0 x 12.0	052SB	052SB	052SB	13.0	13.0	2.0	♣
64	0.5	10.0 x 10.0	12.0 x 12.0	064SD	064SD	064SD	13.0	13.0	2.0	♣
			14.8 x 14.8		064SB	064SB	15.8	15.8	2.0	
	0.65	12.0 x 12.0	14.0 x 14.0	064SB	064SB140	064SB	15.0	15.0	2.0	♦
			17.6 x 17.6	064SA	064SA		18.6	18.6	2.3	
	0.8	14.0 x 14.0	16.0 x 16.0	064SA160	064SA160	064SA	17.2	17.2	2.0	♦
			17.6 x 23.6	064RZ	064RZ	064RZ	18.6	24.6	2.5	♦
80	0.4	12.0 x 12.0	14.0 x 14.0	080SE	080SE	080SE	15.1	15.1	2.0	♣
	0.5	12.0 x 12.0	14.0 x 14.0	080SD	080SD	080SD	15.0	15.0	2.0	♣*
			17.2 x 17.2		080SB		18.2	18.2	2.1	
	0.65	14.0 x 14.0	16.0 x 16.0	080SB	080SB160	080SB	17.2	17.2	1.8	♦
			17.6 x 23.6		080RA		18.6	24.6	2.3	
	0.8	14.0 x 20.0	16.8 x 22.8	080RA	080RA168	080RA	17.8	23.8	2.3	♦
100	0.4	12.0 x 12.0	14.0 x 14.0	100SE	100SE	100SE	15.1	15.1	2.0	♣
	0.5	14.0 x 14.0	16.0 x 16.0	100SD	100SD	100SD	17.0	17.0	2.0	♣
	0.65	18.0 x 18.0	22.9 x 22.9	100SB	100SB	100SB	23.9	23.9	2.5	♣
			17.6 x 23.6		100RB		18.6	24.6	2.3	
			16.0 x 22.0		100RB1622		17.0	23.0	1.5	
			16.8 x 22.8	100RB	100RB168	100RB	17.8	23.8	1.9	♦
		17.9 x 23.9		100RB179		18.9	24.9	2.4		
120	0.4	14.0 x 14.0	16.0 x 16.0	120SE	120SE	120SE	17.0	17.0	2.0	♣
	0.5	16.0 x 16.0	18.0 x 18.0	120SD	120SD	120SD	19.0	19.0	1.7	♦
			22.0 x 22.0	120SD20	120SD20	120SD20	23.0	23.0	2.0	♦
			22.6 x 22.6		120SD206		23.6	23.6	2.0	
128	0.4	14.0 x 14.0	16.0 x 16.0	128SE	128SE	128SE	17.1	17.1	2.0	♣
	0.5	18.0 x 18.0	20.0 x 20.0	128SD	128SD	128SD	21.0	21.0	2.0	♦
	0.5	14.0 x 20.0	16.0 x 22.0	128RD	128RD	128RD	17.0	23.0	2.0	♦
144	0.4	16.0 x 16.0	18.0 x 18.0	144SE	144SE	144SE	19.1	19.1	2.0	♦
	0.5	20.0 x 20.0	22.0 x 22.0	144SD	144SD	144SD	23.0	23.0	2.0	♦
156	0.4	14.0 x 20.0	16.0 x 22.0	156RE	156RE	156RE	17.0	23.0	2.0	♦
160	0.5	24.0 x 24.0	26.0 x 26.0	160SD260	160SD260	160SD260	27.1	27.1	2.0	♦
	0.65	28.0 x 28.0	32.0 x 32.0	160SB	160SB	160SB	33.0	33.0	2.5	♦*
168	0.65	28.0 x 28.0	31.2 x 31.2	168SB	168SB	168SB	32.2	32.2	2.1	♦
176	0.4	20.0 x 20.0	22.0 x 22.0	176SE	176SE	176SE	23.1	23.1	2.0	♣
	0.5	24.0 x 24.0	26.0 x 26.0	176SD	176SD	176SD	27.0	27.0	2.0	♦

208	0.5	28.0 x 28.0	30.0 x 30.0	208SD	208SD	208SD	31.0	31.0	2.0	♦
			30.6 x 30.6		208SD306		31.6	31.6	2.0	
240	0.5	32.0 x 32.0	34.6 x 34.6	240SD	240SD	240SD	35.6	35.6	2.0	♦
256	0.4	28.0 x 28.0	30.6 x 30.6	256SE	256SE	256SE	31.6	31.6	2.0	♦

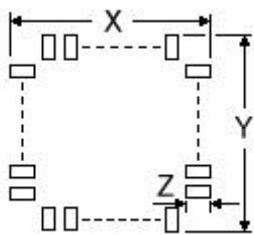
• Parts marked \* are not compatible with TQPACK

• Diameter of Long Screw --> ♣: M1.4mm ♦: M3mm ♠: M2mm

**HOW TO SELECT CONNECTOR :**

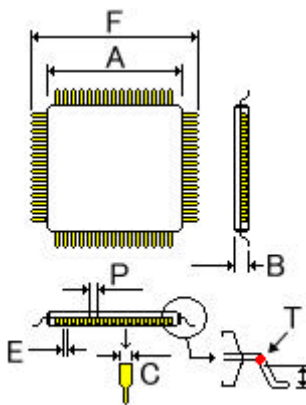
If package is 100 pins, 0.65 mm pitch, body size 14.0 x 20.0 mm, and IC size (outer size) 16.8 x 22.8 mm including lead pitch, the suitable connectors are NQPACK100RB, HQPACK100RB168, and YQPACK100RB.

• Recommended foot pattern.



• Recommended foot pattern shown on left is for NQPACK soldering. But please refer to IC package foot pattern recommended by IC manufacturer also, when the package is soldered on the same foot pattern.

**◆ Applicable size of IC Package**



- $B = 3.0$  Max. --- IC thickness
  - $D = 0.65$  Min. --- Lead height
  - $C, E =$   
 0.4 mm Pitch ; 0.20 mm Max.  
 0.5 mm Pitch ; 0.25 mm Max.  
 0.65 mm Pitch ; 0.35 mm Max.  
 0.8 mm Pitch ; 0.45 mm Max.  
 1.0 mm Pitch ; 0.45 mm Max.
  - $D$  may be any height, if  $C$  dimension is half of the  $P$ .
  - (the center spacing).
  - $T =$  Tie bar of IC lead.
- [\\*Please contact us if dimensions are problems.](#)

[\[Next page\]](#)[\[Home\]](#)[\[Top\]](#)