

4

3

2

1

TABLE OF CONTENTS

1	COVER SHEET
2	NOTES
3	BOARD CIRCUIT
4	TEST CIRCUIT

REVISIONS

ZONE	REV	DESCRIPTION	DATE	APPROVED
	X1	FIRST DRAFT	06/7/02	C. B.
	X2	ADD EXTRA CAP, RES	06/10/02	C. B.

D

D

C

C

B

B

A

A

Dwg. No. 63A11xxxs

REV: X2

MOTOROLA RESERVES THE RIGHT TO MAKE CHANGES WITHOUT FURTHER NOTICE TO ANY PRODUCTS HEREIN TO IMPROVE RELIABILITY, FUNCTION, OR DESIGN. MOTOROLA DOES NOT ASSUME ANY LIABILITY ARISING OUT OF THE APPLICATION OR USE OF ANY PRODUCT OR CIRCUIT DESCRIBED HEREIN.



MOTOROLA

6501 WILLIAM CANNON DRIVE AUSTIN, TEXAS 78735-8598 USA

DESIGNED BY: CLIFFORD BROWN	DATE: 6/7/02
DRAWN BY: CLIFFORD BROWN	DATE: 6/7/02
PROJECT LEAD: CLIFFORD BROWN	DATE: 6/7/02
PRODUCT SPECIALIST: KURT LORENZEN	DATE: 6/7/02

TITLE:
Musca Silver Dollar Board
DRAWING TITLE 2

SIZE A	NAME: rev_x2 ROOT: rev_x2	DRAWING NO. 63A11xxxs	REV: X2
-----------	------------------------------	--------------------------	------------

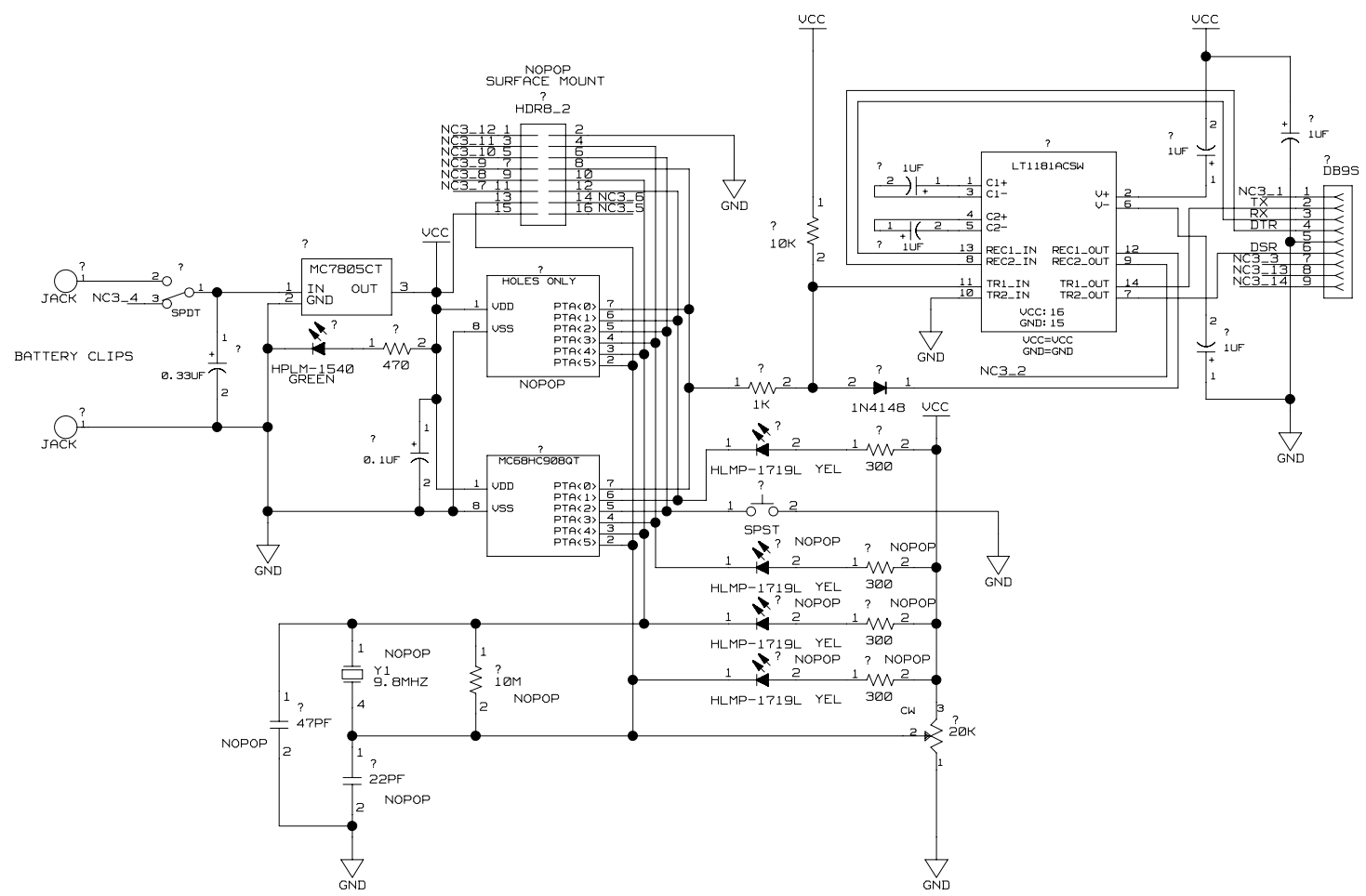
LAST_MODIFIED=Mon Jun 10 10:39:14 2002 SHEET 1 OF 4

4

3

2

1



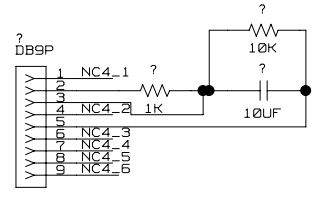
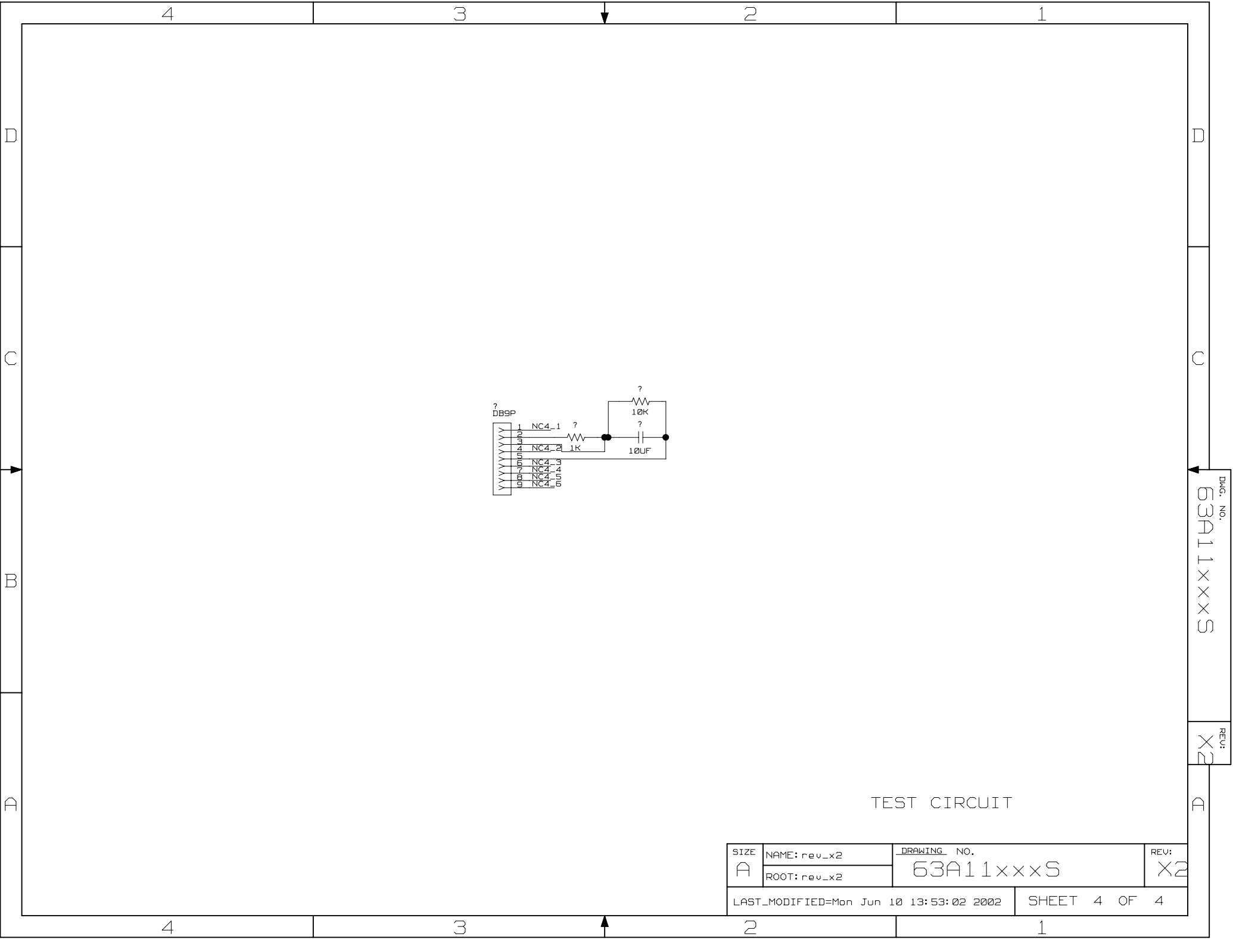
BOARD CIRCUIT

NOTE: ALL COMPONENTS ARE THRU-HOLE UNLESS OTHERWISE SPECIFIED.

SIZE A	NAME: rev_x2 ROOT: rev_x2	DRAWING NO. 63A11xxxS	REV: X2
LAST_MODIFIED=Mon Jun 10 13:51:42 2002		SHEET 3 OF 4	

Dwg. No. 63A11xxxS

REV: X2



TEST CIRCUIT

SIZE	NAME: rev_x2	DRAWING NO.	REV:
A	ROOT: rev_x2	63A11xxxxS	X2
LAST_MODIFIED=Mon Jun 10 13:53:02 2002		SHEET 4 OF 4	

Dwg. No. 63A11xxxxS
 REV: X2