

TLC320AD90C ***Data Manual***

Stereo Audio Codec

SLAS173
March 1998



Printed on Recycled Paper

IMPORTANT NOTICE

Texas Instruments (TI) reserves the right to make changes to its products or to discontinue any semiconductor product or service without notice, and advises its customers to obtain the latest version of relevant information to verify, before placing orders, that the information being relied on is current.

TI warrants performance of its semiconductor products and related software to the specifications applicable at the time of sale in accordance with TI's standard warranty. Testing and other quality control techniques are utilized to the extent TI deems necessary to support this warranty. Specific testing of all parameters of each device is not necessarily performed, except those mandated by government requirements.

Certain applications using semiconductor products may involve potential risks of death, personal injury, or severe property or environmental damage ("Critical Applications").

TI SEMICONDUCTOR PRODUCTS ARE NOT DESIGNED, INTENDED, AUTHORIZED, OR WARRANTED TO BE SUITABLE FOR USE IN LIFE-SUPPORT APPLICATIONS, DEVICES OR SYSTEMS OR OTHER CRITICAL APPLICATIONS.

Inclusion of TI products in such applications is understood to be fully at the risk of the customer. Use of TI products in such applications requires the written approval of an appropriate TI officer. Questions concerning potential risk applications should be directed to TI through a local SC sales office.

In order to minimize risks associated with the customer's applications, adequate design and operating safeguards should be provided by the customer to minimize inherent or procedural hazards.

TI assumes no liability for applications assistance, customer product design, software performance, or infringement of patents or services described herein. Nor does TI warrant or represent that any license, either express or implied, is granted under any patent right, copyright, mask work right, or other intellectual property right of TI covering or relating to any combination, machine, or process in which such semiconductor products or services might be or are used.

Contents

<i>Section</i>	<i>Title</i>	<i>Page</i>
1	Introduction	1-1
1.1	Features	1-1
1.2	Functional Block Diagram	1-2
1.3	Terminal Assignments	1-3
1.4	Ordering Information	1-3
1.5	Terminal Functions	1-4
2	Functional Description	2-1
2.1	Analog Input/Output Ports	2-1
2.1.1	Analog Outputs	2-1
2.1.2	Analog Inputs	2-1
2.2	Digital Interface	2-1
2.2.1	AC-Link Signal Definitions	2-2
2.2.2	Protocol	2-3
2.2.3	Frame Contents	2-5
2.2.4	AC-Link Low-Power Mode	2-7
2.3.1	Reset Register (Index 00h)	2-10
2.3.2	Play Master Volume Stereo and Mono Registers (Index 02h and 06h)	2-10
2.3.3	PC_BEEP Volume Register (Index 0Ah)	2-10
2.3.4	Analog Mixer Input Gain Registers (Index 0Ch – 18h)	2-11
2.3.5	Record Select Control Register (Index 1Ah)	2-11
2.3.6	Record Gain Register (Index 1Ch)	2-12
2.3.7	General Purpose Register (Index 20h)	2-13
2.3.8	Power-Down Control/Status Register (Index 26h)	2-13
2.3.9	Reserved Registers (Index 28h – 59h)	2-14
2.3.10	Vendor Reserved Registers (Index 5Ah – 7Ah)	2-14
2.3.11	Vendor ID Registers (Index 7Ch – 7Eh)	2-14
2.4	Clocking	2-15
2.5	Resetting the TLC320AD90C	2-16
2.5.1	Cold Reset	2-16
2.5.2	Warm Reset	2-16
2.5.3	Reset From Test Mode	2-16
2.6	Microphone Input Programmable Gain Amplifier	2-17
2.7	Power-Down Management	2-17
2.8	Mixer Functions	2-19
3	Specifications	3-1
3.1	Absolute Maximum Ratings Over Operating Free-Air Temperature Range	3-1
3.2	Recommended Operating Conditions	3-1
3.3	Electrical Characteristics	3-2

3.3.1	Power Supplies, $T_A = 25^\circ\text{C}$, $AV_{DD} = DV_{DD} = 5\text{ V} + 5\%$	3-2
3.3.2	Static Digital Specifications, $T_A = 25^\circ\text{C}$, $AV_{DD} = DV_{DD1} = DV_{DD2} = 5\text{ V} + 5\%$	3-2
3.3.3	Static Digital Specifications, $T_A = 25^\circ\text{C}$, $AV_{DD} = DV_{DD1} = 5\text{ V} + 5\%$, $DV_{DD2} = 3.3\text{ V} + 5\%$	3-2
3.3.4	Analog Electrical Characteristics	3-3
3.4	Timing Requirements	3-6
3.4.1	AC-Link Low-Power Mode Timing, $T_A = 25^\circ\text{C}$, $AV_{DD} = DV_{DD} = 5\text{ V dc}$, $AV_{SS} = DV_{SS} = 0\text{ V}$, 50-pF External Load	3-6
3.4.2	AC-Link Timing, $T_A = 25^\circ\text{C}$, $AV_{DD} = DV_{DD} = 5\text{ V dc}$, $AV_{SS} = DV_{SS} = 0\text{ V}$, 50-pF External Load	3-6
3.4.3	Data Setup and Hold Timing	3-7
3.4.4	Signal Rise and Fall Timing	3-7
3.4.5	Warm/Cold Reset Timing, $T_A = 25^\circ\text{C}$, $AV_{DD} = DV_{DD} = 5\text{ V dc}$, $AV_{SS} = DV_{SS} = 0\text{ V}$, 50-pF External Load	3-7
3.4.6	ATE Test Mode Timing, $T_A = 25^\circ\text{C}$, $AV_{DD} = DV_{DD} = 5\text{ V dc}$, $AV_{SS} = DV_{SS} = 0\text{ V}$, 50-pF External Load	3-7
4	Parameter Measurement Information	4-1
5	Application Information/System Usage	5-1
5.1	Software Driver Support for the Texas Instruments TLC320AD90C Stereo Codec	5-1
5.2	The Texas Instruments TLC320AD90C Connected to an AC'97 Compliant Digital Controller	5-2
5.3	Testability	5-2
5.3.1	Activating the Test Modes	5-2
5.3.2	Test Mode Functions – ATE in Circuit Test Mode	5-2
	Appendix A Mechanical Data	A-1

List of Illustrations

<i>Figure</i>	<i>Title</i>	<i>Page</i>
2-1	AC-Link Bidirectional Audio Frame (As Implemented)	2-2
2-2	AC-Link Signals	2-2
2-3	AC-Link Protocol	2-3
2-4	TLC320AD90C Power-Down Mode Timing	2-7
2-5	Crystal Configuration	2-15
2-6	External Oscillator Configuration	2-15
2-7	Microphone Programmable Gain Amplifier With Two Electret Microphones	2-17
2-8	TLC320AD90C Power-Down/ Power-Up Flow Example	2-18
2-9	TLC320AD90C Power-Down/Power-Up Flow Example With Analog Still Alive	2-18
4-1	AC-Link Low-Power Mode Timing	4-1
4-2	Clock Timing	4-1
4-3	Data Setup and Hold Timing	4-1
4-4	Signal Rise and Fall Timing	4-2
4-5	Cold Reset Timing	4-2
4-6	Warm Reset Timing	4-2
4-7	ATE Test Mode Timing	4-2
5-1	System Diagram	5-1
5-2	Connection to an AC'97 Digital Controller	5-2

List of Tables

<i>Table</i>	<i>Title</i>	<i>Page</i>
2-1	AC-Link Signal Definitions	2-3
2-2	SDATA_OUT Frame Contents (Driven by Audio Controller)	2-5
2-3	SDATA_IN Frame Contents	2-6
2-5	Reset Register ID Bit Definitions	2-10
2-6	Play Master Volume Register Definitions	2-10
2-7	PC_BEEP Register Definitions	2-11
2-8	Analog Mixer Input Gain Register Definitions	2-11
2-9	Right Record Select Control Register Definitions	2-12
2-10	Left Record Select Control Register Definitions	2-12
2-11	Record Gain Register Definitions	2-12
2-12	General Purpose Register Definitions	2-13
2-13	Power-Down Control/Status Register Bits D0-D3 Definitions	2-13
2-14	Power-Down Control/Status Register Bits D8-D13 Definitions	2-14
2-15	Power-Down Modes	2-17
2-16	TLC320AD90C Mixer Functions	2-19

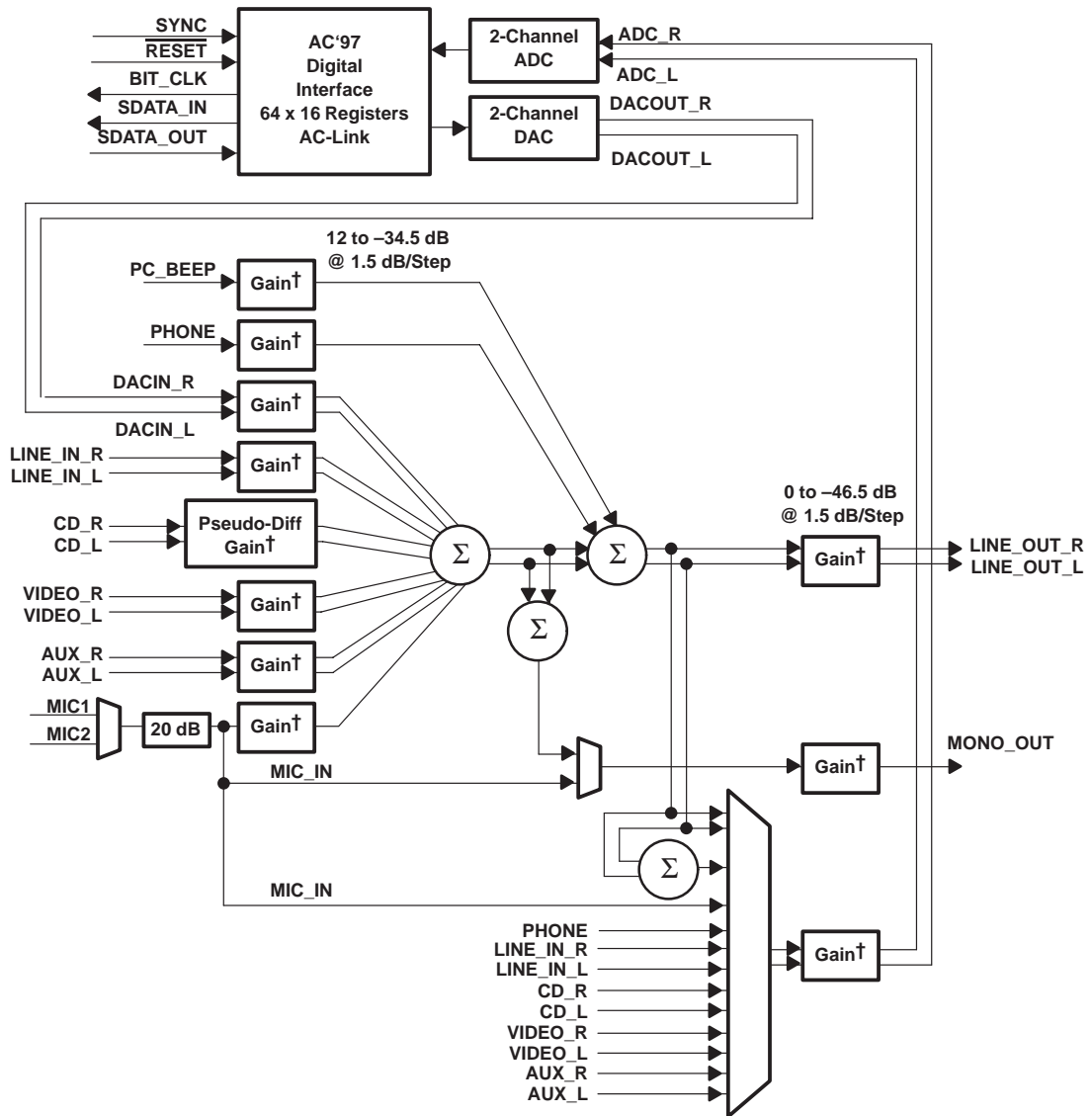
1 Introduction

The TLC320AD90C is designed to be 100% compliant with the audio codec '97 (AC'97) standard specification. The codec is designed to be controlled by a digital controller. The two fixed 48-kHz sample rate DACs support a stereo PCM output channel that contains a mix, determined by the codec controller, of all digital audio sources, including an internal synthesizer, and any other digital sources. The output of these DACs is mixed with additional analog sources and sent to the independently-controlled LINE_OUT output. For a speakerphone, the MONO_OUT output delivers either mic only or a mono mix of sources to a telephony subsystem. The ADC path supports two channels of fixed 48-kHz sample rate inputs. The standard stereo PCM input channel supports the record of any mono or stereo source, or a mix of sources.

1.1 Features

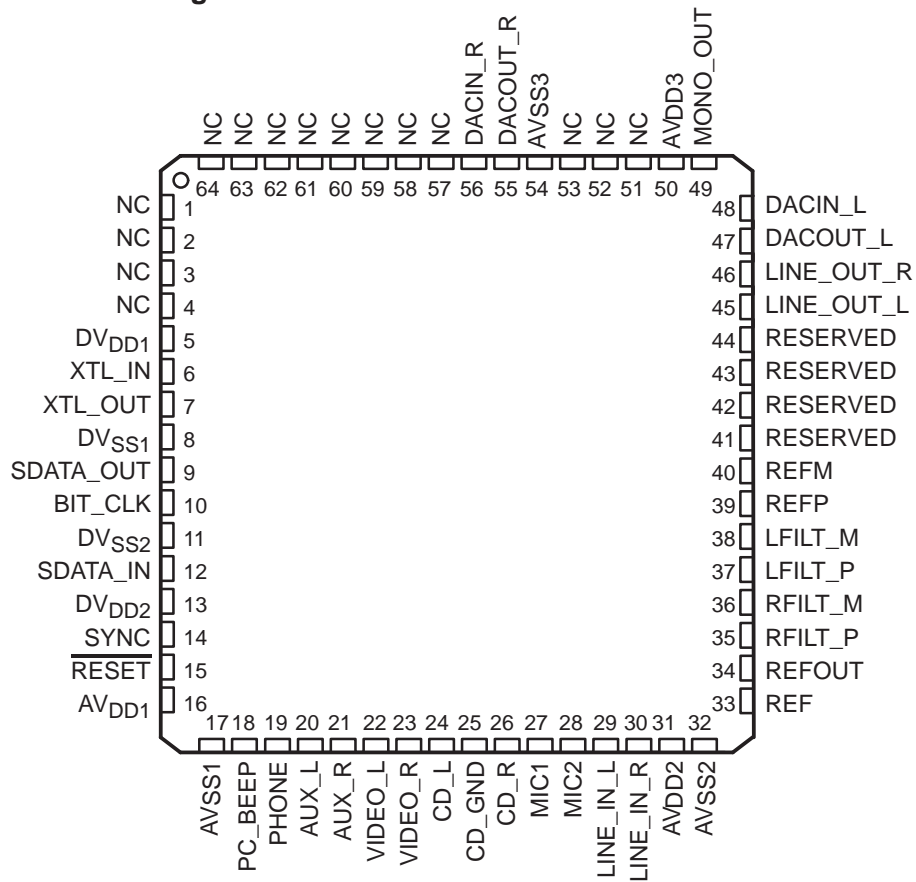
- Compatible with INTEL audio codec '97 specification
- Very high sound quality
- Tone free ADC and DAC in PC environment
- Exceeds many performance parameters of the AC'97 specification
- Serial (AC-Link) interface port
- Standard 64-pin LQFP (TQFP) package
- Full-duplex codec with 16-bit resolution ADC and DAC
- 48-kHz sample rate
- Four analog stereo inputs: LINE_IN, CD, VIDEO, and AUX
- Line level mono inputs for speakerphone and BEEP
- Unique mono mic input allows quick switching from two different sources without pop noises
- Buffered voltage reference output is designed for microphone biasing
- Very high performance CDROM input rejects 5x – standard pseudo-diff design – yielding 65 dB rejection of CDROM servo noises
- Very high PSRR – (55 dB – including very high frequency bands) 5x better than standard – low noise easily obtained at system level
- Very low interchannel crosstalk (<100 dB) preserves stereo fidelity
- High fidelity linear phase FIR digital filter for ADC and DAC
- High fidelity linear phase Bessel DAC filters utilized
- ADC and DAC THD met for full scale (1 VRMS) levels
- Stereo line level output
- Mono output for speakerphone
- Power management support
- Low operating current consumption – typically less than 55 mA total when outputs are driving 10-k Ω loads
- Very low standby current (100 μ A) in power-down mode
- Interfaces to 5-V or 3.3-V digital controller

1.2 Functional Block Diagram



† Gain = Gain, Attenuate, Mute

1.3 Terminal Assignments



1.4 Ordering Information

T _A	PACKAGE
	CHIP CARRIER (PM)
0°C to 70°C	TLC320AD90CPM

1.5 Terminal Functions

TERMINAL		I/O	DESCRIPTION
NAME	NO.		
AUX_L	20	I	Auxiliary input left channel from internal connector. AUX_L is used for upgrade synthesizer or other source.
AUX_R	21	I	Auxiliary input right channel from internal connector. AUX_R is used for upgrade synthesizer or other source.
AVDD1	16	I	Analog 5-V supply voltage
AVDD2	31	I	Analog 5-V supply voltage
AVDD3	50	I	Analog 5-V supply voltage
AVSS1	17	I	Analog ground
AVSS2	32	I	Analog ground
AVSS3	54	I	Analog ground
BIT_CLK	10	O	12.288-MHz serial data clock
CD_GND	25	I	CD audio analog ground (for pseudo-differential inputs) from CDROM.
CD_L	24	I	CD audio left channel from CDROM – pseudo-differential input
CD_R	26	I	CD audio right channel from CDROM – pseudo-differential input
DACIN_L	48	I	DAC input left channel. DACIN_L connects to the programmable gain amplifier input.
DACIN_R	56	I	DAC input right channel. DACIN_R connects to the programmable gain amplifier input.
DACOUT_L	47	O	DAC output left channel. DACOUT_L should be connected to DACIN_L through external dc blocking capacitors.
DACOUT_R	55	O	DAC output right channel. DACOUT_R should be connected to DACIN_R through external dc blocking capacitors.
DVDD1	5	I	Digital 5-V supply voltage
DVDD2	13	I	Digital 5-V or 3.3-V supply voltage
DVSS1	8	I	Digital ground
DVSS2	11	I	Digital ground
LFILT_M	38	O	Differential anti-aliasing filter for ADC left channel
LFILT_P	37	O	Differential anti-aliasing filter for ADC left channel
LINE_IN_L	29	I	Line in left channel. LINE_IN_L connects to line-in jack. Will drive 600Ω load.
LINE_IN_R	30	I	Line in right channel. LINE_IN_R connects to line-in jack. Will drive 600Ω load.
LINE_OUT_L	45	O	Line output left channel to output jack.
LINE_OUT_R	46	O	Line output right channel to output jack.

MIC1	27	I	Desktop (primary) microphone input. MIC1 connects to the microphone jack.
MIC2	28	I	Second microphone input. MIC2 connects to the headset microphone jack.
MONO_OUT	49	O	Mono output. MONO_OUT is generally used to drive a telephony subsystem (and/or speakerphone card). Will drive 600Ω load.
PC_BEEP	18	I	PC speaker beep pass through. PC_BEEP connects to the output of the PC speaker.

1.5 Terminal Functions (Continued)

TERMINAL		I/O	DESCRIPTION
NAME	NO.		
PHONE	19	I	Telephony subsystem speakerphone input (DLP – down line phone)
REF	33	O	Reference voltage
REFM	40	O	Differential voltage reference filter
REFOUT	34	O	Reference voltage. Provides a 5-mA drive to bias microphones.
REFP	39	O	Differential voltage reference filter
RESERVED	41–44		Connect to ground
$\overline{\text{RESET}}$	15	I	Master hardware reset
RFILT_M	36	O	Differential anti-aliasing filter for ADC right channel
RFILT_P	35	O	Differential anti-aliasing filter for ADC right channel
SDATA_IN	12	O	Serial time-division-multiplexed TLC320AD90C output stream
SDATA_OUT	9	I	Serial time-division-multiplexed TLC320AD90C input stream
SYNC	14	I	48-kHz fixed sample sync signal
VIDEO_L	22	I	Video audio left channel. VIDEO_L connects to a TV tuner or video camera (typically an internal connector).
VIDEO_R	23	I	Video audio right channel. VIDEO_R connects to a TV tuner or video camera (typically an internal connector).
XTL_IN	6	I	24.576-MHz crystal
XTL_OUT	7	O	24.576-MHz crystal

2 Functional Description

2.1 Analog Input/Output Ports

2.1.1 Analog Outputs

The TLC320AD90C mixer generates the following two distinct audio outputs:

- A stereo mix of all sources for output to the speakers, headset, and LINE_OUT output
- A mono, mic only, or mix of all sources (except PHONE and PC_BEEP) for speakerphone output (MONO_OUT)

2.1.2 Analog Inputs

The TLC320AD90C supports all analog audio inputs required by the audio codec '97 (AC'97) specification. Specifically, the device supports the playback and record of all digital and analog sources likely to be present in PCs. These sources include the following:

- System audio: digital PCM input and output for business, games, and multimedia
- CD/DVD: analog CD/DVD-ROM redbook audio with internal connections to codec mixer
- Mono microphone: choice of desktop or headset mic with programmable boost and gain
- Speakerphone: use of system mic and speakers for telephony, DSVD, and video conferencing
- Stereo line in: analog external line level source from consumer audio, video camera, etc
- Video: TV tuner or video capture card with internal connections to codec mixer
- Aux/synth: analog FM or wavetable synthesizer or other internal source

The analog inputs connect to a stereo analog mixer as well as a stereo multiplexer. The mixer is used for playback or analog pass-through. The multiplexer is used during record.

The multiplexer offers the capability to record any of the audio sources or the outgoing mix of all sources. The multiplexer implementation is more efficient than an independent mix and offers simple monitoring when a mix is recorded: what you hear is what you get (WYHIWYG). The mono and stereo mix also provides excellent echo cancellation reference signals.

The TLC320AD90C supports the following full range of input options (the audio driver may maintain a consistent record input level for each multiplexer option):

- Any mono or stereo source
- Mono or stereo mix of all sources
- Two-channel input with mono output reference (mic and stereo mix for stereo echo cancellation)

2.2 Digital Interface

The TLC320AD90C, per the AC'97 specification, incorporates a 5-wire serial digital interface to a digital controller. The AC-Link specifies a bidirectional, fixed rate, serial PCM digital stream. The interface handles multiple input and output audio streams as well as control register accesses by employing a time division multiplexed (TDM) protocol.

The AC-Link architecture divides each audio frame into 12 outgoing and 12 incoming data streams, each with 20-bit sample resolution.

The TLC320AD90C data streams, per the AC'97 specification, are the following:

- PCM playback has two output slots with a two channel composite PCM output stream
- PCM record has two input slots with a two channel composite PCM input stream
- Control has two output slots with a Control register write port
- Status has two input slots with a Control register read port
- Additional data streams are defined in the AC'97 specification but their functionality are not implemented in the TLC320AD90C

The AC'97 audio frame is shown in Figure 2-1.

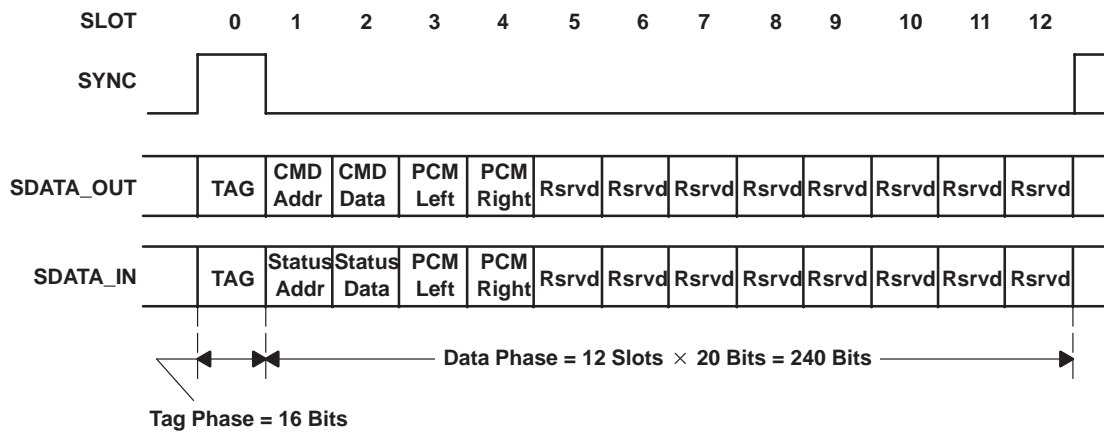


Figure 2-1. AC-Link Bidirectional Audio Frame (As Implemented)

2.2.1 AC-Link Signal Definitions

The AC-Link signals are shown in Figure 2-2.

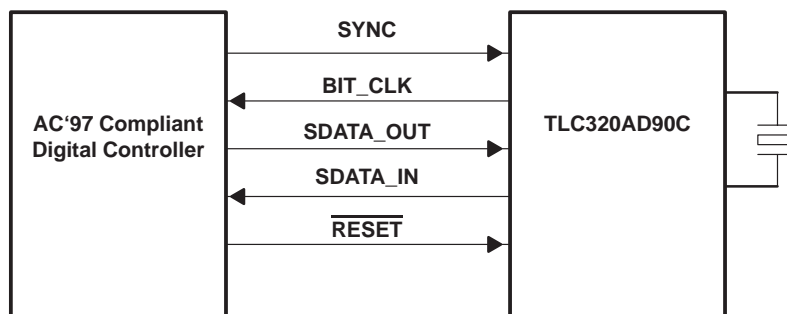


Figure 2-2. AC-Link Signals

The AC-Link signal definitions are listed in Table 2–1.

Table 2–1. AC-Link Signal Definitions

SIGNAL	SOURCE	DESCRIPTION
SYNC	Controller	Marks the beginning of each frame. Sourced by the controller. Occurs at a fixed rate of 48 kHz unless in power-down mode. Synchronous to BIT_CLK. Width of 16 bits. Defines the TAG phase.
BIT_CLK	Codec	Sourced by TLC320AD90C. Fixed rate of 12.288 MHz. Data is transmitted on every rising edge. Data is captured on every falling edge.
SDATA_OUT	Controller	Serial bit stream sent from the controller to the codec. Data and control are transmitted by the controller.
SDATA_IN	Codec	Serial bit stream sent from the codec to the controller. Data and control are transmitted by the TLC320AD90C.
$\overline{\text{RESET}}$	Controller	Reset signal used to bring the TLC320AD90C out of power-down mode. Defines the cold TLC320AD90C reset.

2.2.2 Protocol

The TLC320AD90C protocol includes the following:

- The AC-Link is a TDM serial interface consisting of 256 bits/frame
- Each frame is divided into two sections: A TAG phase of 16 bits, and a DATA phase of 240 bits
- The DATA phase is divided into 12 time slots with each time slot consisting of 20 bits
- Data is bidirectional with SDATA_OUT transmitted by the controller, and SDATA_IN transmitted by the codec

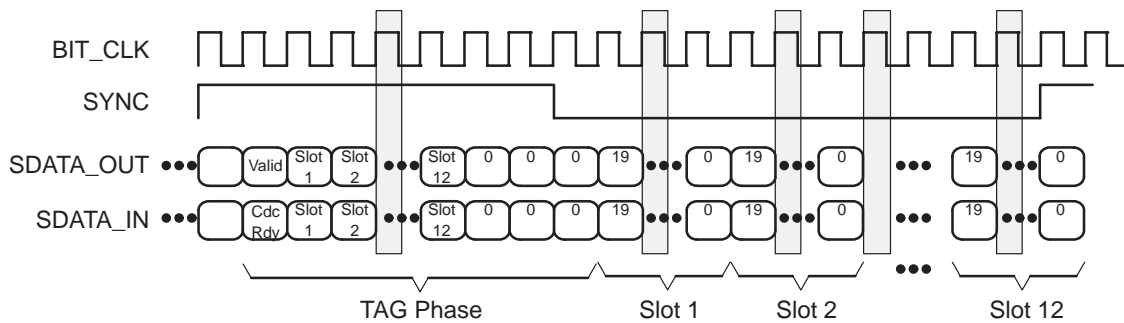


Figure 2–3. AC-Link Protocol

2.2.2.1 Zero-Padding

The TLC320AD90C uses zero-padding which is defined as the following:

- Reserved time-slots are filled with zeroes
- Unused bits within a time-slot must be filled with zeroes (e.g., 16-bit converter in a 20-bit time slot). This operation must be performed by the source (i.e., the controller for SDATA_OUT, the TLC320AD90C for SDATA_IN).
- Time slots tagged as invalid must be filled with zeroes

2.2.2.2 SYNC

The TLC320AD90C SYNC signal includes the following characteristics:

- SYNC is driven by the controller
- SYNC is derived by dividing down the BIT_CLK signal (BIT_CLK is an input to the controller)
- SYNC is high for 16 BIT_CLKs at the beginning of each frame. These 16 BIT_CLKs (bits) define the TAG phase. The TAG phase defines the beginning of a frame.
- The TLC320AD90C synchronizes data conversion with the rising edge of SYNC
- SYNC remains low for the next 240 BIT_CLKs. These 240 BIT_CLKs (bits) define the DATA phase.
- SYNC is sampled by TLC320AD90C at the falling edge of BIT_CLK
- SYNC transition edges are on the rising edge of BIT_CLK
- The controller must hold SYNC low during a TLC320AD90C power-down halted state

2.2.2.3 BIT_CLK

The TLC320AD90C BIT_CLK signal includes the following characteristics:

- BIT_CLK is fixed at 12.288 MHz ($256 \times$ sampling rate). The sampling rate is fixed at 48 kHz.
- BIT_CLK is sourced by the TLC320AD90C
- BIT_CLK goes low and remains low when a write to register 26h with PR4 is detected (power-down state)
- BIT_CLK becomes active from a power-down state in response to a cold or warm TLC320AD90C reset condition

2.2.2.4 SDATA_OUT

The TLC320AD90C SDATA_OUT signal includes the following characteristics:

- SDATA_OUT is driven by the controller
- SDATA_OUT transitions on the rising edge of BIT_CLK
- SDATA_OUT is captured by the TLC320AD90C on the falling edge of BIT_CLK
- The controller must hold SDATA_OUT low during an TLC320AD90C power-down halted state

2.2.2.5 SDATA_IN

The TLC320AD90C SDATA_IN signal includes the following characteristics:

- SDATA_IN is driven by the TLC320AD90C
- SDATA_IN transitions on the rising edge of BIT_CLK
- SDATA_IN is captured by the controller on the falling edge of BIT_CLK
- SDATA_IN goes low and remains low when a write to register 26h with PR4 is detected (power-down state)
- SDATA_IN becomes active from a power-down state in response to a cold or warm TLC320AD90C reset condition

2.2.3 Frame Contents

The SDATA_OUT frame contents are listed in Table 2–2.

Table 2–2. SDATA_OUT Frame Contents (Driven by Audio Controller)

SLOT	SLOT NAME	BIT POSITION	NAME	DESCRIPTION
0	TAG	15	Valid Frame	0: Indicates no valid data is in this frame 1: There is at least one TDM slot containing valid data in the frame.
		14	Slot 1 Valid	0: Indicates no data is available in the first time slot of the data phase. Slot one must be zero-padded. 1: Valid data is available in the first time slot.
		13–3	Slot x Valid	0: No valid data is in slot x of the data phase. The corresponding slot must be zero-padded. 1: Valid data is in slot x
		2–0	Zero Pad	Reserved. Must be zeroes.
1	Command Address	19	Read/Write	0: Write to the addressed register 1: Read from the addressed register
		18–12	Register Index	These seven bits are used to access the control registers. Only the even numbers are used. A total of 64 registers are defined. Odd numbered register accesses map to the preceding even boundary.
		11–0	Zero Pad	Reserved. Must be zeroes.
2	Command Data	19–4	Register Data	If the current command operation is a write (see bit 19 of slot one) then these bits contain the data to be written. These bits must be zero-padded if the current operation is a read.
		3–0	Zero Pad	Reserved. Must be zeroes.
3	PCM Left Playback	19–4	PCM Data	16-bit audio data. If the resolution is less than 16 bits, then the data must be right-justified and the LSBs must be zero-padded.
		3–0	Zero Pad	These bits must be zeroes.
4	PCM Right Playback	19–4	PCM Data	16-bit audio data. If the resolution is less than 16 bits, then the data must be right-justified and the LSBs must be zero-padded.
		3–0	Zero Pad	These bits must be zeroes.
5–12	Reserved		Zero Pad	Reserved. These bits must be zeroes. Note that slot five is the optional modem line codec.

The SDATA_IN frame contents are listed in Table 2–3.

Table 2–3. SDATA_IN Frame Contents

SLOT	SLOT NAME	BIT POSITION	NAME	DESCRIPTION
0	TAG	15	Codec Ready	0: Indicates the TLC320AD90C codec is not ready. 1: Indicates the TLC320AD90C control and status registers are available and the AC-Link is operational. The audio controller can then probe further to determine when other sections become available.
		14	Slot 1 Valid	0: Indicates no data is available in the first time slot of the data phase. Slot one must be zero-padded. 1: Valid data is available in the first time slot if the codec is ready.
		13–3	Slot x Valid	0: No valid data is in slot x of the data phase. The corresponding slot must be zero-padded. 1: Valid data is in slot x if the codec is ready.
		2–0	Zero Pad	Reserved. Must be zeroes.
1	Status Address	19	Zero Pad	Reserved. Must be zero.
		18–12	Register Index	These seven bits are used to echo the control register address. The data appears in the next slot (slot two). These bits must be zero-padded if this slot is flagged invalid during the TAG phase.
		11–0	Zero Pad	Reserved. Must be zeroes.
2	Status Data	19–4	Register Data	Contents of the register addressed by slot one (status address). These bits must be zero-padded if this slot is flagged invalid during the TAG phase.
		3–0	Zero Pad	These bits are zeroes.
3	PCM Left Record	19–4	PCM Data	16-bit audio data.
		3–0	Zero Pad	These bits must be zeroes.
4	PCM Right Record	19–4	PCM Data	16-bit audio data.
		3–0	Zero Pad	These bits are zeroes.
5–12	Reserved		Zero Pad	Reserved. These bits must be zeroes. Note that slot five is the optional modem line codec, and slot six is the optional microphone ADC record data.

2.2.4 AC-Link Low-Power Mode

The TLC320AD90C implementation of the AC-Link can be placed in a low-power mode (see Section 2.7, *Power-Down Management*). When the TLC320AD90C Power Down register (26h) is programmed to the appropriate value, both BIT_CLK and SDATA_IN are brought to and held at low-voltage logic levels.

As shown in Figure 2–4, BIT_CLK and SDATA_IN are transmitted low immediately following the decode of the write to the Power Down Register (26h) with PR4. When the digital controller driver is at the point where it is ready to program the TLC320AD90C into its low-power mode, slots one and two are assumed to be the only valid stream in the audio output frame. (At this point, all sources of audio input are assumed to have also been neutralized.)

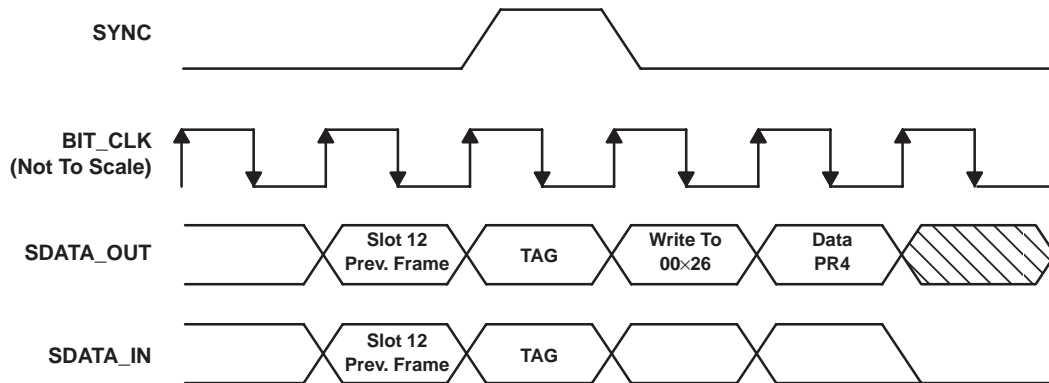


Figure 2–4. TLC320AD90C Power-Down Mode Timing

The digital controller must also drive SYNC and SDATA_OUT low after programming the TLC320AD90C to this low-power halted mode.

Once the TLC320AD90C has been instructed to halt BIT_CLK, a special wake-up protocol must be used to bring the AC-Link to the active mode since normal audio output and input frames cannot be communicated in the absence of BIT_CLK.

The AC-Link can be made active again by means of a warm reset or a cold reset. See Section 2.5, *Resetting the TLC320AD90C* for details on the procedure. In summary, a warm reset is accomplished by asserting SYNC in the absence of BIT_CLK. The TLC320AD90C responds according to the protocol. A warm reset retains the values programmed into the registers. A cold reset is accomplished by asserting RESET. Again, the TLC320AD90C responds according to the protocol. A cold reset sets all register values to their default values. Note that for both cases of a reset, the signals RESET and SYNC are treated as asynchronous inputs.

2.3 Software Interface

The register indexes and usage are shown in Table 2–4. All registers not shown are assumed to be reserved.

Table 2–4. TLC320AD90C Register Definitions

INDEX	NAME	D15	D14	D13	D12	D11	D10	D9	D8	D7	D6	D5	D4	D3	D2	D1	D0	DEFAULT
00h	Reset	0	0	0	0	0	0	0	0	0	0	0	0	0	0	0	0	0000h
02h	Play Master Volume Stereo	Mute	0	ML5‡	ML4	ML3	ML2	ML1	ML0	0	0	MR5‡	MR4	MR3	MR2	MR1	MR0	8000h
04h†	Headphone Volume	0	0	0	0	0	0	0	0	0	0	0	0	0	0	0	0	0000h
06h	Play Master Volume Mono	Mute	0	0	0	0	0	0	0	0	0	MM5‡	MM4	MM3	MM2	MM1	MM0	8000h
08h†	Master Tone (not used)	0	0	0	0	0	0	0	0	0	0	0	0	0	0	0	0	0000h
0Ah	PC_BEEP Volume	Mute	0	0	0	0	0	0	0	0	0	0	PV3	PV2	PV1	PV0	0	0000h
0Ch	Phone Volume	Mute	0	0	0	0	0	0	0	0	0	GN5‡	GN4	GN3	GN2	GN1	GN0	8008h
0Eh	Mic Volume	Mute	0	0	0	0	0	0	0	0	20dB	GN5‡	GN4	GN3	GN2	GN1	GN0	8008h
10h	Line In Volume	Mute	0	0	GL4	GL3	GL2	GL1	GL0	0	0	0	GR4	GR3	GR2	GR1	GR0	8808h
12h	CD Volume	Mute	0	0	GL4	GL3	GL2	GL1	GL0	0	0	0	GR4	GR3	GR2	GR1	GR0	8808h
14h	Video Volume	Mute	0	0	GL4	GL3	GL2	GL1	GL0	0	0	0	GR4	GR3	GR2	GR1	GR0	8808h

16h	Aux Volume	Mute	0	0	GL4	GL3	GL2	GL1	GL0	0	0	0	GR4	GR3	GR2	GR1	GR0	8808h
18h	PCM Out Volume	Mute	0	0	GL4	GL3	GL2	GL1	GL0	0	0	0	GR4	GR3	GR2	GR1	GR0	8808h

† Optional AC'97 registers whose functionality are not implemented on the TLC320AD90C. These registers can be written to, but reads always return zeroes.

‡ Special function volume settings. If bit is set, then the 5 volume bits implemented are set to all ones.

NOTE: All registers and all bits in all registers must have read back capabilities (be readable) to facilitate testing.

Table 2-4. TLC320AD90C Register Definitions (continued)

INDEX	NAME	D15	D14	D13	D12	D11	D10	D9	D8	D7	D6	D5	D4	D3	D2	D1	D0	DEFAULT
1Ah	Record Select Control	0	0	0	0	0	SL2	SL1	SL0	0	0	0	0	0	SR2	SR1	SR0	0000h
1Ch	Record Gain	Mute	0	0	0	GL3	GL2	GL1	GL0	0	0	0	0	GR3	GR2	GR1	GR0	8000h
1Eh†	Record Gain Mic	0	0	0	0	0	0	0	0	0	0	0	0	0	0	0	0	0000h
20h	General Purpose	0	0	0	0	0	0	MIX	MS	LPBK	0	0	0	0	0	0	0	0000h
22h†	3D Control	0	0	0	0	0	0	0	0	0	0	0	0	0	0	0	0	0000h
24h†	Modem Rate (Not Used)	0	0	0	0	0	0	0	0	0	0	0	0	0	0	0	0	0000h
26h	Power-Down Control/Status	0	0	PR5	PR4	PR3	PR2	PR1	PR0	0	0	0	0	REF	ANL	DAC	ADC	na
28h-59h	Reserved	0	0	0	0	0	0	0	0	0	0	0	0	0	0	0	0	0

5Ah–7Ah	Vendor Reserved	0	0	0	0	0	0	0	0	0	0	0	0	0	0	0	0	0000h
7Ch	Vendor ID1	F7	F6	F5	F4	F3	F2	F1	F0	S7	S6	S5	S4	S3	S2	S1	S0	na
7Eh	Vendor ID2	T7	T6	T5	T4	T3	T2	T1	T0	REV7	REV6	REV5	REV4	REV3	REV2	REV1	REV0	na

† Optional AC'97 registers whose functionality are not implemented on the TLC320AD90C. These registers can be written to, but reads always return zeroes.

‡ Special function volume settings. If bit is set, then the 5 volume bits implemented are set to all ones.

NOTE: All registers and all bits in all registers must have read back capabilities (be readable) to facilitate testing.

2.3.1 Reset Register (Index 00h)

A write of any value to the Reset register performs a register reset, which causes all of the registers to revert to their default values. A read of this register returns the ID code of the TLC320AD90C and the type of 3D enhancement, if installed.

Both DACs operate at 16-bit resolution, and both ADCs operate at 16-bit resolution.

The ID decodes the capabilities of the TLC320AD90C based on the definitions listed in Table 2–5.

Table 2–5. Reset Register ID Bit Definitions

ALL BITS = 0	FUNCTION
ID0	Dedicated mic PCM channel
ID1	Modem line codec support
ID2	Bass and treble control
ID3	Simulated stereo (mono to stereo)
ID4	Headphone out support
ID5	Loudness (bass boost) support
ID6	18-bit DAC resolution
ID7	20-bit DAC resolution
ID8	18-bit ADC resolution
ID9	20-bit ADC resolution

2.3.2 Play Master Volume Stereo and Mono Registers (Index 02h and 06h)

The Play Master Volume registers manage output signal volumes. Register 02h controls the stereo master volume (both right and left channels). Register 06h controls the mono volume output. Each step corresponds to 1.5 dB. ML5 through ML0 is for the left channel level. MR5 through MR0 is for the right channel level. MM5 through MM0 is for the mono out channel.

The MSB is the mute bit and is supported in the TLC320AD90C. When this bit is set to 1, the level for that channel is set at maximum attenuation.

The default value of these registers is 8000h (1000 0000 0000 0000) which corresponds to 0-dB attenuation with mute on. The Play Master Volume register definitions are listed in Table 2–6.

Table 2–6. Play Master Volume Register Definitions

MUTE	Mx5 – Mx0	FUNCTION
0	00 0000	0-dB Attenuation

	01 1111	46.5-dB Attenuation
1	xx xxxx	Maximum attenuation (mute)

2.3.3 PC_BEEP Volume Register (Index 0Ah)

The PC_BEEP Volume register controls the level of the PC_BEEP input. Each step corresponds to 3 dB of attenuation. The MSB of the register is the mute bit. When this bit is set to 1, the level for the channel is

set at maximum attenuation.

NOTE:

Power-on self-test (POST) codes need to be heard by the user when a hardware problem with the PC exists, even when the TLC320AD90C is in a reset state. Therefore, PC_BEEP is routed to the left and right line outputs (a high-impedance path to the outputs is used with no attenuation).

The default value of this register is 0000h which corresponds to 0-dB attenuation with mute off. The PC_BEEP register definitions are listed in Table 2–7.

Table 2–7. PC_BEEP Register Definitions

MUTE	PV3 – PV0	FUNCTION
0	0000	0-dB Attenuation

	1111	45-dB Attenuation
1	xxxx	Maximum attenuation (mute)

2.3.4 Analog Mixer Input Gain Registers (Index 0Ch – 18h)

The Analog Mixer Input Gain registers (Phone Volume, Mic Volume, Line In Volume, CD Volume, Video Volume, Aux Volume, PCM Out Volume) control the gain and attenuation for each of the analog inputs except PC_BEEP. Each step corresponds to approximately 1.5 dB. The MSB of each register is the mute bit. When this bit is set to 1, the level for that channel is set at maximum attenuation.

Register 0Eh (Mic Volume register) has an extra bit for a 20-dB boost. When bit D6 is set to 1, the 20-dB boost is on. The default value of this register is 8008h which corresponds to 0-dB gain with mute on.

The default value for the mono (Phone Volume, Mic Volume) registers is 8008h which corresponds to 0-dB gain with mute on. The default value for the stereo registers is 8808h which corresponds to 0-dB gain with mute on. The Analog Mixer Input Gain register definitions are listed in Table 2–8.

Table 2–8. Analog Mixer Input Gain Register Definitions

MUTE	Gx4 – Gx0	FUNCTION
0	0 0000	12-dB Gain

	0 1000	0-dB Gain

	1 1111	–34.5-dB Gain
1	x xxxx	Maximum attenuation (mute)

2.3.5 Record Select Control Register (Index 1Ah)

The Record Select Control registers are used to select the record source, independently, for the right and left channels. See Tables 2–9 and 2–10 for the legend.

The default value of this register is 0000h which corresponds to MIC_IN. The Record Select Control register definitions are listed in Tables 2–9 and 2–10.

Table 2–9. Right Record Select Control Register Definitions

SR2 – SR0	RIGHT RECORD SOURCE
000	MIC_IN
001	CD_R
010	VIDEO_R
011	AUX_R
100	LINE_IN_R
101	Stereo Mix (R)
110	Mono Mix (R)
111	PHONE

Table 2–10. Left Record Select Control Register Definitions

SL2 – SL0	LEFT RECORD SOURCE
000	MIC_IN
001	CD_L
010	VIDEO_IN_L
011	AUX_L
100	LINE_IN_L
101	Stereo Mix (L)
110	Mono Mix (L)
111	PHONE

2.3.6 Record Gain Register (Index 1Ch)

The Record Gain register is for the stereo input. Each step corresponds to 1.5 dB with 22.5 dB corresponding to 0F0Fh. The MSB of the register is the mute bit. When this bit is set to 1, the level for that channel is set to maximum attenuation.

The default value of this register is 8000h which represents 0-dB gain with mute on. The Record Gain register definitions are listed in Tables 2–11.

Table 2–11. Record Gain Register Definitions

MUTE	Gx3 – Gx0	FUNCTION
0	1111	22.5-dB Gain

	0000	0-dB Gain
1	xxxx	Maximum attenuation (mute)

2.3.7 General Purpose Register (Index 20h)

The General Purpose register is used to control several miscellaneous functions of the TLC320AD90C: microphone output select, microphone select, and loopback.

This register should be read before writing to generate a mask for only the bit(s) that need to be changed.

The default value of this register is 0000h. The General Purpose register definitions are listed in Table 2–12.

Table 2–12. General Purpose Register Definitions

BIT	FUNCTION
MIX	Mono select. 0 = Mix, 1 = Mic
MS	Mic select. 0 = MIC1, 1 = MIC2
LPBK	ADC/DAC loopback mode. 0: Off 1: Enables loopback of the ADC output to the DAC input without involving the AC-Link thus allowing for full system performance measurements.

2.3.8 Power-Down Control/Status Register (Index 26h)

The Power-Down Control/Status register is a read/write register used to program power-down states and monitor subsystem readiness. The lower half of this register is read-only status with a one indicating that the subsection is ready. Ready is defined as the subsection is able to perform in its nominal state. When this register is written, the bit values received on the AC-Link have no effect on read-only bits 0–7.

When the AC-Link Codec Ready indicator bit (SDATA_IN, slot 0, bit 15) is a one, the AC-Link and TLC320AD90C control and status registers are in a fully operational state. The digital controller must further probe this Power-Down Control/Status register to determine which subsections, if any, are ready. The Power-Down Control/Status register bits D0–D3 definitions are listed in Table 2–13.

Table 2–13. Power-Down Control/Status Register Bits D0–D3 Definitions

BIT	FUNCTION
REF	V_{ref} is up to nominal level
ANL	Analog mixers, etc. ready
DAC	DAC section ready
ADC	ADC section ready

The power-down modes include the following:

- The first three bits (PR0–PR2) are to be used individually rather than in combination with each other
- The last bit, PR3 can be used with PR2 or by itself
- PR0 and PR1 control the PCM ADCs and DACs only

The Power-Down Control/Status register bits D8–D13 definitions are listed in Table 2–14.

Table 2–14. Power-Down Control/Status Register Bits D8–D13 Definitions

BIT	FUNCTION (SEE NOTE 1)
PR0	PCM in ADCs and input mux power down
PR1	PCM out DACs power down
PR2	Analog mixer power down (V_{ref} on)
PR3	Analog mixer power down (V_{ref} off)
PR4	Digital interface (AC-Link) power down (external clock off)
PR5	Internal clock disabled

NOTE 1: PR6 and PR7 are specified in the AC'97 specification, but are not implemented in TLC320AD90C. These bits are read back as zeroes.

2.3.9 Reserved Registers (Index 28h – 59h)

These registers are reserved. Write operations should not be performed to these registers.

2.3.10 Vendor Reserved Registers (Index 5Ah – 7Ah)

The Vendor Reserved registers are reserved for future use and are vendor specific. The TLC320AD90C register positions are allocated in the architecture but all bits are permanently set to zero.

A write operation to any of the Vendor Reserved registers has no effect. A read operation of any of these registers, except for index 5Ah, produces all zero values.

2.3.11 Vendor ID Registers (Index 7Ch – 7Eh)

The Vendor ID registers are for specific vendor identification, if so desired. The ID method is the Microsoft Plug and Play™ vendor ID code with F7 – F0 containing the first character of that ID, S7 – S0 containing the second ID character, and T7 – T0 containing the third ID character. These three characters are ASCII encoded. The REV7 – REV0 field is for the vendor revision number.

Register 7Ch is hard coded with 5458h and register 7Eh is hard coded with 4E20h. Only these values are read from these registers.

2.4 Clocking

The TLC320AD90C codec derives its clock from an external 24.576-MHz crystal. The codec drives a buffered and divided down (1/2) clock to the digital controller over the AC-Link on BIT_CLK. The frequency of this clock is 12.288 MHz. (An external oscillator can be used; however, a crystal may yield more stable operation.) See Figure 2–5 and Figure 2–6 for the clock connection options.

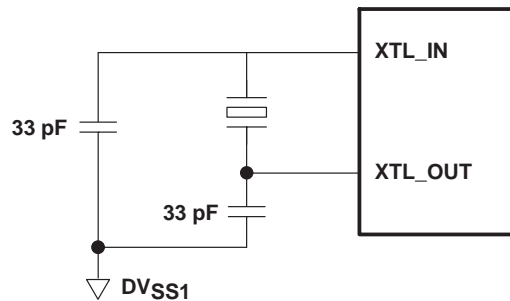


Figure 2–5. Crystal Configuration

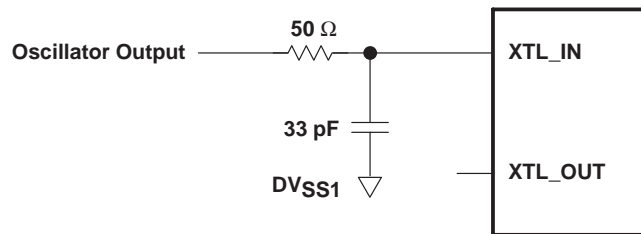


Figure 2–6. External Oscillator Configuration

If an external oscillator is used, it must be filtered with a 33 pF capacitor and a 50 Ω resistor.

Clock jitter at the data converters (DACs and ADCs) is a fundamental impediment to high-quality performance. The internally generated clock provides the TLC320AD90C with a clean clock that is independent of the physical proximity of the digital controller.

The beginning of all audio sample packets or audio frames transferred over the AC-Link are synchronized to the rising edge of the SYNC signal. SYNC is driven by the controller. The controller receives the BIT_CLK input and generates SYNC by dividing BIT_CLK by 256 and applying conditioning to tailor the duty cycle. The result is a 48-kHz sample rate SYNC signal whose period defines an audio frame. Data is transferred out on every rising edge of BIT_CLK and subsequently sampled on the receiving side of the AC-Link on each immediately falling edge of BIT_CLK.

The audio data stream cannot be paused in record or playback since the codec does not contain data buffering capabilities.

2.5 Resetting the TLC320AD90C

The three types of TLC320AD90C resets include the following:

- A cold reset where all TLC320AD90C logic (registers included) is initialized to the default state. This reset is accomplished by asserting **RESET**.
- A warm reset where the contents of the TLC320AD90C register set are left unaltered. This reset is accomplished by asserting SYNC during an AC-Link power-down state.
- A register reset which only initializes the TLC320AD90C registers to their default states. See Section 2.3, *Software Interface*, register 0h.

After signaling a reset to the TLC320AD90C, the digital controller should not attempt to play or capture audio data until it has sampled a codec ready indication from the TLC320AD90C.

2.5.1 Cold Reset

A cold reset is achieved by asserting **RESET** for 1 μ s. By driving **RESET** low, BIT_CLK and SDATA_OUT are activated, or reactivated, and all TLC320AD90C control registers are initialized to default power-on reset values.

RESET is an asynchronous input.

2.5.2 Warm Reset

The AC-Link can be put in a low-power consumption state (see Section 2.3, *Software Interface*). In this state, all signals become inactive including BIT_CLK, and SYNC. A warm TLC320AD90C reset reactivates the AC-Link without altering the current TLC320AD90C register values. A warm reset is signaled by driving SYNC high for a minimum of 1 μ s in the absence of BIT_CLK.

Within normal audio frames, SYNC is a synchronous TLC320AD90C input. However, in the absence of BIT_CLK, SYNC is treated as an asynchronous input used in the generation of a warm reset to the TLC320AD90C.

The TLC320AD90C does not respond with the activation of BIT_CLK until SYNC has been sampled low again by the TLC320AD90C. This precludes the false detection of a new audio frame.

2.5.3 Reset From Test Mode

Once either of the two test modes have been entered, the TLC320AD90C must be issued another reset with all AC-Link signals low to return to the normal operating mode.

2.6 Microphone Input Programmable Gain Amplifier

The TLC320AD90C is designed to allow most common microphones to be connected to it without the use of external preamplifiers. As shown in Figure 2–7, the microphone input multiplexer is followed by a buffer amplifier with 100-k Ω input impedance. This configuration allows the value of the input coupling capacitors to be kept small while maintaining acceptable low frequency response characteristics.

A bias voltage through two 100-k Ω resistors is maintained on both MIC1 and MIC2 to allow for rapid switching between the two microphones.

As shown in Figure 2–7, the reference output is designed to provide bias current for two microphones.

Figure 2–7 shows the connection of two electret microphones to the TLC320AD90C codec.

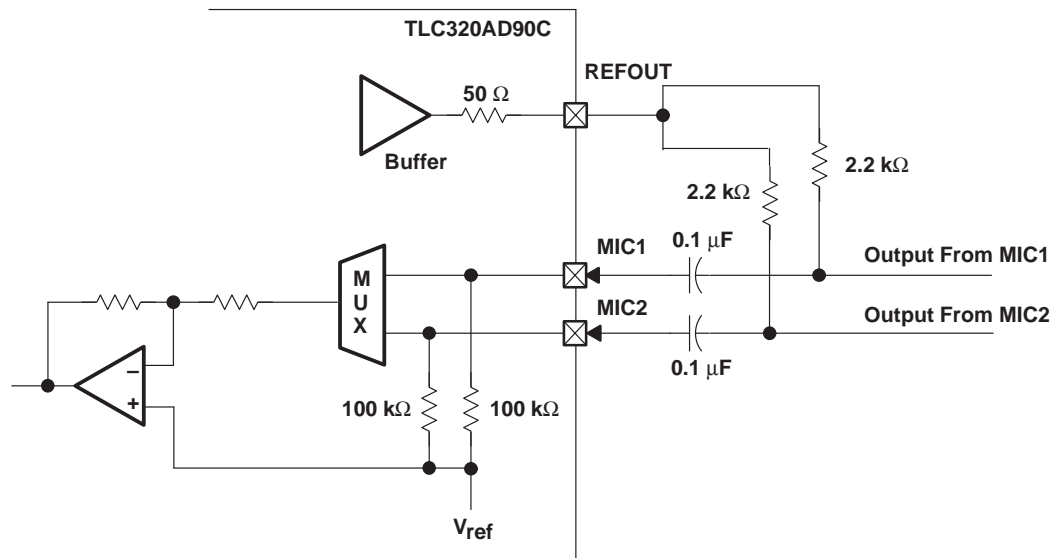


Figure 2–7. Microphone Programmable Gain Amplifier With Two Electret Microphones

2.7 Power-Down Management

The TLC320AD90C is capable of operating at reduced power when no activity is required. The state of power down is controlled by the Power Down register (Index 26h). There are seven commands of separate power down with the addition of modem codec. The TLC320AD90C is fully static and if the clock is stopped, the register values are not lost. Table 2–15 lists the different power-down modes.

Table 2–15. Power-Down Modes

BITS	FUNCTION
PR0	PCM in ADCs and input MUX power down
PR1	PCM out DACs power down
PR2	Analog mixer power down (V_{ref} on)
PR3	Analog mixer power down (V_{ref} off)
PR4	Digital interface (AC'97) power down (external clock off)
PR5	Internal clock disabled

Figure 2–8 illustrates one example procedure for a complete power down of the TLC320AD90C. From normal operation, sequential writes to the General Purpose register are performed to power down the TLC320AD90C one section at a time. After all of the other sections have been shut down, a final write (of PR4) can be executed to shut down the TLC320AD90C digital interface (AC-Link). The device remains in sleep mode with all registers holding their static values. To wake up the TLC320AD90C, the digital controller sends a pulse on SYNC which issues a warm reset. This operation restarts the TLC320AD90C digital interface (resets PR4 to zero). The TLC320AD90C can also be awakened with a cold reset. A cold reset causes a loss of the register values since a cold reset sets the registers back to their default states. When a section is powered back on, the Power Down register (index 26h) should be read to verify that the section is ready (i.e., stable) before any operation that requires the section is attempted.

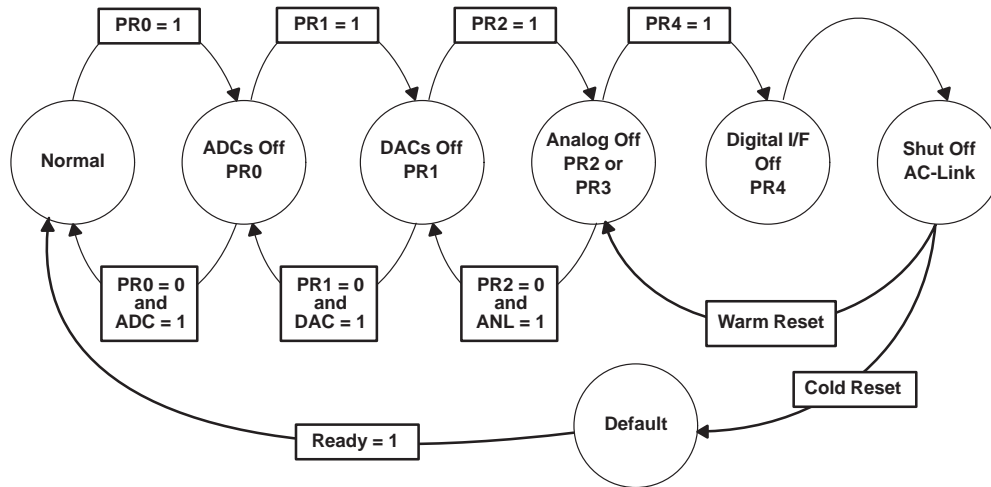


Figure 2–8. TLC320AD90C Power-Down/ Power-Up Flow Example

Figure 2–9 illustrates an example procedure where all of the mixers are operational with the static volume settings contained in their associated registers. This procedure is used when a CD is played (or external LINE_IN source) through the TLC320AD90C to the speakers but most of the system is in low-power mode. This procedure follows the previous procedure except that the analog mixer is never shut down.

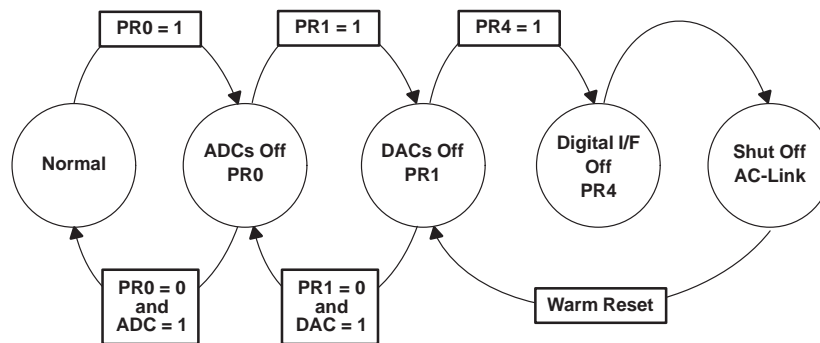


Figure 2–9. TLC320AD90C Power-Down/Power-Up Flow Example With Analog Still Alive

2.8 Mixer Functions

The TLC320AD90C mixer functions are listed in Table 2–16.

Table 2–16. TLC320AD90C Mixer Functions

SOURCE	SOURCE DESCRIPTION	CONNECTION
PC_BEEP	PC_BEEP pass through	From PC beeper output
PHONE	Speakerphone	From telephony subsystem
MIC1	Desktop microphone	From microphone jack
MIC2	Headset microphone	From headset microphone jack
LINE_IN	External audio source	From line-in jack
CD	Audio from CD-ROM drive	CD audio left channel
VIDEO	Audio from TV tuner or video camera	Cable from TV or video capture card
AUX	Upgrade synth or other source	Internal connector
SDATA_OUT	Digital audio output from digital controller	AC-Link
Mix out	Mix of all sources	TLC320AD90C internal connection
LINE_OUT	Stereo mix of all sources	To output jack
MONO_OUT	Mic or mix for speakerphone	To telephony subsystem
SDATA_IN	Digital audio input to digital controller	AC-Link

3 Specifications

3.1 Absolute Maximum Ratings Over Operating Free-Air Temperature Range (unless otherwise noted)[†]

Supply voltage range, AV_{DD} (see Note 1)	−0.3 V to 6 V
Supply voltage range, DV_{DD} (see Note 1)	−0.3 V to 6 V
Analog Input voltage (see Note 1)	−0.3 V to $AV_{DD} + 0.3$ V
Digital Input voltage (see Note 1)	−0.3 V to $DV_{DD} + 0.3$ V
Operating free-air temperature range, T_A	0°C to 70°C
Storage temperature range, T_{stg}	−65°C to 150°C
Case temperature for 10 seconds	70°C
Lead temperature from case for 10 seconds	70°C
ESD tolerance (see Note 2)	2000 V

[†] Stresses beyond those listed under “absolute maximum ratings” may cause permanent damage to the device. These are stress ratings only and functional operation of the device at these or any other conditions beyond those indicated under “recommended operating conditions” is not implied. Exposure to absolute-maximum-rated conditions for extended periods may affect device reliability.

- NOTES: 1. Voltage values for maximum ratings are with respect to AGND.
2. Human Body Model per Method 3015.2 of MIL–STD–883B.

3.2 Recommended Operating Conditions

	TEST CONDITIONS	MIN	NOM	MAX	UNIT
Analog supply voltage, AV_{DD} (see Note 3)		4.75	5	5.25	V
Digital supply voltage, DV_{DD1}		4.75	5	5.25	V
Digital supply voltage, DV_{DD2}	3.3-V interface	3.13	3.3	3.47	V
	5-V interface	4.75	5	5.25	V
Operating free-air temperature, T_A		0	25	70	°C

NOTE 3: Voltages at analog inputs and outputs are with respect to the AV_{SS1} , AV_{SS2} , and AV_{SS3} terminals.

3.3 Electrical Characteristics

3.3.1 Power Supplies, $T_A = 25^\circ\text{C}$, $AV_{DD} = DV_{DD} = 5\text{ V} \pm 5\%$

PARAMETER	TEST CONDITIONS (SEE NOTE 4)	MIN	TYP	MAX	UNIT
Power supply current (see Note 5)	Normal		56	62	mA
	PR5, PR4, PR3, PR1, PR0 – internal clock disable (with V_{ref} off)		100		μA
Power supply rejection ratio	1 kHz	48	55		dB
	100 kHz (see Note 6)	52	55		dB

NOTES: 4. PR5 through PR0 refer to power-down bits contained register 0x26 (see Section 2.3, *Software Interface*).
 5. Current rating for line outputs driving a 10-k Ω load, mono driver unloaded.
 6. Characterized data only.

3.3.2 Static Digital Specifications, $T_A = 25^\circ\text{C}$, $AV_{DD} = DV_{DD1} = DV_{DD2} = 5\text{ V} \pm 5\%$

PARAMETER	MIN	MAX	UNIT
V_{IH} High-level input voltage	2	$DV_{DD} + 0.3$	V
V_{IL} Low-level input voltage	-0.3	0.8	V
V_{OH} High-level output voltage ($I_O = -1\text{ mA}$)	2.4	DV_{DD}	V
V_{OL} Low-level output voltage ($I_O = 4\text{ mA}$)		0.4	V
Input leakage current	-10	10	μA
Output leakage current	-10	10	μA

3.3.3 Static Digital Specifications, $T_A = 25^\circ\text{C}$, $AV_{DD} = DV_{DD1} = 5\text{ V} \pm 5\%$, $DV_{DD2} = 3.3\text{ V} \pm 5\%$

PARAMETER	MIN	MAX	UNIT
V_{IH} High-level input voltage	2	$DV_{DD} + 0.3$	V
V_{IL} Low-level input voltage		1	V
V_{OH} High-level output voltage ($I_O = -1\text{ mA}$)	2.97	DV_{DD}	V
V_{OL} Low-level output voltage ($I_O = 4\text{ mA}$)		0.33	V
Input leakage current	-10	10	μA
Output leakage current	-10	10	μA

3.3.4 Analog Electrical Characteristics

3.3.4.1 Analog-to-Digital Converter, $T_A = 25^\circ\text{C}$, $AV_{DD} = DV_{DD} = 5\text{ V} \pm 5\%$, $f_S = 48\text{ kHz}$, Gain Settings at 0 dB, Input = 1 Vrms Sine Wave at 1 kHz

PARAMETER	TEST CONDITIONS	MIN	TYP	MAX	UNIT
Resolution			16		Bits
Instantaneous dynamic range (see Note 7)	All inputs except MIC	80	85		dB
	MIC (see Note 9)	70	72		dB
Signal-to-(noise + distortion) (see Note 8)	All inputs except MIC	84	88		dB
	MIC (see Note 9)	72	77		dB
Total harmonic distortion + noise (reference full scale)			0.004	0.007	%
Signal-to-intermodulation distortion	Line Load	90			dB
Idle channel tone rejection			-105		dB
Offset error			3		mV
ADC crosstalk	All inputs		-110	104	dB
Frequency response	0 to $0.4 f_S$	-0.1		0.1	dB
ADC conversion latency			16		Number of f_S periods

NOTES: 7. Exceeds the AC'97 specification. Measured using Awtd noise curve.

8. Measured using Awtd noise curve.

9. Microphone gain settings: 20-dB boost = on, gain = 12 dB

3.3.4.2 Digital-to-Analog Converter, $T_A = 25^\circ\text{C}$, $AV_{DD} = DV_{DD} = 5\text{ V} \pm 5\%$, $f_S = 48\text{ kHz}$, All Gains = 0 dB

PARAMETER	TEST CONDITIONS	MIN	TYP	MAX	UNIT
DAC resolution			16		Bits
DAC signal-to-noise ratio	see Note 10	90	93		dB
Instantaneous dynamic range	see Note 11	83	87		dB
Signal-to-noise + distortion	see Note 11	74			dB
Signal-to-intermodulation distortion		90			dB
Total harmonic distortion			0.01	0.02	%
Frequency response (20 Hz to 19.2 kHz)		-0.5		0.1	dB
Deviation from linear phase				1.4	Degree
DAC crosstalk			-99	-94	dB
DAC conversion latency			16		Number of f_S Periods

NOTES: 10. Exceeds the AC'97 specifications. Specified as the ratio of the rms output level with 1-kHz full-scale input to the rms output level with all zeros into the digital input. Measured Awtd over a 20-Hz to 20-kHz bandwidth (AES17-1991 idle channel noise or EIAJ CP-307 signal-to-noise ratio).

11. Measured using Awtd noise curve.

3.3.4.3 Analog Input Performance Data, $T_A = 25^\circ\text{C}$, $AV_{DD} = DV_{DD} = 5\text{ V} \pm 5\%$, $f_S = 48\text{ kHz}$,
For Gain Settings at 0 dB, Input = 1 Vrms Sine Wave at 1 kHz

PARAMETER	TEST CONDITIONS	MIN	TYP	MAX	UNIT
DC ACCURACY					
Programmable input gain settings (all settings tested)	All inputs except MIC	-34.5		12	dB
Interchannel gain mismatch	All inputs		± 0.15	± 0.4	dB
Gain step size for PGAs on the inputs	All inputs	1.4	1.5	1.6	dB
Gain drift			100		ppm/ $^\circ\text{C}$
Gain error with respect to 2.8 V_{pp}	All inputs			10	%
Offset error	All inputs			100	LSB
Crosstalk between input channels			-110	-104	dB
Common-mode rejection ratio	CD pseudo-diff input	60	67		dB
INPUT VOLTAGE					
Full-scale input voltage	All inputs except MIC	2.66	2.8	2.94	V_{pp}
	MIC1, MIC2 inputs, 20 dB off		2.8		V_{pp}
	MIC1, MIC2 inputs, with 20 dB boost on		.28		V_{pp}
INPUT IMPEDANCE					
Input impedance	MIC1, MIC2 only, resistance	10			$k\Omega$
	MIC1, MIC2 only, capacitance			15	pF
	All other analog inputs, resistance	20	40		$k\Omega$
	All other analog inputs, capacitance			15	pF

3.3.4.4 Analog Output Performance Data, $T_A = 25^\circ\text{C}$, $AV_{DD} = DV_{DD} = 5\text{ V} \pm 5\%$

PARAMETER	TEST CONDITIONS	MIN	TYP	MAX	UNIT
ANALOG PERFORMANCE					
Signal-to-noise ratio, CD to LINE_OUT		90			dB
Signal-to-noise ratio, other inputs to LINE_OUT	see Note 12	90			dB
Mute attenuation			90		dB
Total dynamic range	LINE_OUT (see Note 13)	90			dB
Signal to noise + distortion		80	81		dB
OUTPUT DRIVER LEVELS					
Full scale output voltage	LINE_OUT	2.6	2.8	2.94	V_{pp}
Voltage reference output voltage	REF	2.65	2.55	2.45	V
Voltage reference output current	REF		100		μA
Buffered V_{ref} output voltage	REFOUT	2.65	2.55	2.45	V
Buffered V_{ref} output current	REFOUT		5		mA
OUTPUT DRIVER LOAD					
Output load impedance	LINE_OUT	10			$\text{K}\Omega$
Output load capacitance				300	pF
OUTPUT NOISE LEVEL					
Total out of band energy (28.8 kHz to 3 MHz) (see Note 14)	LINE_OUT			-45	dB
DC ACCURACY					
Offset voltage	Output drivers		10		mV
Gain drift			100		ppm/ $^\circ\text{C}$
Interchannel gain mismatch	Output drivers		0.05	0.5	dB

- NOTES: 12. The Awtd noise measurement with one input selected in the mixer, and all other mixer selections open.
 13. The ratio of the rms output level with 1-kHz full-scale input to the rms output level when the LINE_OUT is muted.
 14. The integrated out-of-band noise generated by the DAC, during normal playback with respect to a 1 Vrms DAC output.

3.3.4.5 ADC Decimation Filter, $T_A = 25^\circ\text{C}$, $AV_{DD} = DV_{DD} = 5\text{ V} \pm 5\%$

PARAMETER	TEST CONDITIONS	MIN	TYP	MAX	UNIT
Pass band		20		19.2	kHz
Pass band ripple	see Note 15			± 0.1	dB
Transition band		19.2		28.8	kHz
Stop band		28.8			kHz
Stop band attenuation (28.8 kHz to 3 MHz)		74			dB
Group delay				0.6	ms

NOTE 15: Exceeds the AC'97 specification

3.3.4.6 DAC Interpolation Filter, $T_A = 25^\circ\text{C}$, $AV_{DD} = DV_{DD} = 5\text{ V} \pm 5\%$

PARAMETER	TEST CONDITIONS	MIN	TYP	MAX	UNIT
Pass band		20		19.2	kHz
Pass band ripple	see Note 15			± 0.1	dB
Transition band		19.2		28.8	kHz
Stop band		28.8			kHz
Stop band attenuation (28.8 kHz to 3 MHz)		74			dB
Group delay				0.6	ms

NOTE 15: Exceeds the AC'97 specification

3.4 Timing Requirements

3.4.1 AC-Link Low-Power Mode Timing, $T_A = 25^\circ\text{C}$, $AV_{DD} = DV_{DD} = 5\text{ V dc}$, $AV_{SS} = DV_{SS} = 0\text{ V}$, 50-pF External Load

PARAMETER	MIN	TYP	MAX	UNIT
t_{d1} Delay time, $SDATA_IN\downarrow$ to $BIT_CLK\downarrow$			1	ms

3.4.2 AC-Link Timing, $T_A = 25^\circ\text{C}$, $AV_{DD} = DV_{DD} = 5\text{ V dc}$, $AV_{SS} = DV_{SS} = 0\text{ V}$, 50-pF External Load

3.4.2.1 Clock Timing

PARAMETER	MIN	TYP	MAX	UNIT
Frequency, BIT_CLK		12.288		MHz
$t_{cyc}(BIT_CLK)$ Cycle time, BIT_CLK		81.4		ns
Jitter, BIT_CLK			750	ps
$t_{wH}(CLK)$ Pulse width, BIT_CLK high (see Note 16)	32.56	40.7	48.84	ns
$t_{wL}(CLK)$ Pulse width, BIT_CLK low (see Note 16)	32.56	40.7	48.84	ns
Frequency, $SYNC$		48.0		kHz
$t_{cyc}(SYNC)$ Cycle time, $SYNC$		20.8		ms
$t_{wH}(SYNC)$ Pulse width, $SYNC$ high		1.3		ms
$t_{wL}(SYNC)$ Pulse width, $SYNC$ low		19.5		ms

NOTE 16: Worst case duty cycle restricted to 40/60.

3.4.3 Data Setup and Hold Timing

PARAMETER	MIN	TYP	MAX	UNIT
t_{su1} Setup time, SDATA_IN, SDATA_OUT, SYNC valid to BIT_CLK↓	15			ns
t_{h1} Hold time, BIT_CLK↓ to SDATA_IN, SDATA_OUT, SYNC invalid	5			ns

3.4.4 Signal Rise and Fall Timing

PARAMETER	MIN	TYP	MAX	UNIT
$t_r(\text{CLK})$ Rise time, BIT_CLK	2		6	ns
$t_f(\text{CLK})$ Fall time, BIT_CLK	2		6	ns
$t_r(\text{DIN})$ Rise time, SDATA_IN	2		6	ns
$t_f(\text{DIN})$ Fall time, SDATA_IN	2		6	ns
$t_r(\text{DOUT})$ Rise time, SDATA_OUT	2		6	ns
$t_f(\text{DOUT})$ Fall time, SDATA_OUT	2		6	ns
$t_r(\text{SYNC})$ Rise time, SYNC	2		6	ns
$t_f(\text{SYNC})$ Fall time, SYNC	2		6	ns

3.4.5 Warm/Cold Reset Timing, $T_A = 25^\circ\text{C}$, $AV_{DD} = DV_{DD} = 5\text{ V dc}$, $AV_{SS} = DV_{SS} = 0\text{ V}$, 50-pF External Load

PARAMETER	MIN	TYP	MAX	UNIT
$t_{wL}(\text{RST})$ Pulse width, $\overline{\text{RESET}}$ low	1			ms
$t_d(\text{RST_CLK})$ Delay time, $\overline{\text{RESET}}\uparrow$ to BIT_CLK↑	162.8			ns

PARAMETER	MIN	TYP	MAX	UNIT
$t_{wH}(\text{SYNC})$ Pulse width, SYNC high	1	1.3		ms
$t_d(\text{SYNC_CLK})$ Delay time, SYNC↓ to BIT_CLK↑	162.8			ns

3.4.6 ATE Test Mode Timing, $T_A = 25^\circ\text{C}$, $AV_{DD} = DV_{DD} = 5\text{ V dc}$, $AV_{SS} = DV_{SS} = 0\text{ V}$, 50-pF External Load

PARAMETER	MIN	TYP	MAX	UNIT
t_{su3} Setup time, SDATA_OUT↑, SYNC to $\overline{\text{RESET}}\uparrow$ (see Notes 17 and 18)	15			ns
$t_d(\text{off})$ Delay time, $\overline{\text{RESET}}\uparrow$ to SDATA_IN, BIT_CLK Hi-Z (see Notes 17 and 18)			25	ns

NOTES: 17. All AC-Link signals are normally low though $\overline{\text{RESET}}\uparrow$. SDATA_OUT should be high prior to $\overline{\text{RESET}}\uparrow$ which causes the TLC320AD90C AC-Link outputs to go high impedance which is suitable for ATE in circuit testing.

18. The Texas Instruments internal test mode is entered by bringing SYNC high prior to $\overline{\text{RESET}}\uparrow$. This mode has no effect on the TLC320AD90C AC-Link output signal levels.

4 Parameter Measurement Information

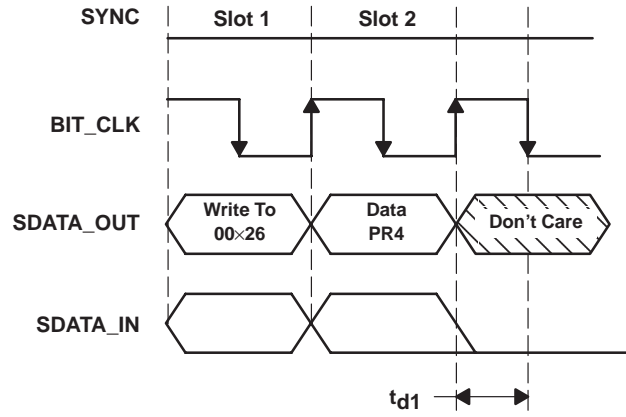


Figure 4-1. AC-Link Low-Power Mode Timing

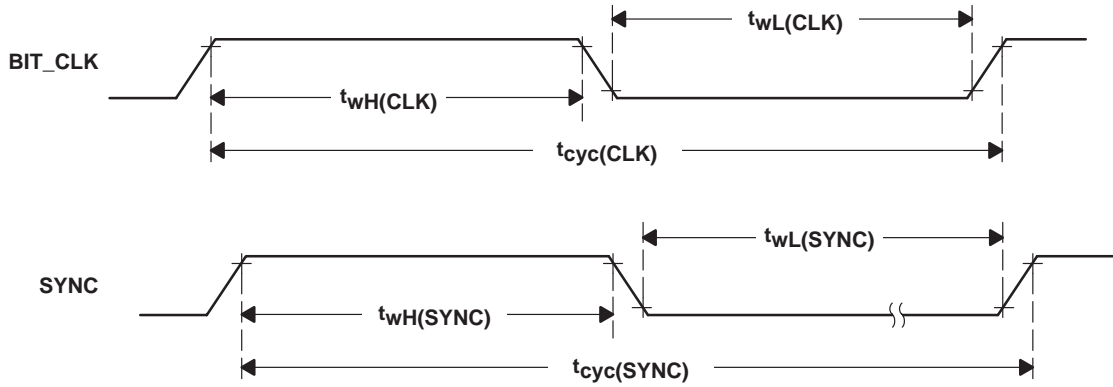


Figure 4-2. Clock Timing

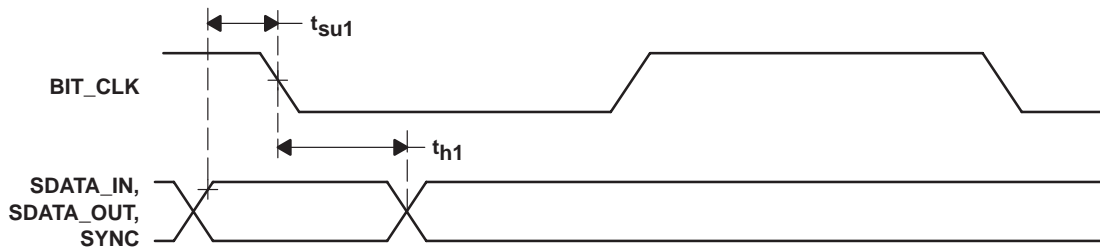


Figure 4-3. Data Setup and Hold Timing

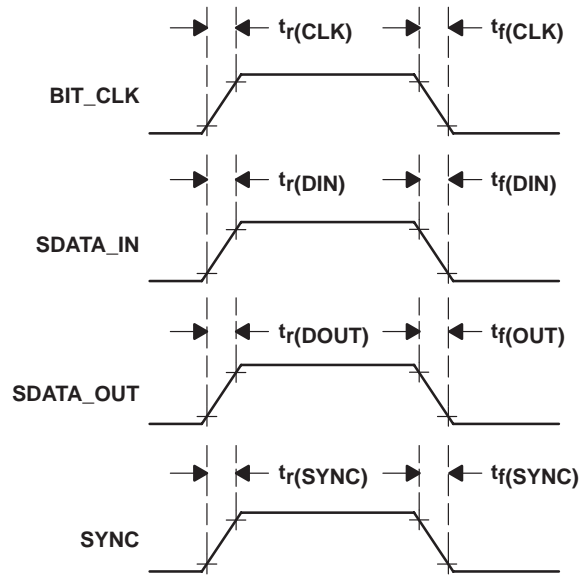


Figure 4-4. Signal Rise and Fall Timing

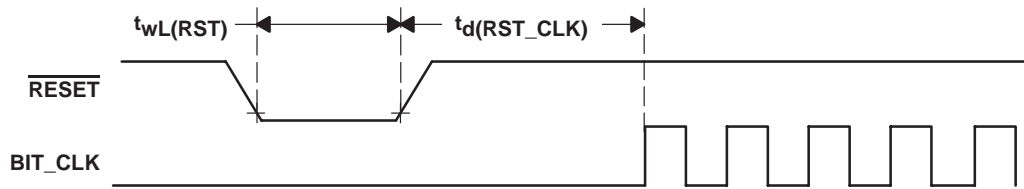


Figure 4-5. Cold Reset Timing

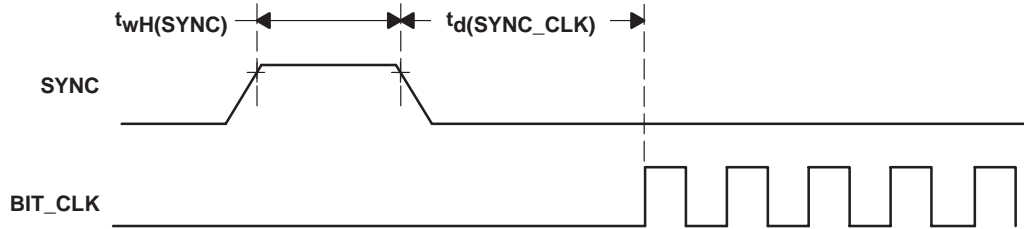


Figure 4-6. Warm Reset Timing

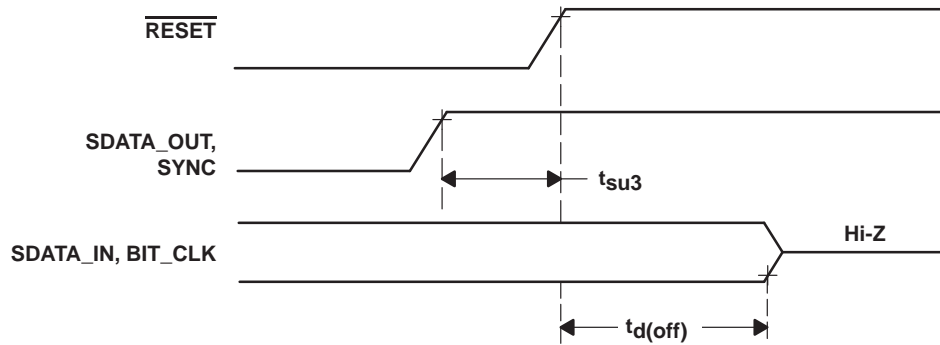


Figure 4-7. ATE Test Mode Timing

5 Application Information/System Usage

The system diagram in Figure 5–1 shows the essential components in the design of a system using the TLC320AD90C. In this scenario, the TLC320AD90C operates at the fixed sample rate of 48 kHz and performs digital-to-analog conversion, analog-to-digital conversion, analog input, mixing, and allows for the insertion of analog and digital signal processing (3D sound, stereo enhancement, etc).

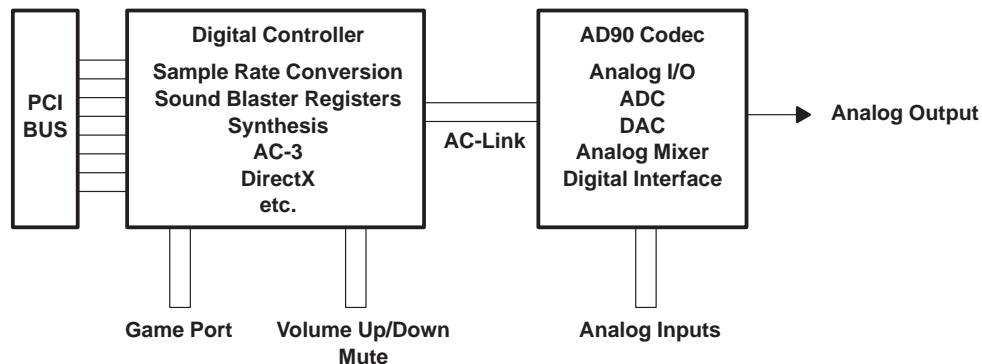


Figure 5–1. System Diagram

The digital controller, generally connected to the PCI bus, performs the following functions:

- Sample rate conversion to and from 48 kHz
- Sound Blaster compatibility
- FM synthesis
- Wave table synthesis
- Direct Sound acceleration (optional)
- AC-3 decode

The digital link is an AC'97 compatible bidirectional, 5-wire, serial TDM format interface designed for a dedicated point-to-point interconnect on a circuit board.

5.1 Software Driver Support for the Texas Instruments TLC320AD90C Stereo Codec

The TLC320AD90C codec is compatible with software drivers developed to conform to the AC'97 audio codec specification.

With the use of an AC'97 compliant digital controller, the TLC320AD90C can perform high quality (90-dB SNR) sample rate conversions on a minimum of four simultaneous channels (stereo in and stereo out) and between a variety of sample rates. With the input sample rate at 48 kHz, data conversion to 8, 11.025, 16, 22.05, 32, and 44.1 kHz are possible.

Mono PCM always translates to two mono channels (L and R) on the AC'97 AC-Link.

5.2 The Texas Instruments TLC320AD90C Connected to an AC'97 Compliant Digital Controller

The TLC320AD90C communicates with an AC'97 compliant digital controller through the digital serial link or AC-Link. In addition to all digital audio streams, command and status information is also communicated over this point-to-point serial connection. This connection is shown in Figure 5–2.

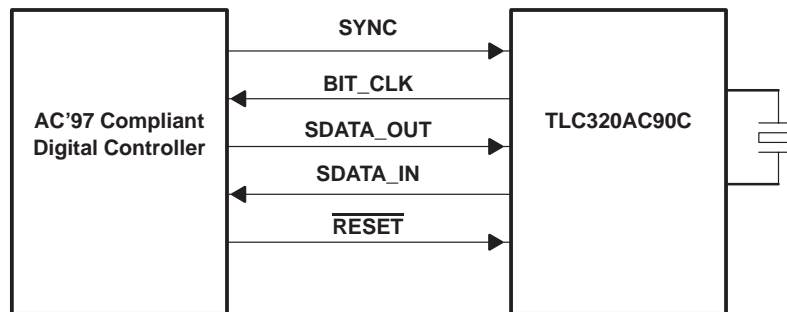


Figure 5–2. Connection to an AC'97 Digital Controller

5.3 Testability

5.3.1 Activating the Test Modes

The TLC320AD90C has two test modes. One mode is for ATE in circuit test and the other mode is for Texas Instruments specific tests. The two test modes are activated according to the following:

- The TLC320AD90C enters the ATE in circuit test mode if SDATA_OUT is sampled high at the trailing edge of RESET.
- The TLC320AD90C enters the Texas Instruments test mode when coming out of reset if SYNC is high.
- The TLC320AD90C enters Texas Instruments Scan Test mode when coming out of RESET when both SYNC and SDATA_OUT are held high.

These cases should never occur during standard operating conditions.

Regardless of the test mode, the digital controller must issue a cold reset to resume normal operation of the TLC320AD90C.

5.3.2 Test Mode Functions – ATE in Circuit Test Mode

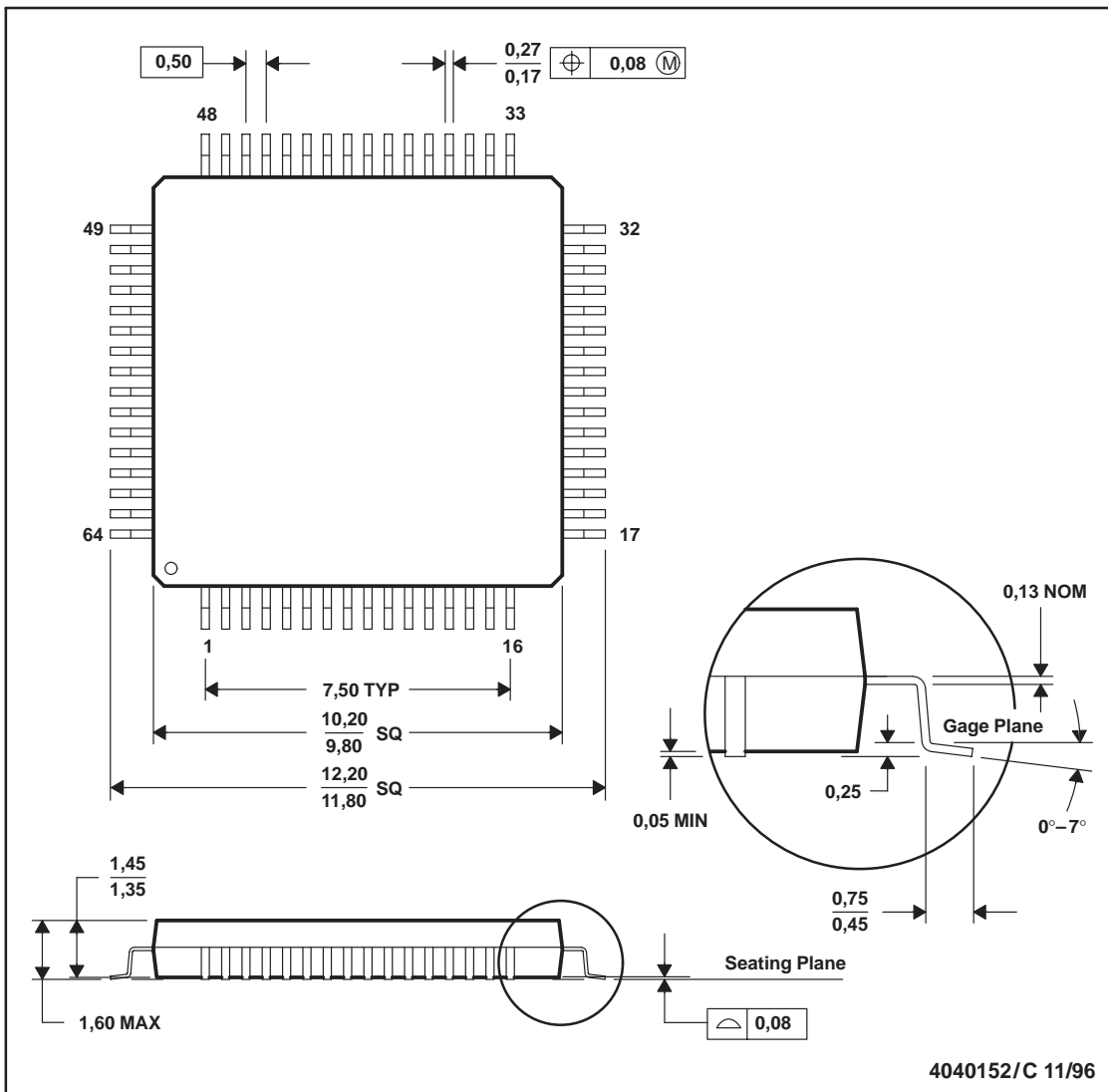
When the TLC320AD90C is placed in the ATE test mode, the TLC320AD90C digital AC-Link outputs (i.e., BIT_CLK and SDATA_IN) are driven to a high-impedance state. This condition allows ATE in circuit testing of the digital controller.

Appendix A

Mechanical Data

PM (S-PQFP-G64)

PLASTIC QUAD FLATPACK



- NOTES:
- A. All linear dimensions are in millimeters.
 - B. This drawing is subject to change without notice.
 - C. Falls within JEDEC MS-026
 - D. May also be thermally enhanced plastic with leads connected to the die pads.

IMPORTANT NOTICE

Texas Instruments and its subsidiaries (TI) reserve the right to make changes to their products or to discontinue any product or service without notice, and advise customers to obtain the latest version of relevant information to verify, before placing orders, that information being relied on is current and complete. All products are sold subject to the terms and conditions of sale supplied at the time of order acknowledgement, including those pertaining to warranty, patent infringement, and limitation of liability.

TI warrants performance of its semiconductor products to the specifications applicable at the time of sale in accordance with TI's standard warranty. Testing and other quality control techniques are utilized to the extent TI deems necessary to support this warranty. Specific testing of all parameters of each device is not necessarily performed, except those mandated by government requirements.

CERTAIN APPLICATIONS USING SEMICONDUCTOR PRODUCTS MAY INVOLVE POTENTIAL RISKS OF DEATH, PERSONAL INJURY, OR SEVERE PROPERTY OR ENVIRONMENTAL DAMAGE ("CRITICAL APPLICATIONS"). TI SEMICONDUCTOR PRODUCTS ARE NOT DESIGNED, AUTHORIZED, OR WARRANTED TO BE SUITABLE FOR USE IN LIFE-SUPPORT DEVICES OR SYSTEMS OR OTHER CRITICAL APPLICATIONS. INCLUSION OF TI PRODUCTS IN SUCH APPLICATIONS IS UNDERSTOOD TO BE FULLY AT THE CUSTOMER'S RISK.

In order to minimize risks associated with the customer's applications, adequate design and operating safeguards must be provided by the customer to minimize inherent or procedural hazards.

TI assumes no liability for applications assistance or customer product design. TI does not warrant or represent that any license, either express or implied, is granted under any patent right, copyright, mask work right, or other intellectual property right of TI covering or relating to any combination, machine, or process in which such semiconductor products or services might be or are used. TI's publication of information regarding any third party's products or services does not constitute TI's approval, warranty or endorsement thereof.