

# $\mu$ A723C, $\mu$ A723M, $\mu$ A723Y PRECISION VOLTAGE REGULATORS

SLVS057C – AUGUST 1972 – REVISED NOVEMBER 1996

- 150-mA Load Current Without External Power Transistor
- Typically 0.02% Input Regulation and 0.03% Load Regulation ( $\mu$ A723M)
- Adjustable Current-Limiting Capability
- Input Voltages to 40 V
- Output Adjustable From 2 V to 37 V
- Direct Replacement for Fairchild  $\mu$ A723C and  $\mu$ A723M

## description

The  $\mu$ A723C and  $\mu$ A723M are precision monolithic integrated circuit voltage regulators featuring high ripple rejection, excellent input and load regulation, excellent temperature stability, and low standby current. The circuit consists of a temperature-compensated reference-voltage amplifier, an error amplifier, a 150-mA output transistor, and an adjustable output current limiter.

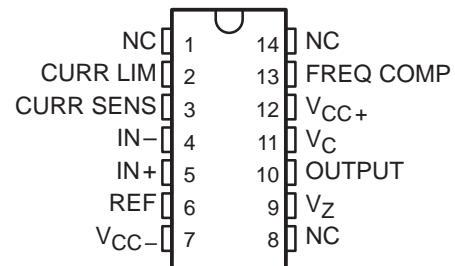
The  $\mu$ A723C and  $\mu$ A723M are designed for use in positive or negative power supplies as a series, shunt, switching, or floating regulator. For output currents exceeding 150 mA, additional pass elements may be connected as shown in Figures 4 and 5.

The  $\mu$ A723C is characterized for operation from 0°C to 70°C. The  $\mu$ A723M is characterized for operation over the full military temperature range of -55°C to 125°C.

$\mu$ A723C . . . D OR N PACKAGE

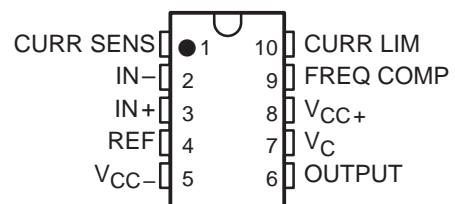
$\mu$ A723M . . . J PACKAGE

(TOP VIEW)



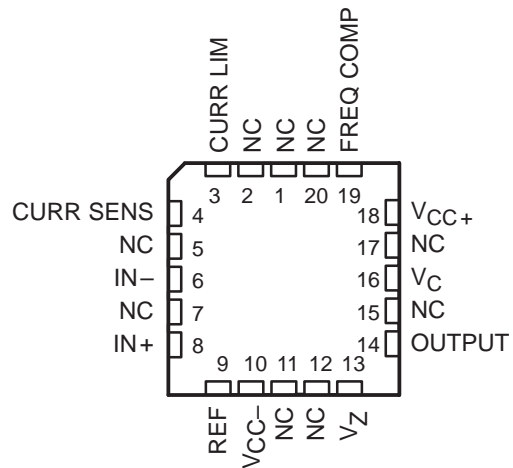
$\mu$ A723M . . . U PACKAGE

(TOP VIEW)



$\mu$ A723M . . . FK PACKAGE

(TOP VIEW)



NC – No internal connection



Please be aware that an important notice concerning availability, standard warranty, and use in critical applications of Texas Instruments semiconductor products and disclaimers thereto appears at the end of this data sheet.

PRODUCTION DATA information is current as of publication date. Products conform to specifications per the terms of Texas Instruments standard warranty. Production processing does not necessarily include testing of all parameters.

**TEXAS  
INSTRUMENTS**

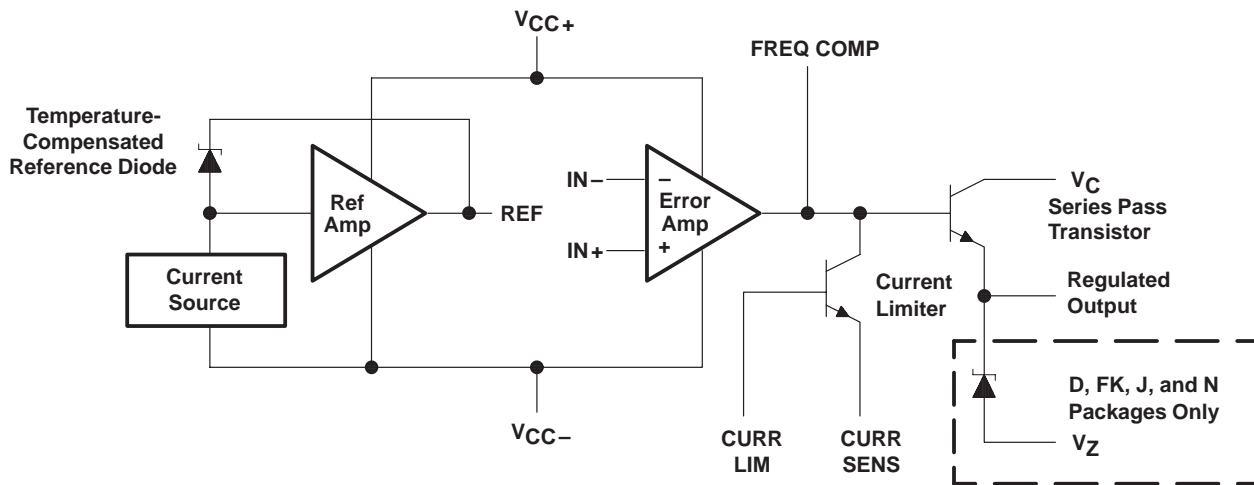
POST OFFICE BOX 655303 • DALLAS, TEXAS 75265

Copyright © 1996, Texas Instruments Incorporated

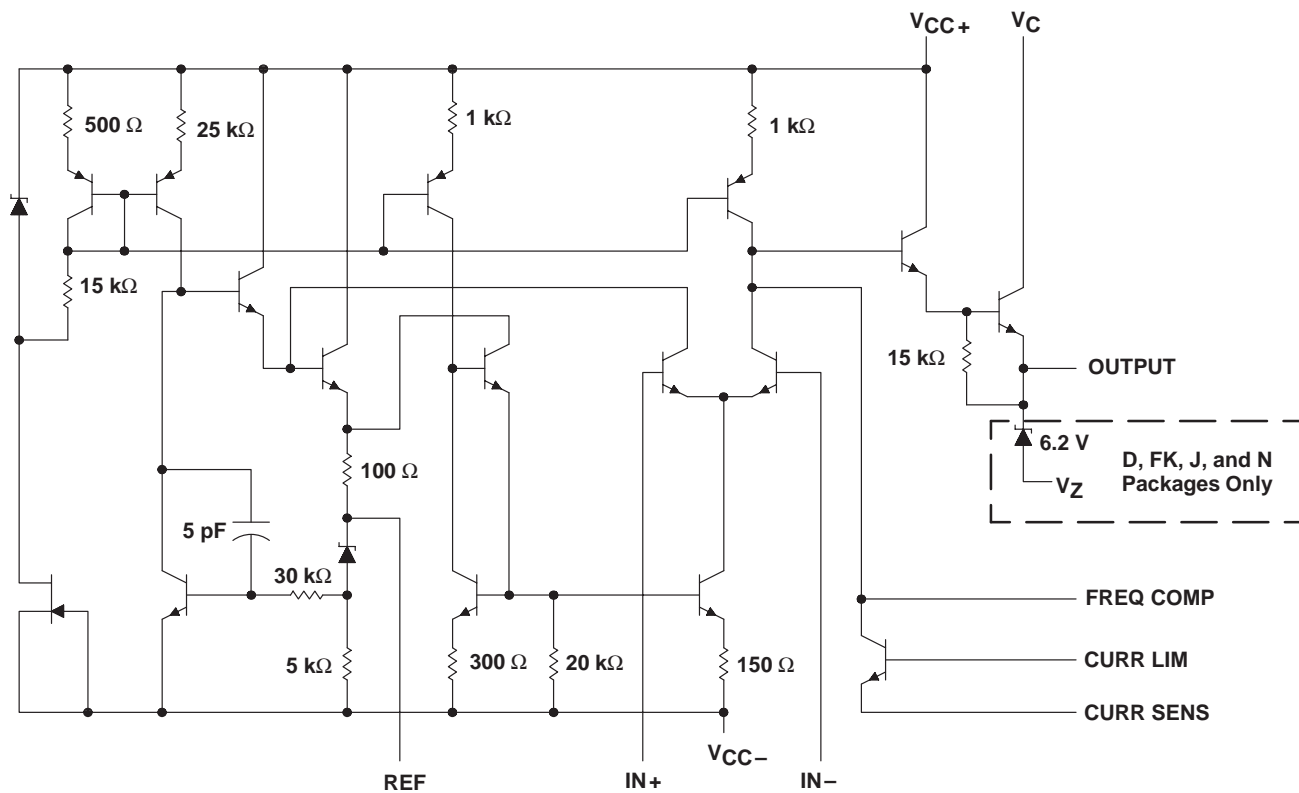
# $\mu$ A723C, $\mu$ A723M, $\mu$ A723Y PRECISION VOLTAGE REGULATORS

SLVS057C – AUGUST 1972 – REVISED NOVEMBER 1996

## functional block diagram



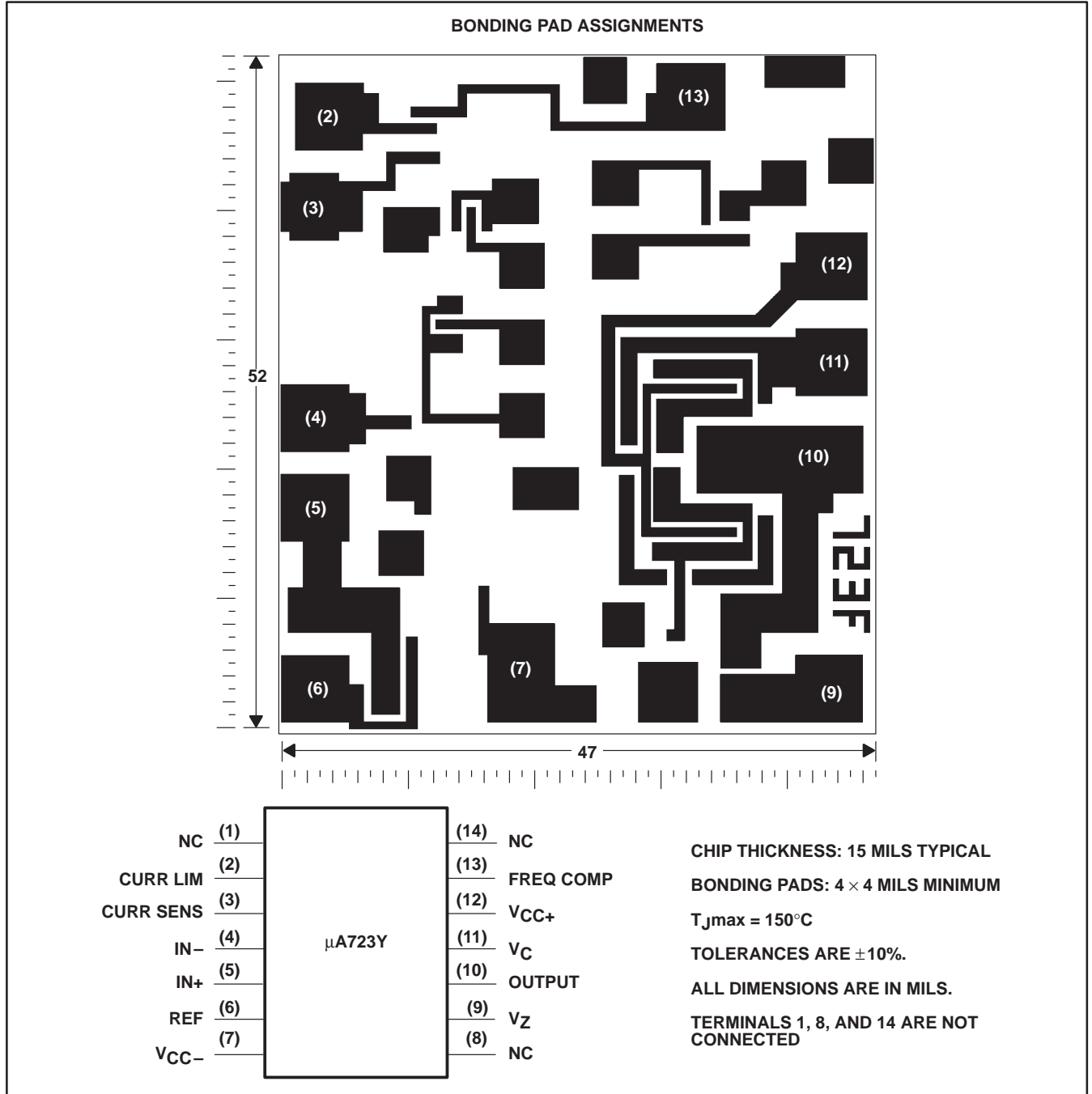
## schematic



Resistor and capacitor values shown are nominal.

$\mu$ A723Y chip information

This chip, when properly assembled, displays characteristics similar to the  $\mu$ A723C. Thermal compression or ultrasonic bonding can be used on the doped aluminum bonding pads. The chips can be mounted with conductive epoxy or a gold-silicon preform.



# $\mu$ A723C, $\mu$ A723M, $\mu$ A723Y PRECISION VOLTAGE REGULATORS

SLVS057C – AUGUST 1972 – REVISED NOVEMBER 1996

## absolute maximum ratings over operating free-air temperature range (unless otherwise noted)<sup>†</sup>

Peak voltage from $V_{CC+}$ to $V_{CC-}$ ( $t_w \leq 50$ ms)	50 V
Continuous voltage from $V_{CC+}$ to $V_{CC-}$	40 V
Input-to-output voltage differential	40 V
Differential input voltage to error amplifier	$\pm 5$ V
Voltage between noninverting input and $V_{CC-}$	8 V
Current from $V_Z$	25 mA
Current from REF	15 mA
Continuous total dissipation (see Note 1)	See Dissipation Rating Table
Operating free-air temperature range, $T_A$ : $\mu$ A723C	0°C to 70°C
$\mu$ A723M	-55°C to 125°C
Storage temperature range, $T_{stg}$	-65°C to 150°C
Case temperature for 60 seconds, $T_C$ : FK package	260°C
Lead temperature 1,6 mm (1/16 inch) from case for 60 seconds: J or U package	300°C
Lead temperature 1,6 mm (1/16 inch) from case for 10 seconds: D or N package	260°C

<sup>†</sup> Stresses beyond those listed under “absolute maximum ratings” may cause permanent damage to the device. These are stress ratings only, and functional operation of the device at these or any other conditions beyond those indicated under “recommended operating conditions” is not implied. Exposure to absolute-maximum-rated conditions for extended periods may affect device reliability.

NOTE 1: Power dissipation =  $[I_{(standby)} + I_{(ref)}] V_{CC} + [V_C - V_O] I_O$ .

DISSIPATION RATING TABLE

PACKAGE	$T_A \leq 25^\circ\text{C}$ POWER RATING	DERATING FACTOR	DERATE ABOVE $T_A$	$T_A = 70^\circ\text{C}$ POWER RATING	$T_A = 125^\circ\text{C}$ POWER RATING
D	950 mW	7.6 mW/°C	25°C	608 mW	—
FK and J	1000 mW	11.0 mW/°C	59°C	879 mW	274 mW
N	1000 mW	9.2 mW/°C	41°C	733 mW	—
U	675 mW	5.4 mW/°C	25°C	432 mW	135 mW

## recommended operating conditions

	MIN	MAX	UNIT
Input voltage, $V_I$	9.5	40	V
Output voltage, $V_O$	2	37	V
Input-to-output voltage differential, $V_C - V_O$	3	38	V
Output current, $I_O$		150	mA



# μA723C, μA723M, μA723Y PRECISION VOLTAGE REGULATORS

SLVS057C – AUGUST 1972 – REVISED NOVEMBER 1996

## electrical characteristics at specified free-air temperature (see Notes 2 and 3)

PARAMETER	TEST CONDITIONS	T <sub>A</sub> †	μA723C			μA723M			UNIT
			MIN	TYP	MAX	MIN	TYP	MAX	
Input regulation	V <sub>I</sub> = 12 V to V <sub>I</sub> = 15 V	25°C		0.1	1		0.1	1	mV/V
	V <sub>I</sub> = 12 V to V <sub>I</sub> = 40 V	25°C		1	5		0.2	2	
	V <sub>I</sub> = 12 V to V <sub>I</sub> = 15 V	Full range						3	
Ripple rejection	f = 50 Hz to 10 kHz, C <sub>ref</sub> = 0	25°C		74			74		dB
	f = 50 Hz to 10 kHz, C <sub>ref</sub> = 5 μF	25°C		86			86		
Output regulation		25°C		-0.3	-2		-0.3	-1.5	mV/V
		Full range			-6			-6	
Reference voltage, V <sub>ref</sub>		25°C	6.8	7.15	7.5	6.95	7.15	7.35	V
Standby current	V <sub>I</sub> = 30 V, I <sub>O</sub> = 0	25°C		2.3	4		2.3	3.5	mA
Temperature coefficient of output voltage		Full range		0.003	0.015		0.002	0.015*	%/°C
Short-circuit output current	R <sub>SC</sub> = 10 Ω, V <sub>O</sub> = 0	25°C		65			65		mA
Output noise voltage	BW = 100 Hz to 10 kHz, C <sub>ref</sub> = 0	25°C		20			20		μV
	BW = 100 Hz to 10 kHz, C <sub>ref</sub> = 5 μF	25°C		2.5			2.5		

\*On products compliant to MIL-STD-883, Class B, this parameter is not production tested.

† Full range for μA723C is 0°C to 70°C and for μA723M is -55°C to 125°C.

NOTES: 2. For all values in this table, the device is connected as shown in Figure 1 with the divider resistance as seen by the error amplifier ≤ 10 kΩ. Unless otherwise specified, V<sub>I</sub> = V<sub>CC+</sub> = V<sub>C</sub> = 12 V, V<sub>CC-</sub> = 0, V<sub>O</sub> = 5 V, I<sub>O</sub> = 1 mA, R<sub>SC</sub> = 0, and C<sub>ref</sub> = 0.

3. Pulse-testing techniques must be used that will maintain the junction temperature as close to the ambient temperature as possible.

## electrical characteristics, T<sub>A</sub> = 25°C (see Notes 2 and 3)

PARAMETER	TEST CONDITIONS	μA723Y			UNIT
		MIN	TYP	MAX	
Input regulation	V <sub>I</sub> = 12 V to V <sub>I</sub> = 15 V		0.1		mV/V
	V <sub>I</sub> = 12 V to V <sub>I</sub> = 40 V		1		
Ripple rejection	f = 50 Hz to 10 kHz, C <sub>ref</sub> = 0		74		dB
	f = 50 Hz to 10 kHz, C <sub>ref</sub> = 5 μF		86		
Output regulation			-0.3		mV/V
Reference voltage, V <sub>ref</sub>			7.15		V
Standby current	V <sub>I</sub> = 30 V, I <sub>O</sub> = 0		2.3		mA
Short-circuit output current	R <sub>SC</sub> = 10 Ω, V <sub>O</sub> = 0		65		mA
Output noise voltage	BW = 100 Hz to 10 kHz, C <sub>ref</sub> = 0		20		μV
	BW = 100 Hz to 10 kHz, C <sub>ref</sub> = 5 μF		2.5		

NOTES: 2. For all values in this table, the device is connected as shown in Figure 1 with the divider resistance as seen by the error amplifier ≤ 10 kΩ. Unless otherwise specified, V<sub>I</sub> = V<sub>CC+</sub> = V<sub>C</sub> = 12 V, V<sub>CC-</sub> = 0, V<sub>O</sub> = 5 V, I<sub>O</sub> = 1 mA, R<sub>SC</sub> = 0, and C<sub>ref</sub> = 0.

3. Pulse-testing techniques must be used that will maintain the junction temperature as close to the ambient temperature as possible.



# μA723C, μA723M, μA723Y PRECISION VOLTAGE REGULATORS

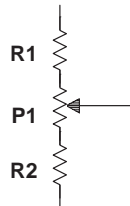
SLVS057C – AUGUST 1972 – REVISED NOVEMBER 1996

## APPLICATION INFORMATION

**Table 1. Resistor Values (kΩ) for Standard Output Voltages**

OUTPUT VOLTAGE (V)	APPLICABLE FIGURES (see NOTE 4)	FIXED OUTPUT ±5%		OUTPUT ADJUSTABLE ±10% (see NOTE 5)		
		R1 (kΩ)	R2 (kΩ)	R1 (kΩ)	P1 (kΩ)	P2 (kΩ)
3.0	1, 5, 6, 9, 11, 12 (4)	4.12	3.01	1.8	0.5	1.2
3.6	1, 5, 6, 9, 11, 12 (4)	3.57	3.65	1.5	0.5	1.5
5.0	1, 5, 6, 9, 11, 12 (4)	2.15	4.99	0.75	0.5	2.2
6.0	1, 5, 6, 9, 11, 12 (4)	1.15	6.04	0.5	0.5	2.7
9.0	2, 4, (5, 6, 9, 12)	1.87	7.15	0.75	1.0	2.7
12	2, 4, (5, 6, 9, 12)	4.87	7.15	2.0	1.0	3.0
15	2, 4, (5, 6, 9, 12)	7.87	7.15	3.3	1.0	3.0
28	2, 4, (5, 6, 9, 12)	21.0	7.15	5.6	1.0	2.0
45	7	3.57	48.7	2.2	10	39
75	7	3.57	78.7	2.2	10	68
100	7	3.57	105	2.2	10	91
250	7	3.57	255	2.2	10	240
-6 (see Note 6)	3, 10	3.57	2.43	1.2	0.5	0.75
-9	3, 10	3.48	5.36	1.2	0.5	2.0
-12	3, 10	3.57	8.45	1.2	0.5	3.3
-15	3, 10	3.57	11.5	1.2	0.5	4.3
-28	3, 10	3.57	24.3	1.2	0.5	10
-45	8	3.57	41.2	2.2	10	33
-100	8	3.57	95.3	2.2	10	91
-250	8	3.57	249	2.2	10	240

- NOTES: 4. The R1/R2 divider may be across either  $V_O$  or  $V_{(ref)}$ . If the divider is across  $V_{(ref)}$ , use the figure numbers without parentheses. If the divider is across  $V_O$ , use the figure numbers in parentheses.
5. To make the voltage adjustable, the R1/R2 divider shown in the figures must be replaced by the divider shown below.



**Adjustable Output Circuit**

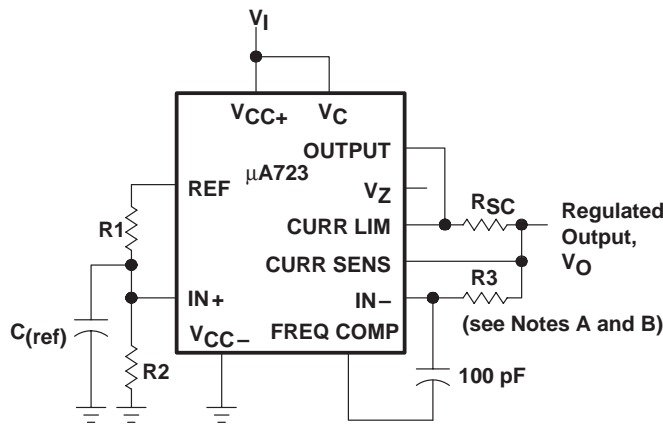
6. For Figures 3, 8, and 10, the device requires a minimum of 9 V between  $V_{CC+}$  and  $V_{CC-}$  when  $V_O$  is equal to or more positive than -9 V.

**APPLICATION INFORMATION**

**Table 2. Formulas for Intermediate Output Voltages**

<p style="text-align: center;">Outputs from 2 V to 7 V See Figures 1, 5, 6, 9, 11, 12 (4) and Note 4</p> $V_O = V_{(ref)} \times \frac{R2}{R1 + R2}$	<p style="text-align: center;">Outputs from 4 V to 250 V See Figure 7 and Note 4</p> $V_O = \frac{V_{(ref)}}{2} \times \frac{R2-R1}{R1}$ <p style="text-align: center;">R3 = R4</p>	<p style="text-align: center;">Current Limiting</p> $I_{(limit)} \approx \frac{0.65 V}{R_{SC}}$
<p style="text-align: center;">Outputs from 7 V to 37 V See Figures 2, 4, (5, 6, 9, 11, 12) and Note 4</p> $V_O = V_{(ref)} \times \frac{R1 + R2}{R2}$	<p style="text-align: center;">Outputs from -6 V to -250 V See Figures 3, 8, 10 and Notes 4 and 6</p> $V_O = -\frac{V_{(ref)}}{2} \times \frac{R1 + R2}{R1}$ <p style="text-align: center;">R3 = R4</p>	<p style="text-align: center;">Foldback Current Limiting See Figure 6</p> $I_{(knee)} \approx \frac{V_O R3 + (R3 + R4) 0.65 V}{R_{SC} R4}$ $I_{OS} \approx \frac{0.65 V}{R_{SC}} \times \frac{R3 + R4}{R4}$

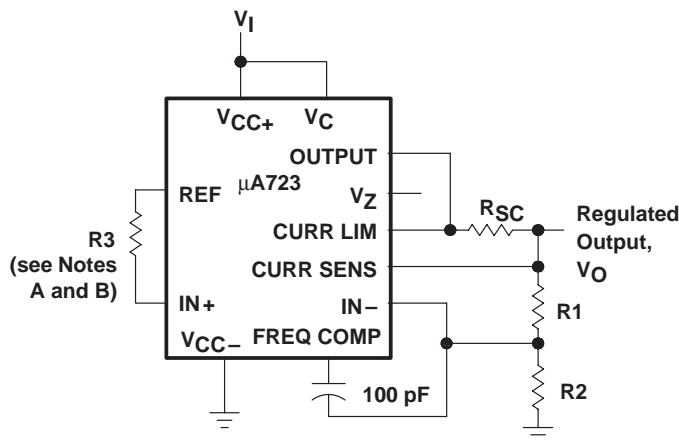
- NOTES: 4. The R1/R2 divider can be across either  $V_O$  or  $V_{(ref)}$ . If the divider is across  $V_{(ref)}$ , use figure numbers without parentheses. If the divider is across  $V_O$ , use the figure numbers in parentheses.
6. For Figures 3, 8, and 10, the device requires a minimum of 9 V between  $V_{CC+}$  and  $V_{CC-}$  when  $V_O$  is equal to or more positive than -9 V.



- NOTES: A.  $R3 = \frac{R1 \times R2}{R1 + R2}$  for minimum  $\alpha_{VO}$
- B. R3 may be eliminated for minimum component count. Use direct connection (i.e.,  $R3 = 0$ ).

**Figure 1. Basic Low-Voltage Regulator**  
**( $V_O = 2 V$  to  $7 V$ )**

APPLICATION INFORMATION



- NOTES: A.  $R3 = \frac{R1 \times R2}{R1 + R2}$  for minimum  $\alpha_{VO}$   
 B. R3 may be eliminated for minimum component count. Use direct connection (i.e.,  $R3 = 0$ ).

Figure 2. Basic High-Voltage Regulator  
( $V_O = 7\text{ V to }37\text{ V}$ )

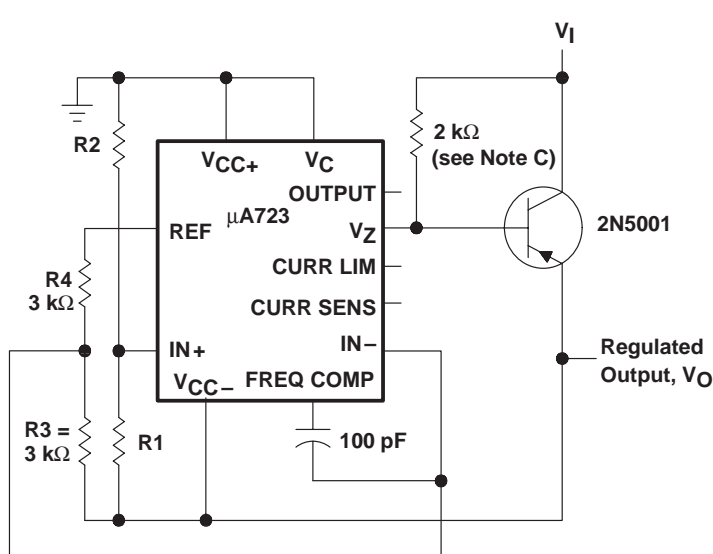


Figure 3. Negative-Voltage Regulator

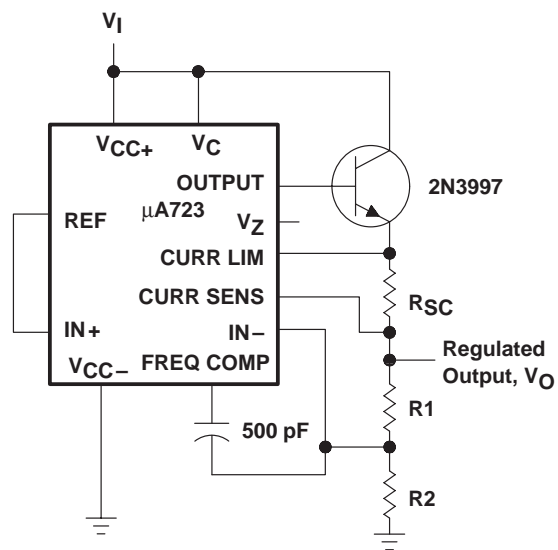


Figure 4. Positive-Voltage Regulator  
(External N-P-N Pass Terminator)

NOTE A: When 10-lead  $\mu$ A723U devices are used in applications requiring  $V_Z$ , an external 6.2-V regulator diode must be connected in series with OUTPUT.



APPLICATION INFORMATION

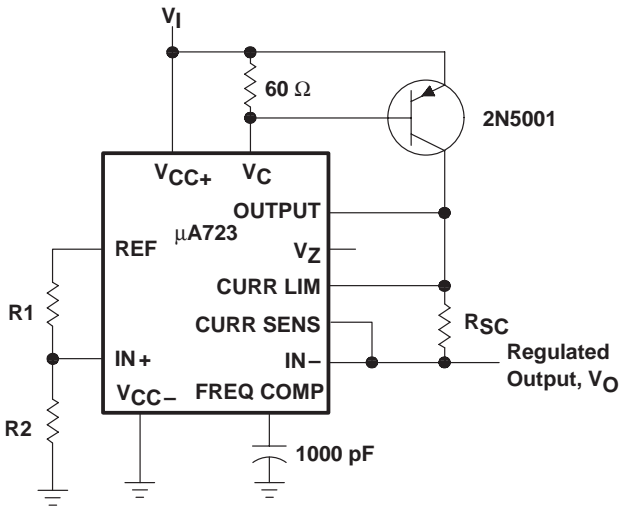


Figure 5. Positive-Voltage Regulator  
(External P-N-P Pass Transistor)

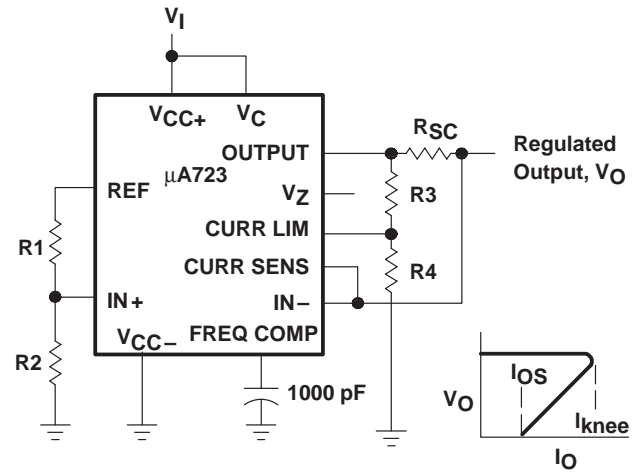
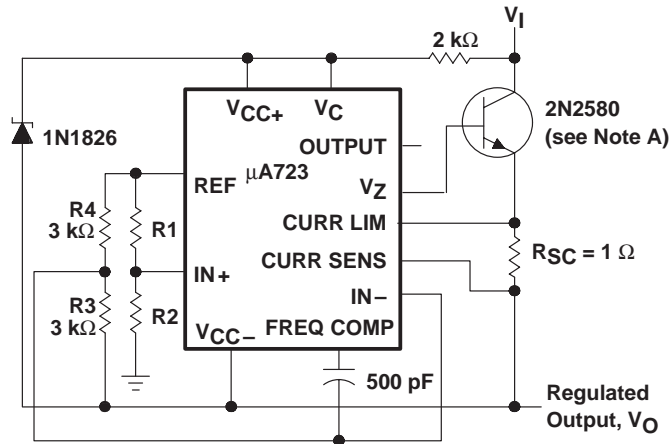


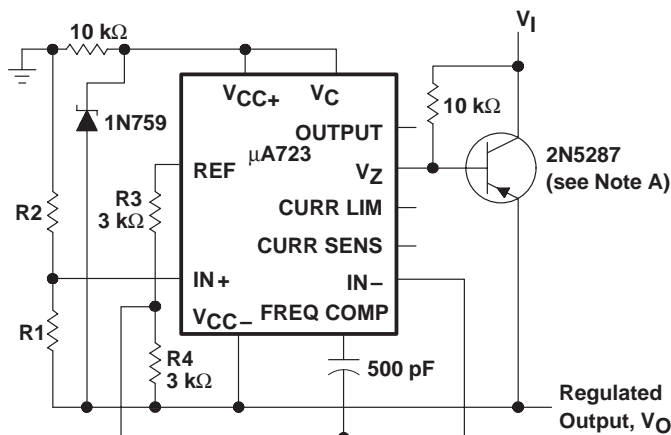
Figure 6. Foldback Current Limiting



NOTE A: When 10-lead  $\mu$ A723U devices are used in applications requiring  $V_Z$ , an external 6.2-V regulator diode must be connected in series with OUTPUT.

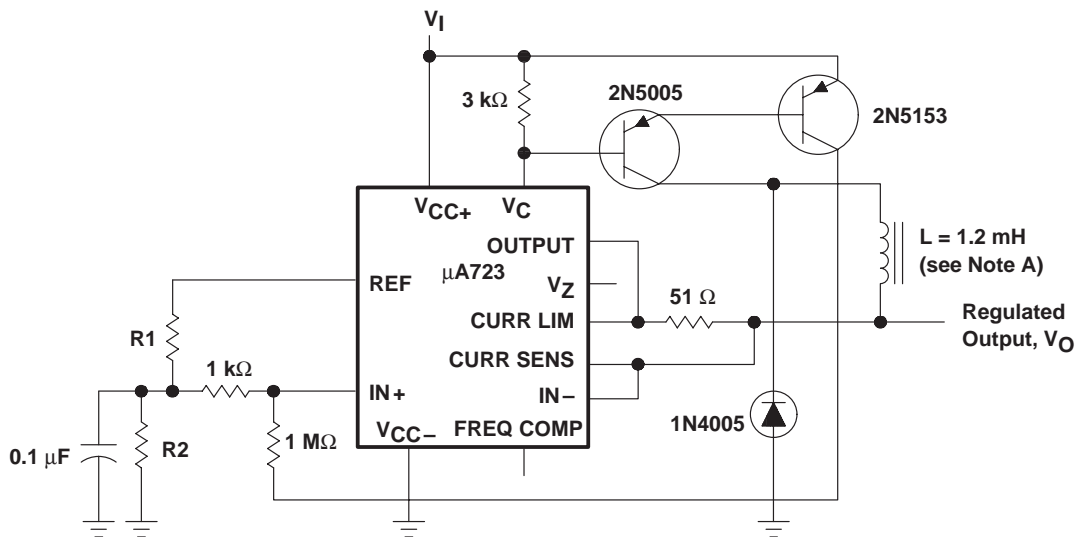
Figure 7. Positive Floating Regulator

APPLICATION INFORMATION



NOTE A: When 10-lead  $\mu$ A723U devices are used in applications requiring  $V_Z$ , an external 6.2-V regulator diode must be connected in series with OUTPUT.

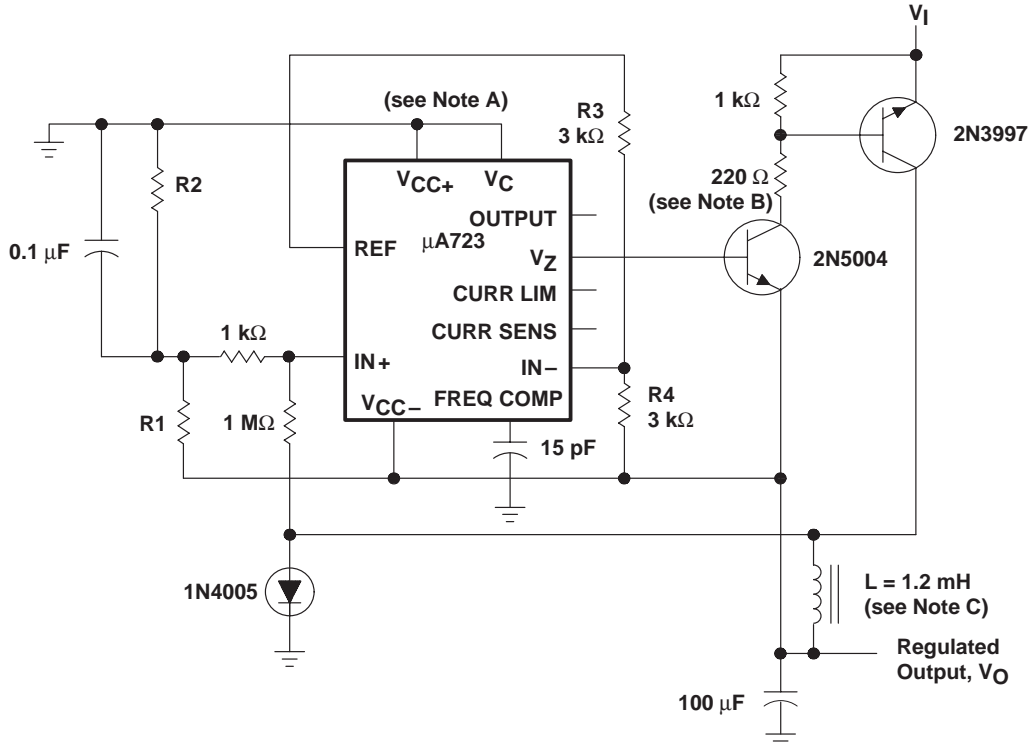
Figure 8. Negative Floating Regulator



NOTE A: L is 40 turns of No. 20 enameled copper wire wound on Ferroxcube P36/22-3B7 potted core or equivalent, with a 0.009-inch air gap.

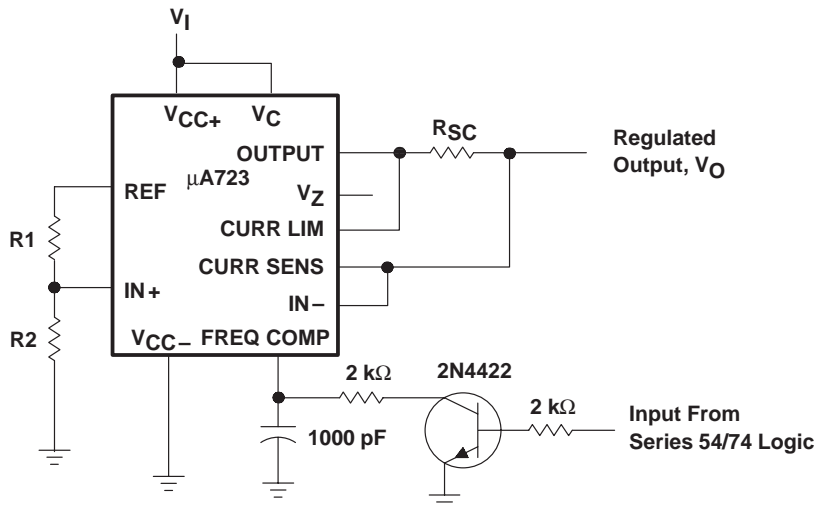
Figure 9. Positive Switching Regulator

APPLICATION INFORMATION



- NOTES: A. The device requires a minimum of 9 V between  $V_{CC+}$  and  $V_{CC-}$  when  $V_O$  is equal to or more positive than  $-9$  V.  
 B. When 10-lead  $\mu$ A723U devices are used in applications requiring  $V_Z$ , an external 6.2-V regulator diode must be connected in series with OUTPUT.  
 C. L is 40 turns of No. 20 enameled copper wire wound on Ferroxcube P36/22-3B7 potted core or equivalent, with a 0.009-inch air gap.

Figure 10. Negative Switching Regulator



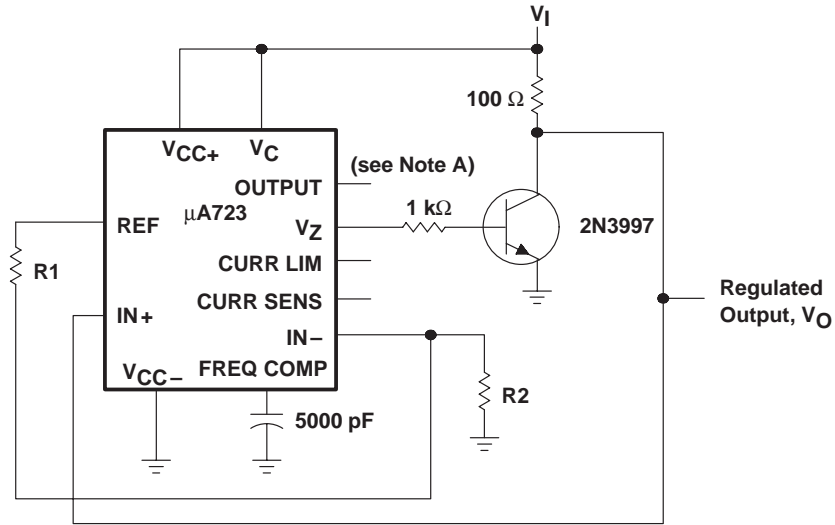
NOTE A: A current-limiting transistor can be used for shutdown if current limiting is not required.

Figure 11. Remote Shutdown Regulator With Current Limiting

# $\mu$ A723C, $\mu$ A723M, $\mu$ A723Y PRECISION VOLTAGE REGULATORS

SLVS057C – AUGUST 1972 – REVISED NOVEMBER 1996

## APPLICATION INFORMATION



NOTE A: When 10-lead  $\mu$ A723U devices are used in applications requiring  $V_Z$ , an external 6.2-V regulator diode must be connected in series with OUTPUT.

**Figure 12. Shunt Regulator**

## IMPORTANT NOTICE

Texas Instruments and its subsidiaries (TI) reserve the right to make changes to their products or to discontinue any product or service without notice, and advise customers to obtain the latest version of relevant information to verify, before placing orders, that information being relied on is current and complete. All products are sold subject to the terms and conditions of sale supplied at the time of order acknowledgement, including those pertaining to warranty, patent infringement, and limitation of liability.

TI warrants performance of its semiconductor products to the specifications applicable at the time of sale in accordance with TI's standard warranty. Testing and other quality control techniques are utilized to the extent TI deems necessary to support this warranty. Specific testing of all parameters of each device is not necessarily performed, except those mandated by government requirements.

CERTAIN APPLICATIONS USING SEMICONDUCTOR PRODUCTS MAY INVOLVE POTENTIAL RISKS OF DEATH, PERSONAL INJURY, OR SEVERE PROPERTY OR ENVIRONMENTAL DAMAGE ("CRITICAL APPLICATIONS"). TI SEMICONDUCTOR PRODUCTS ARE NOT DESIGNED, AUTHORIZED, OR WARRANTED TO BE SUITABLE FOR USE IN LIFE-SUPPORT DEVICES OR SYSTEMS OR OTHER CRITICAL APPLICATIONS. INCLUSION OF TI PRODUCTS IN SUCH APPLICATIONS IS UNDERSTOOD TO BE FULLY AT THE CUSTOMER'S RISK.

In order to minimize risks associated with the customer's applications, adequate design and operating safeguards must be provided by the customer to minimize inherent or procedural hazards.

TI assumes no liability for applications assistance or customer product design. TI does not warrant or represent that any license, either express or implied, is granted under any patent right, copyright, mask work right, or other intellectual property right of TI covering or relating to any combination, machine, or process in which such semiconductor products or services might be or are used. TI's publication of information regarding any third party's products or services does not constitute TI's approval, warranty or endorsement thereof.