

# SINTONIZADOR USB ISDB PERU MANUAL INSTRUCCIONES

## 0. Requerimientos del sistema

Sistema operativo: WinXP/Vista

CPU: INTELL 1.2GHZ/AMD1.5GHZ o anteriores; puerto de memoria USB 2.0 de mas de 128 MB, espacio libre de mas de 100MB.

## 1. INSTALAR

1.1 Conecte el dispositivo en el puerto USB 2.0.

1.2 Coloque el disco CD.

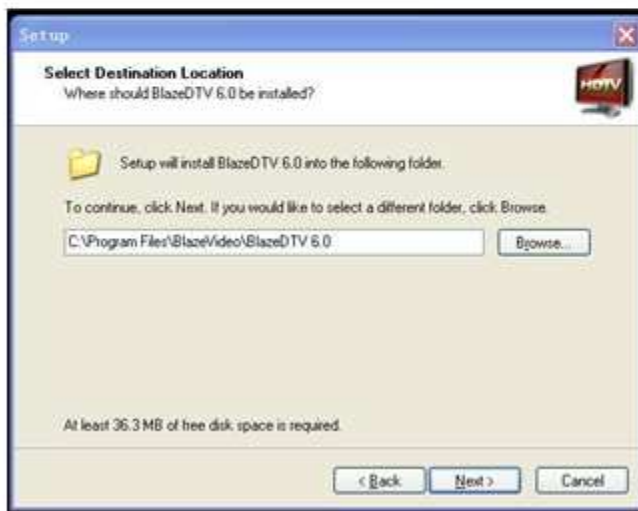


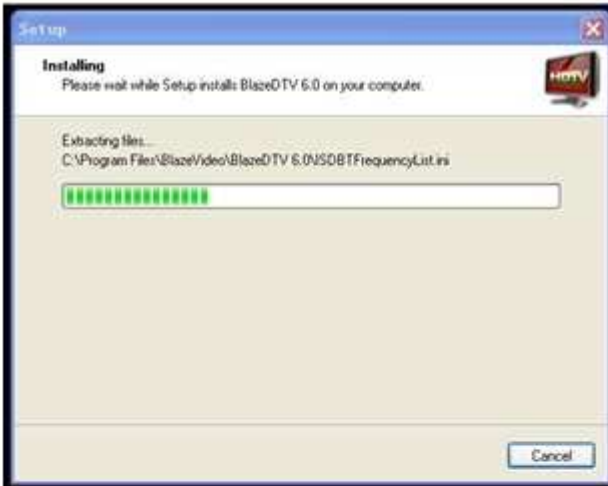
1.3 Seleccione INSTALL para instalar el controlador para su computador.

1.4 Para instalar el Microsoft.NET framework 1.1



1.5 Instale el reproductor



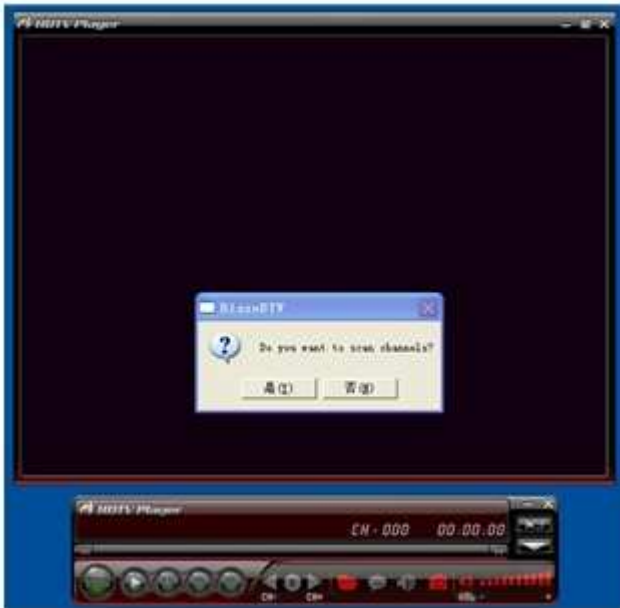


### 1.6 Escriba la información en la interfase de certificación

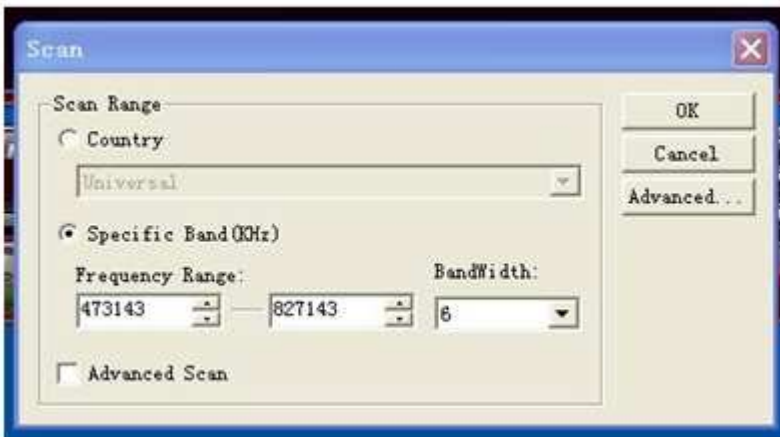
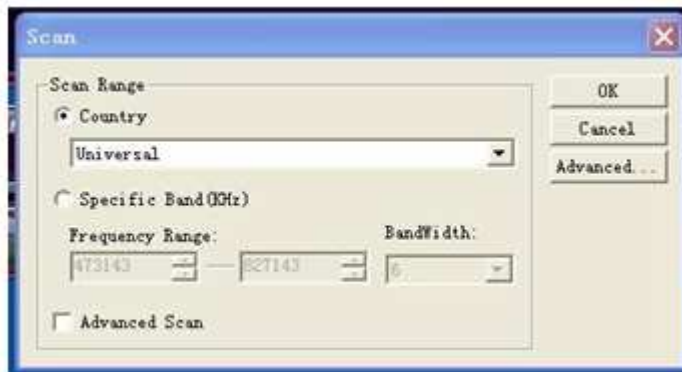


## 2. Abra el reproductor

### 2.1 En primer lugar, el reproductor buscara un canal



### 2.2 Seleccione el país y busque un solo canal



### 2.3 Seleccionar TV



### 2.4 Seleccionar los archivos a reproducir



### 2.5 Seleccionar el color y brillo



### 2.6 Seleccionar el audio



### 2.7 Seleccionar el zoom



## 2.8 Seleccionar el formato de despliegue



## 2.9 Reproduciendo



2.10 Use el control remoto para aumentar o disminuir el volumen (VOL.+, VOL.-), CH+, CH-, ir al zoom, ir al canal usando los números, colocar en mudo, apagar.

## 3. Accesorios

### 3.1 Antena

### 3.2 CD de controladores

### 3.3 Control remoto

### 3.4 Manual del usuario

# PERU ISDB USB Dongle Instruction MANUAL

## 0. System requirment:

OS: winxp/vista CPU: INTEL1.2GHZ / AMD 1.5 GHZ OR ABOVE, USB2.0 PORT MEMORY more than 128MB, free space more than 100MB

## 1. Install

1.1 Plug in the dongle into the usb2.0 port

1.2 Input the CD disk



1.3 Select theINSTALL to install the driver to your computer.

1.4 To install the Microsoft .NET Framework 1.1

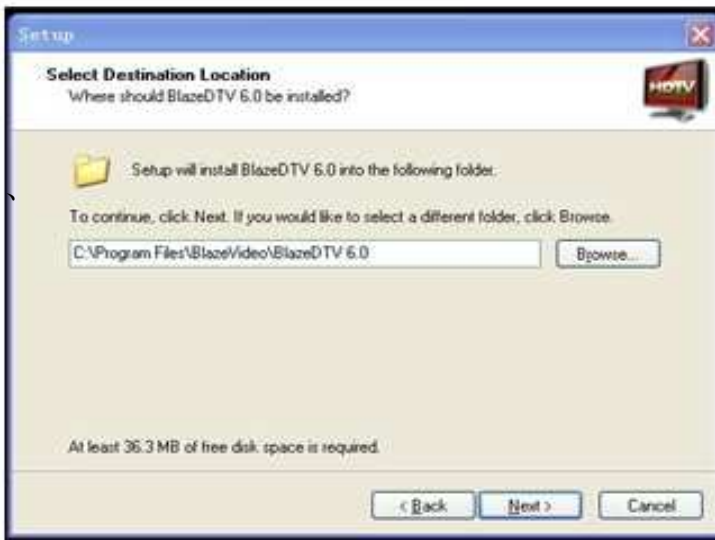


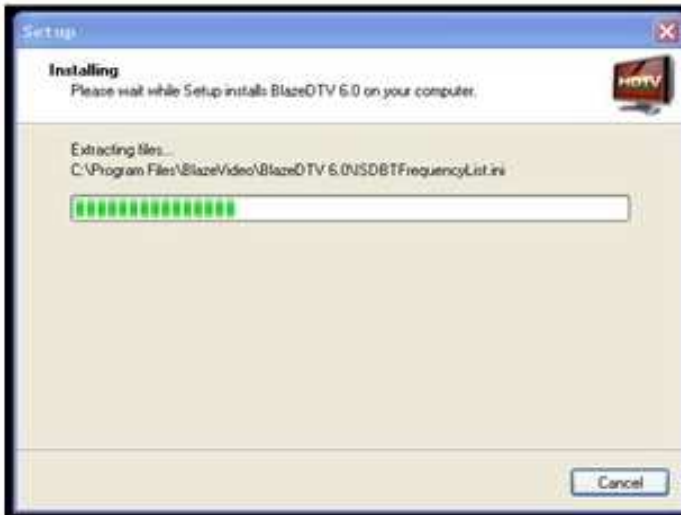


1.5 Install the player:







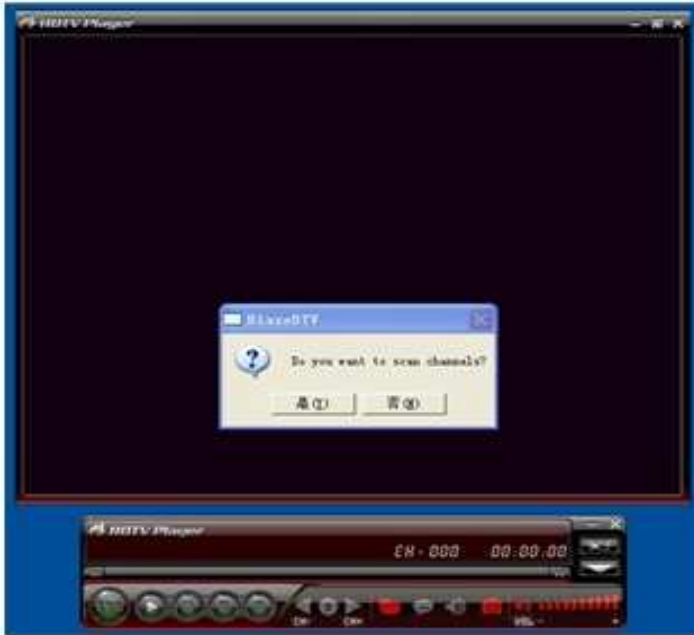


1.6 Type in the information into the certification interface.



2. Open the player

2.1 The first time, the player attentions to scan the channel.



2.2 To setup the country and channel to search the single





### 2.3 Setting the TV .



### 2.4 Setting the playing files



### 2.5 Setting the color and blightness



### 2.6 Setting the sound



## 2.7 Setting the zoom



## 2.8 Setting display format



## 2.9 Playering



2.10 Use the remote control to do the Vol+ , Vol-, CH+, CH-, Zoom, Channel Number, Mute, Power off, ect function.

### 3. Accessories

3.1 Antenna,

3.2 CD Drivers disk,

3.3 Remote control,

3.4 User manual

