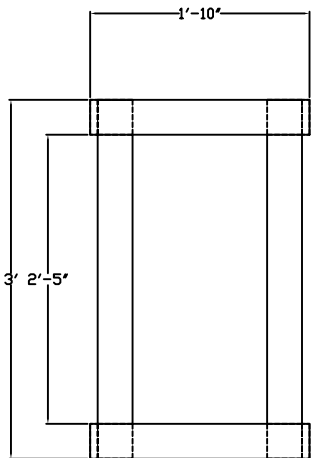
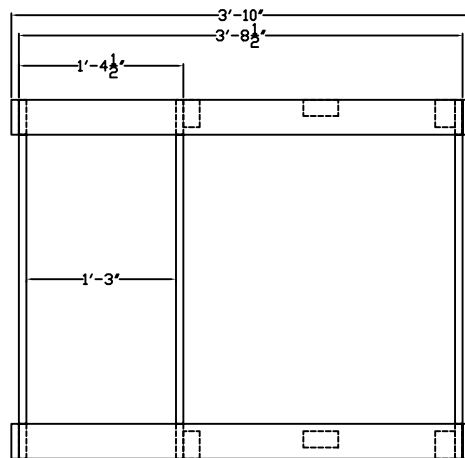


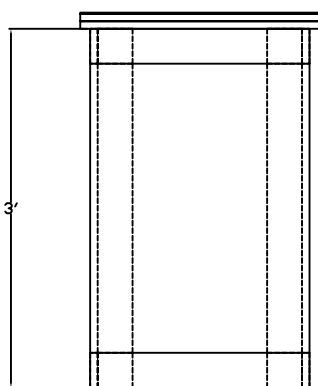
FRAME - TOP & BOTTOM
MAKE 2 EACH FROM 1X4
PINE OR FIR, OR 3.5"
WIDE STRIPS OF 3/4"
PLYWOOD
ASSEMBLE USING #6
POWER-DRIVE
WOODSCREWS



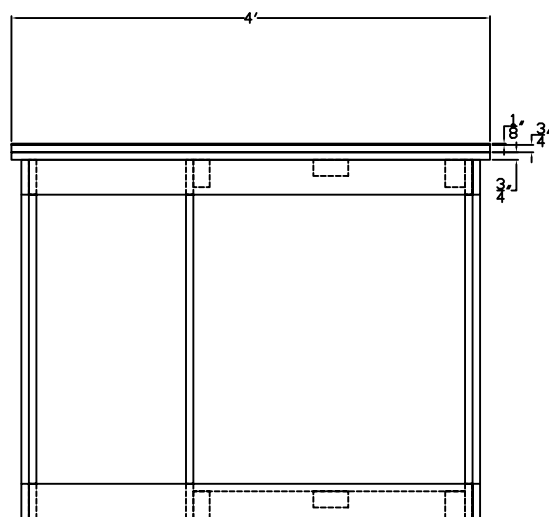
ENDFRAME
MAKE FROM 1X4 PINE
OR FIR, OR 3.5" WIDE
STRIPS OF 3/4" PLYWOOD
ASSEMBLE USING #6
POWER-DRIVE
WOODSCREWS



FRAME - FRONT VIEW
MAKE FROM 1X4 PINE
OR FIR, OR 3.5" WIDE
STRIPS OF 3/4" PLYWOOD
ASSEMBLE USING #6
POWER-DRIVE
WOODSCREWS



END VIEW
COVER BACK & SIDES
WITH 3/4" PARTICLE
BOARD OR PLYWOOD



FRONT VIEW
MAKE TOP FROM 2 LAYERS OF 3/4" PARTICLE
BOARD OR MDF, COVERED WITH 1/8" MASONITE
WEAR SURFACE
MAKE INNER SHELF FROM 3/4" MATERIAL SIMILAR
TO THAT USED FOR TOP
ADD A SECOND INTERNAL SHELF AS AN OPTION
(ADDS STIFFNESS TO BENCH AS WELL AS
EXTRA STORAGE)