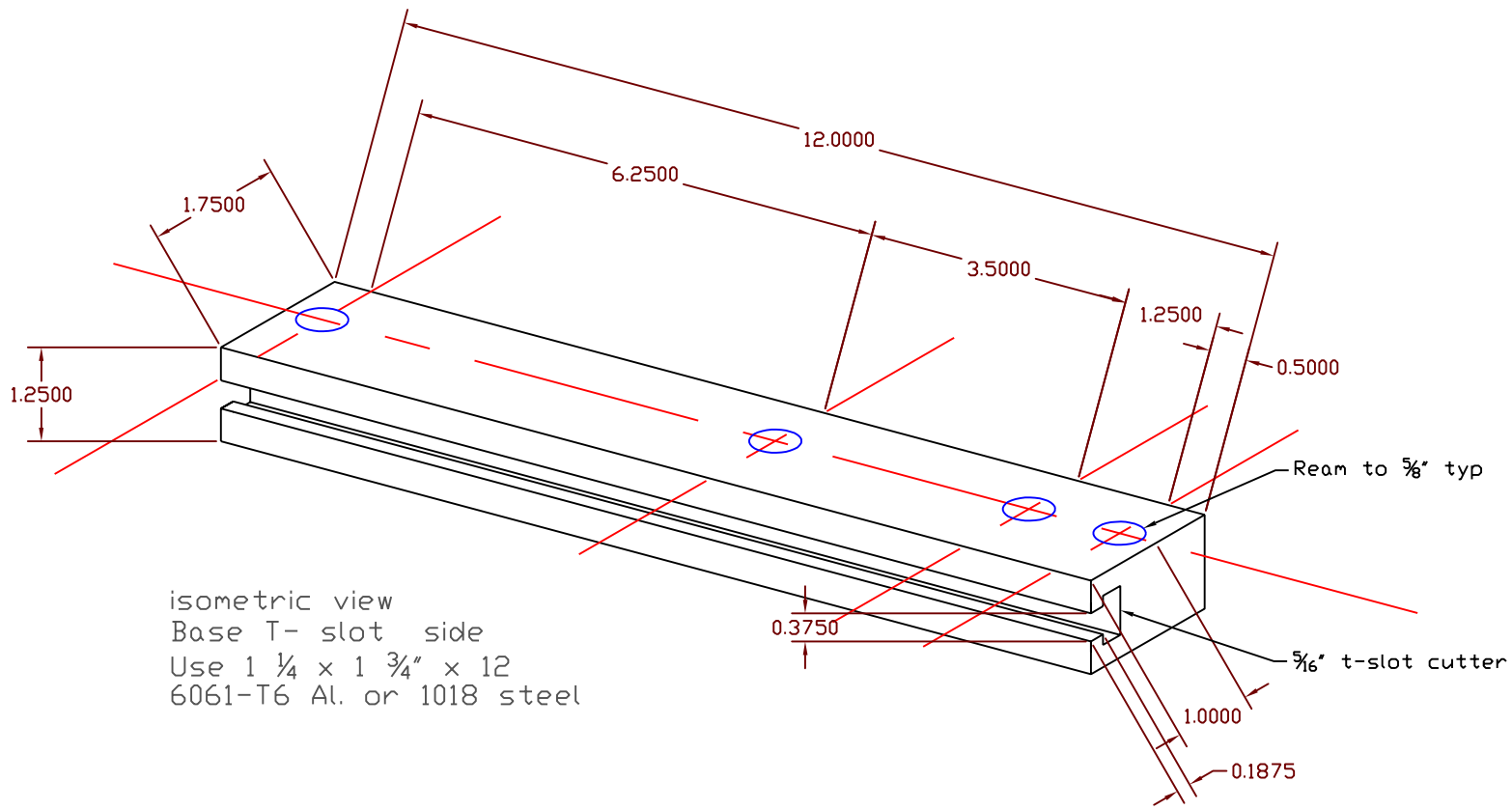
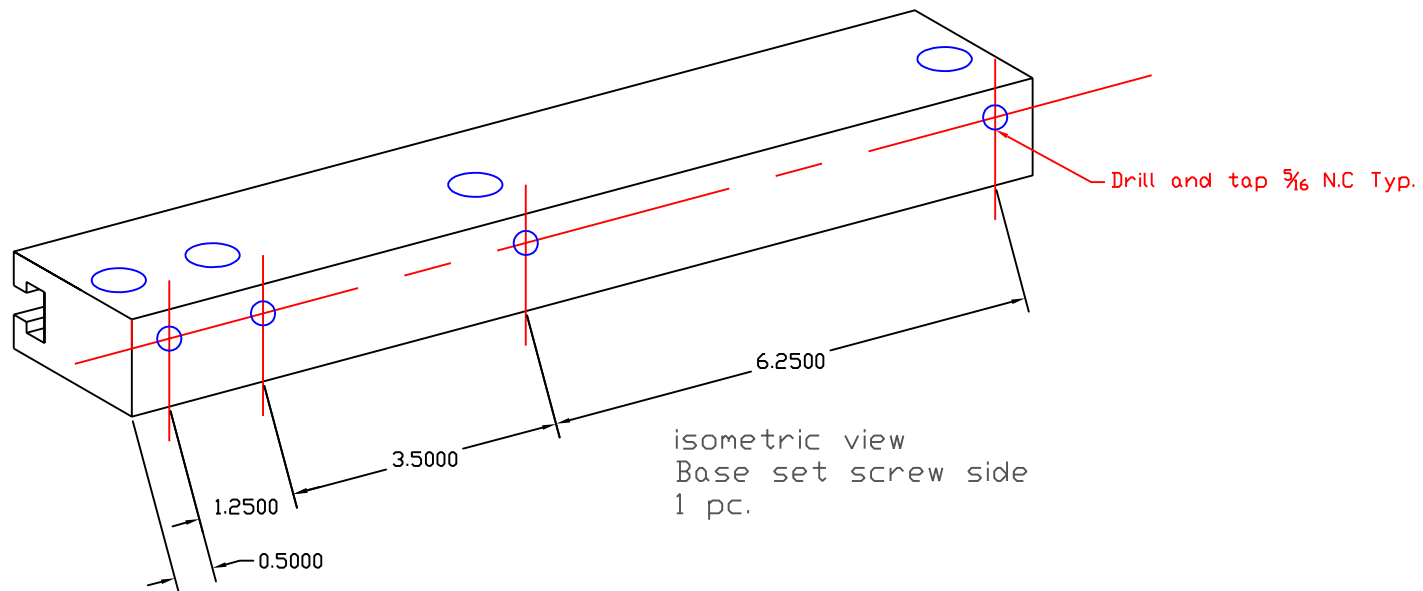


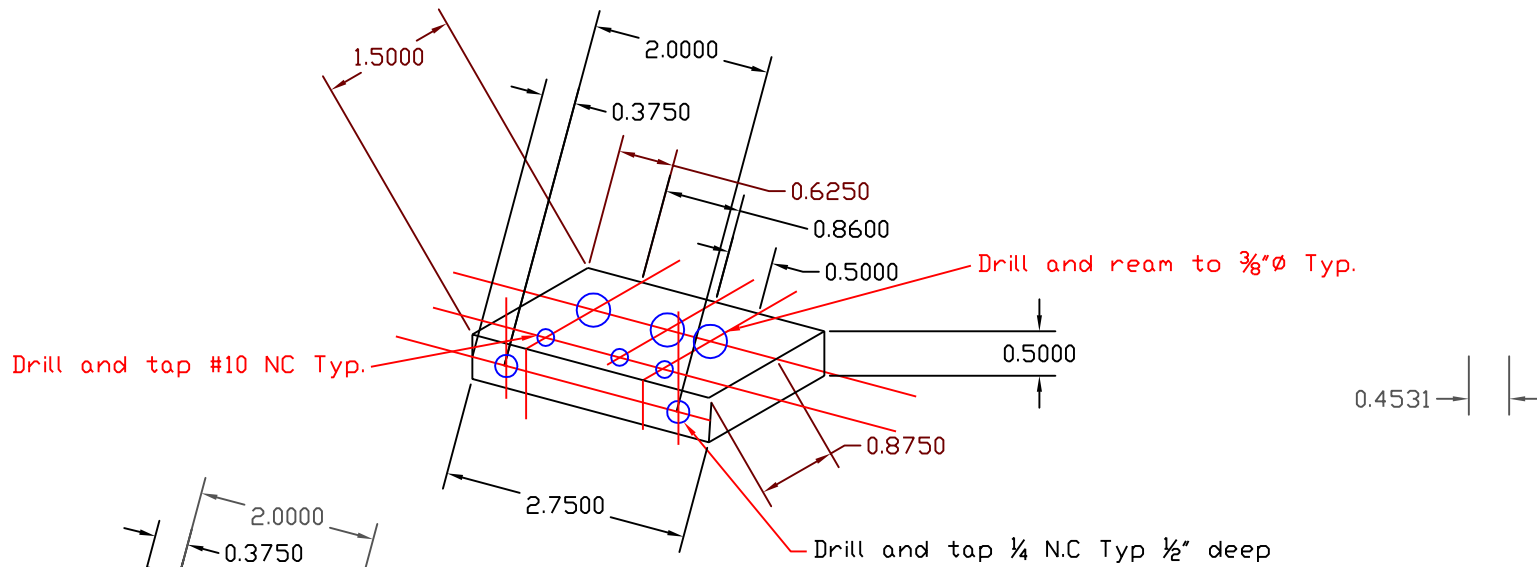
Universal sight mounting fixture



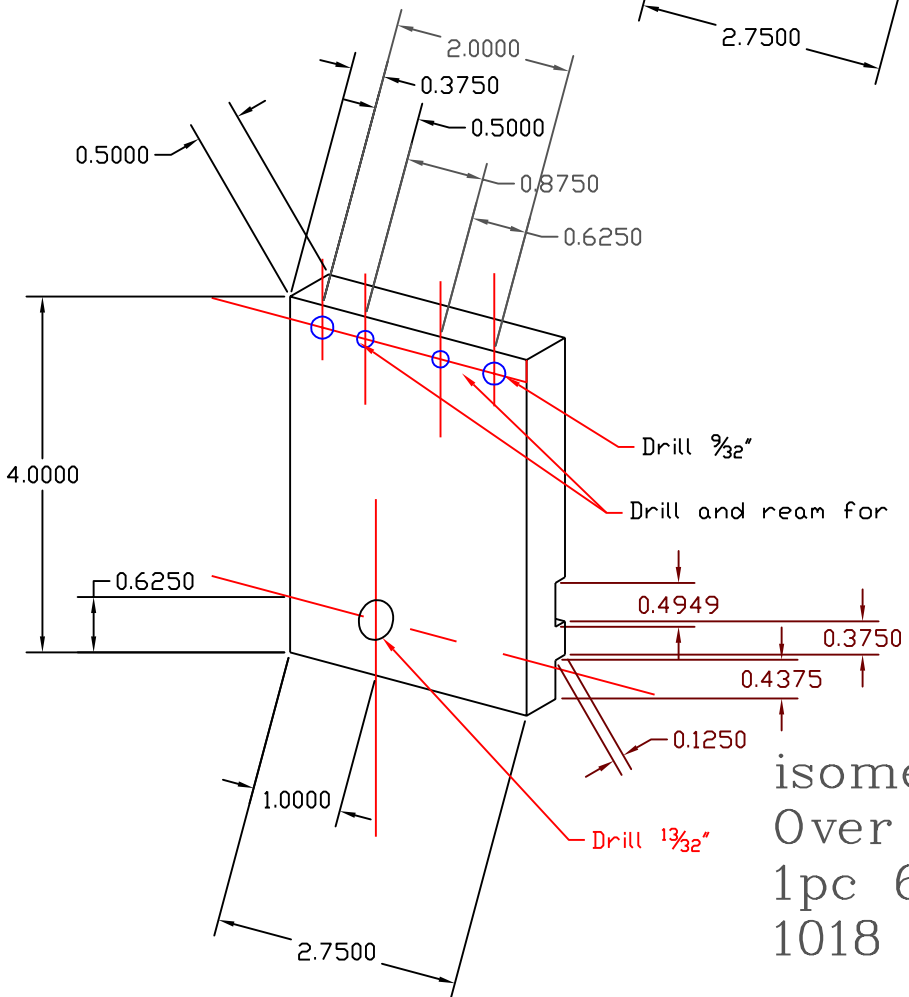
isometric view
 Base T- slot side
 Use 1 1/4 x 1 3/4 x 12
 6061-T6 Al. or 1018 steel



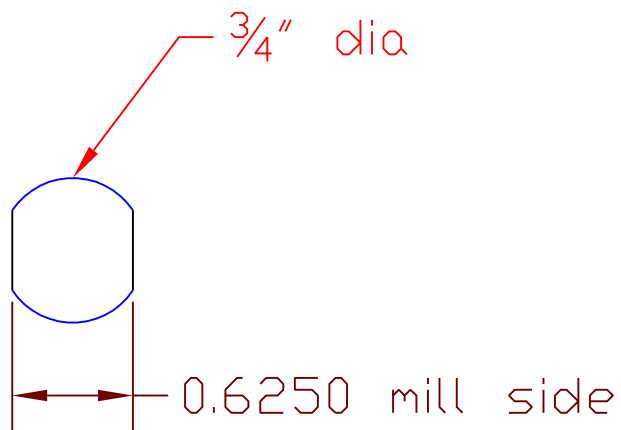
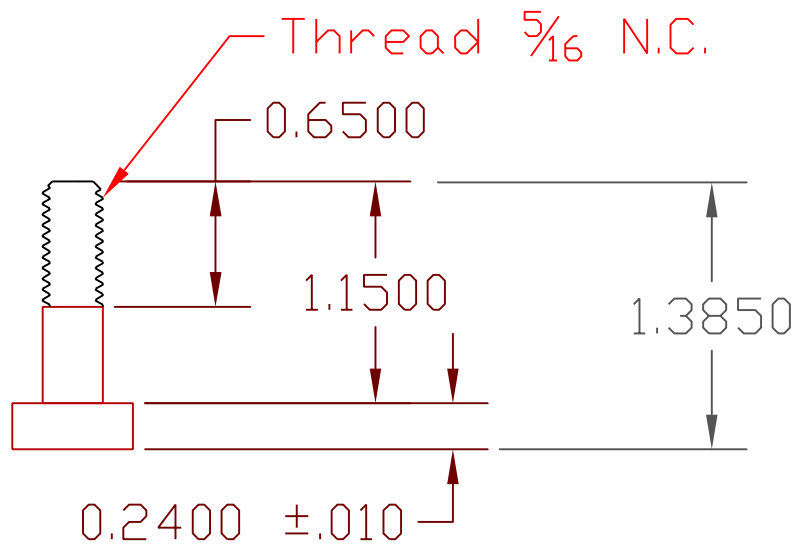
isometric view
 Base set screw side
 1 pc.



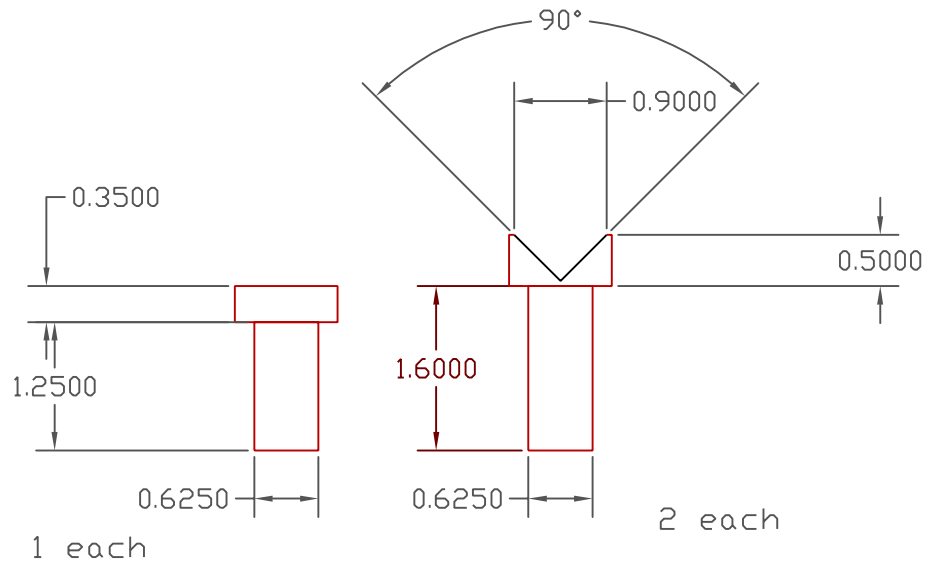
isometric view
 Over arm drill
 bushing holder
 1pc 6061-T6 Al. or
 1018 steel



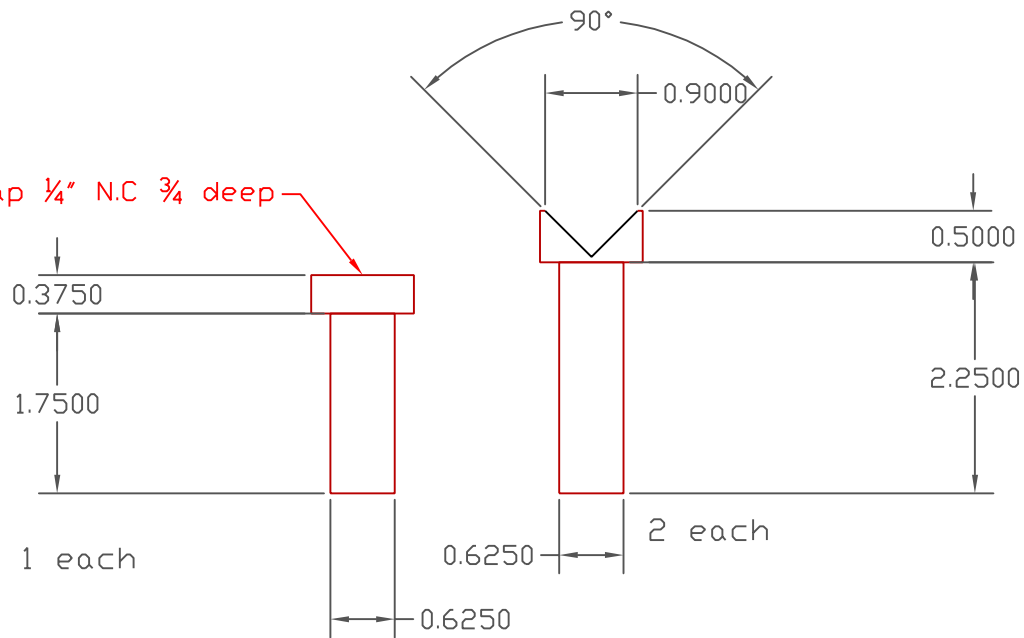
isometric view
 Over arm bracket
 1pc 6061-T6 Al. or
 1018 steel



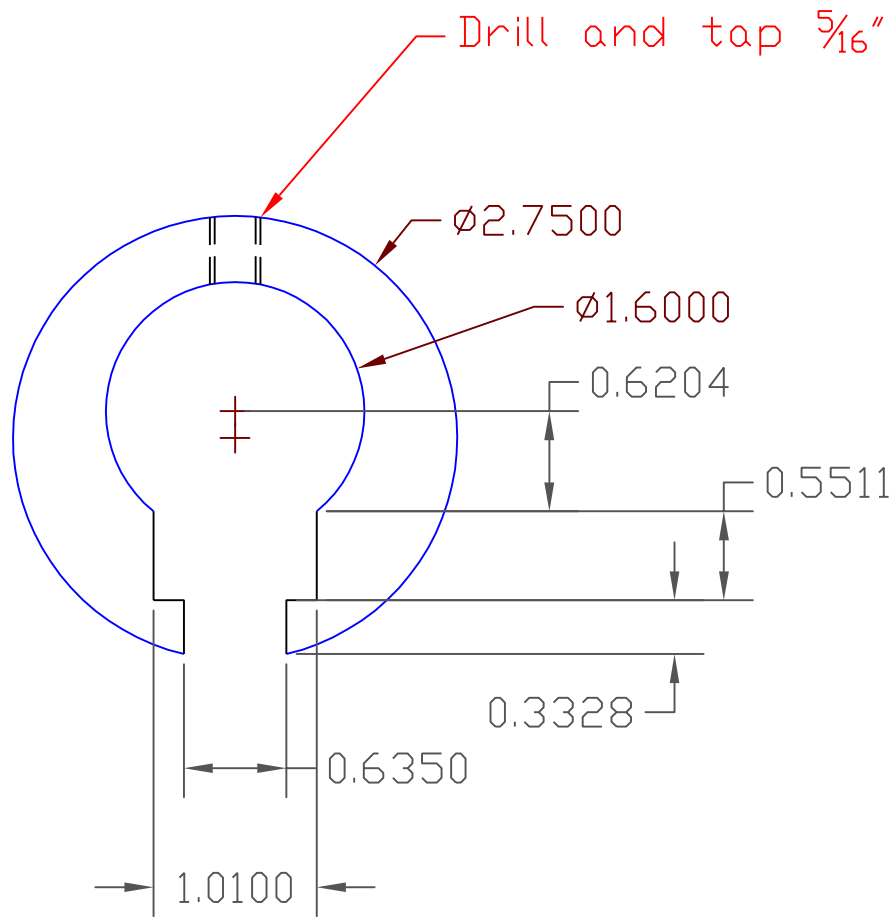
T-bolt $\frac{5}{16}$ " N.C. 3 pcs.



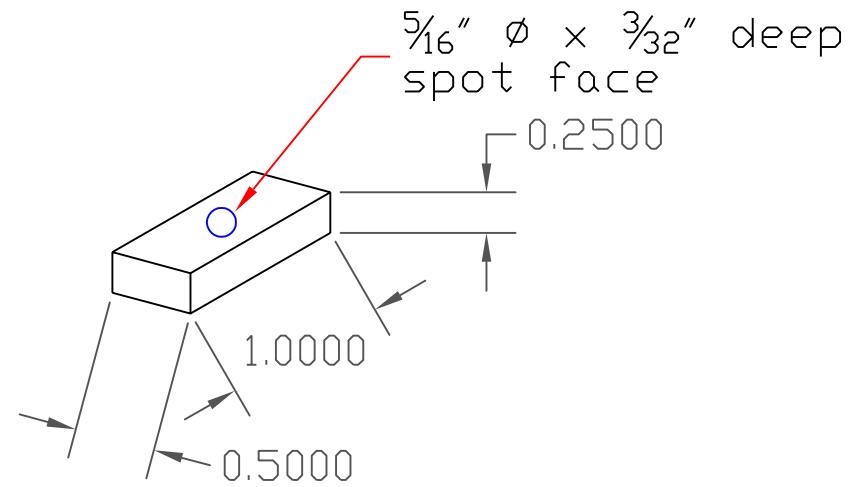
Drill and tap $\frac{1}{4}$ " N.C $\frac{3}{4}$ deep



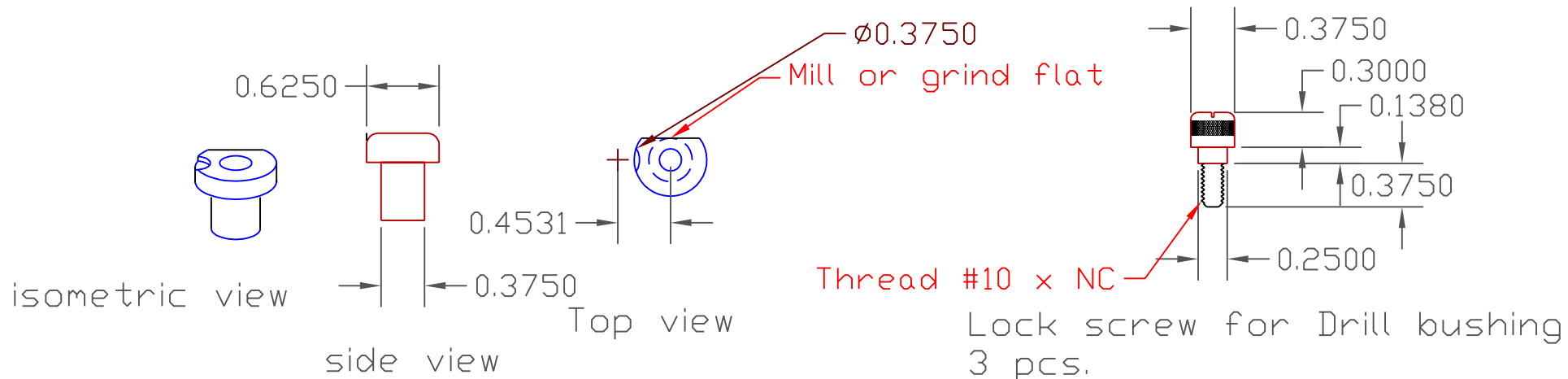
vee and flat gun rest
all use 1" ϕ 01 to W1 tool steel



C-Clamp
 $\frac{5}{8}$ " wide 6061 Al-T6
 2 pcs.



Pad Aluminum or Brass
 2 pcs.



Drill or Tap bushing 1 for each size tap
 □-1 or W-1 tool steel hard after tapping
 Also see www.mcmastercarr.com for off
 the shelf busings

Parts list not list and not shown on the drawing

1. $\frac{5}{16}$ N.C. nuts 3 pcs
2. $\frac{5}{16}$ " SAE washers 3 pcs
3. $\frac{5}{16}$ " N.C x 2" square head set screw Flat bottom 3 pcs.
4. $\frac{5}{16}$ " N.C x 1" square head set screw Flat bottom 4 pcs.
5. $\frac{1}{4}$ " N.C. x 1 AHCS
6. $\frac{3}{16}$ x $\frac{3}{4}$ " Dowel pins 2 pcs.