

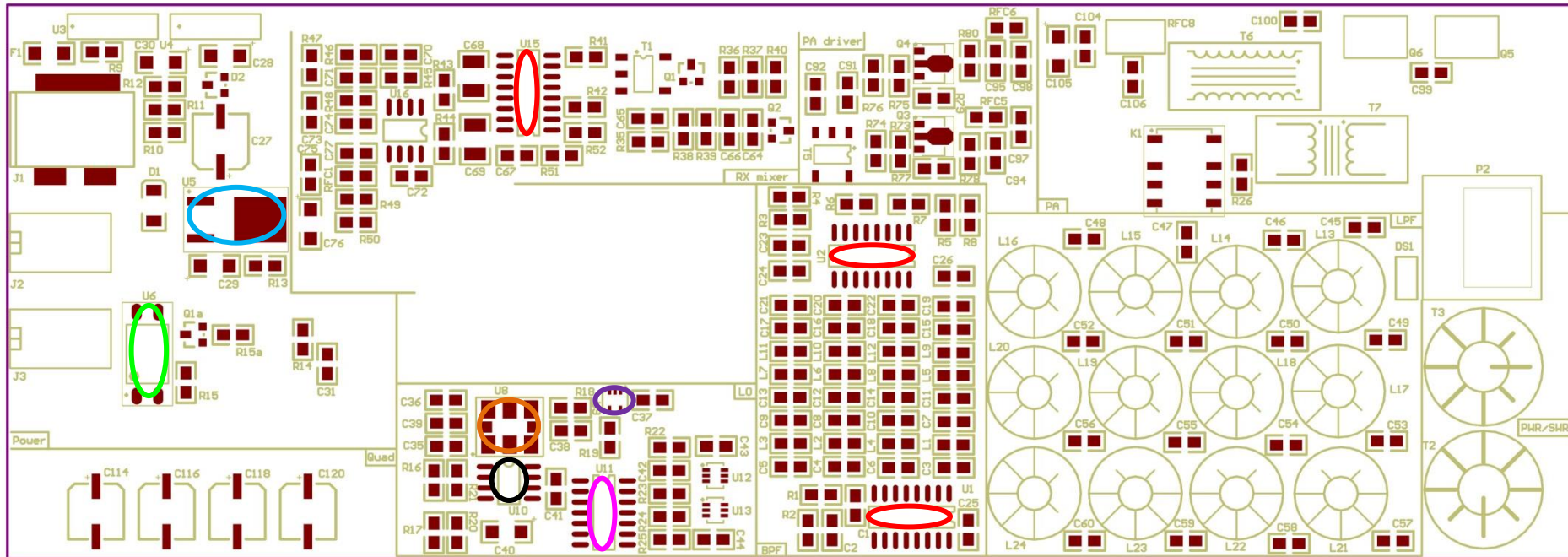
# RF-Board Bottom / Unterseite

**SN74CBT3253C (U1,2,15)**    **LF33CDT**    **UA78M33 (U5)**    **ISP817XSM (U6)**

3 pieces/Stück

1 pieces/Stück

1 pieces/Stück



**SI570 (U8)**    **74LVC1G17 (U9)**    **MCP9801 (U10)**    **74LCX74M (U11)**

1 pieces/Stück

1 pieces/Stück

1 pieces/Stück

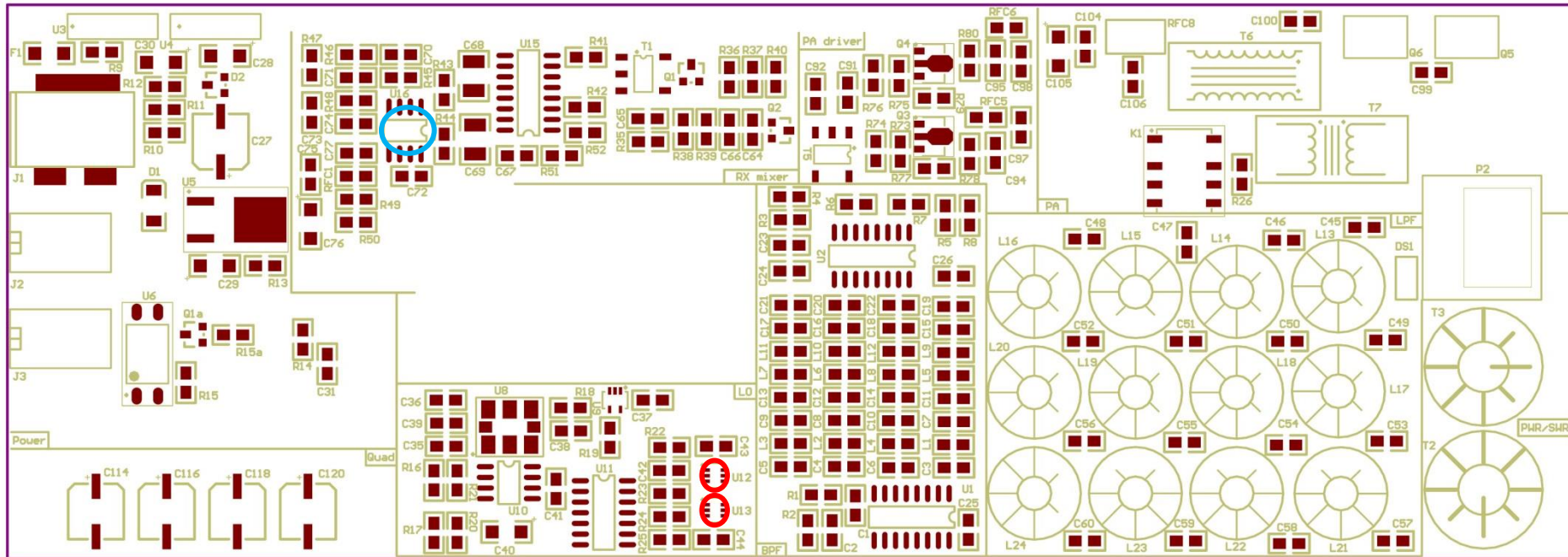
1 pieces/Stück

# RF-Board Bottom / Unterseite

**SN74LVC2G17 (U12,13)**    **OPA2350UA (U16)**

2 pieces/Stück

1 pieces/Stück

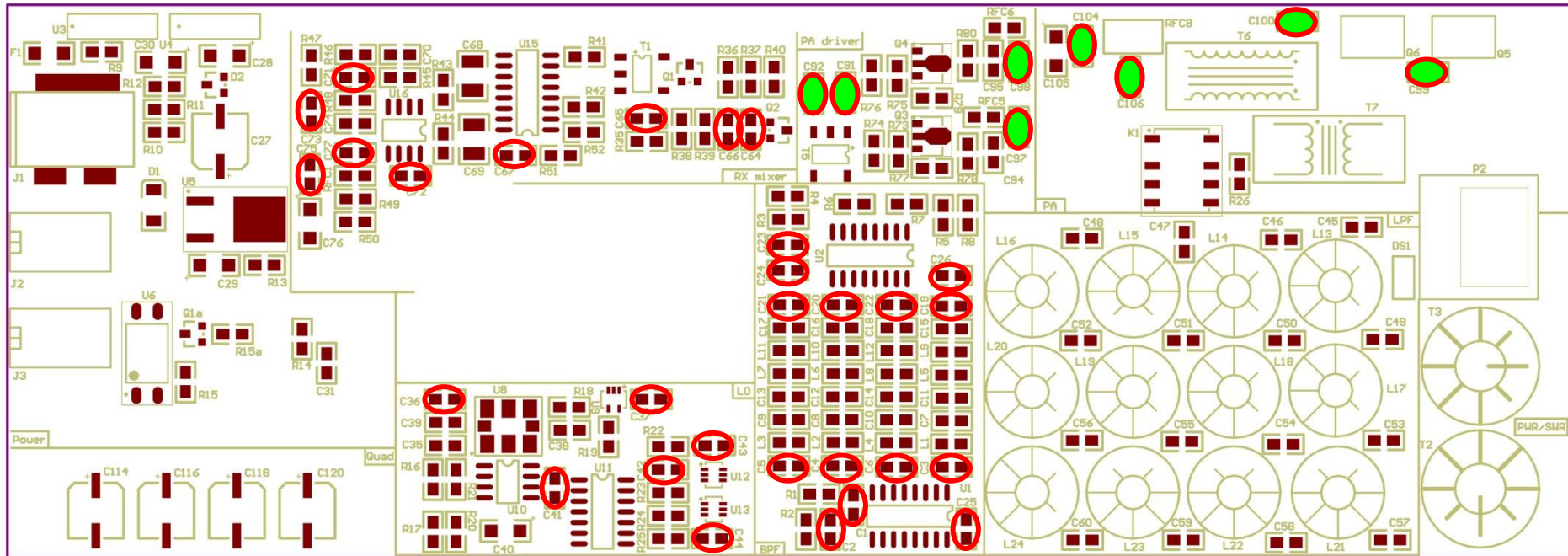


# RF-Board Bottom / Unterseite

**100nF**

37 pieces/Stück

 = 100V Typen



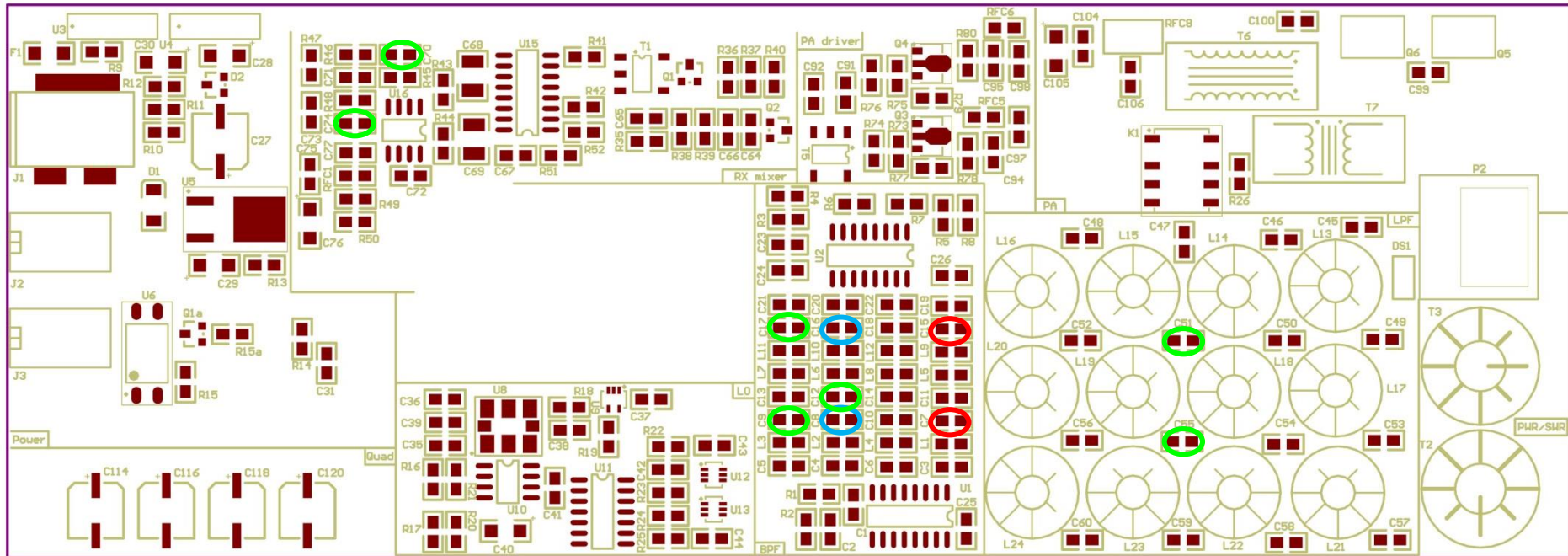


# RF-Board Bottom / Unterseite

**1.5nF**  
2 pieces/Stück

**820pF**  
2 pieces/Stück

**390pF**  
7 pieces/Stück

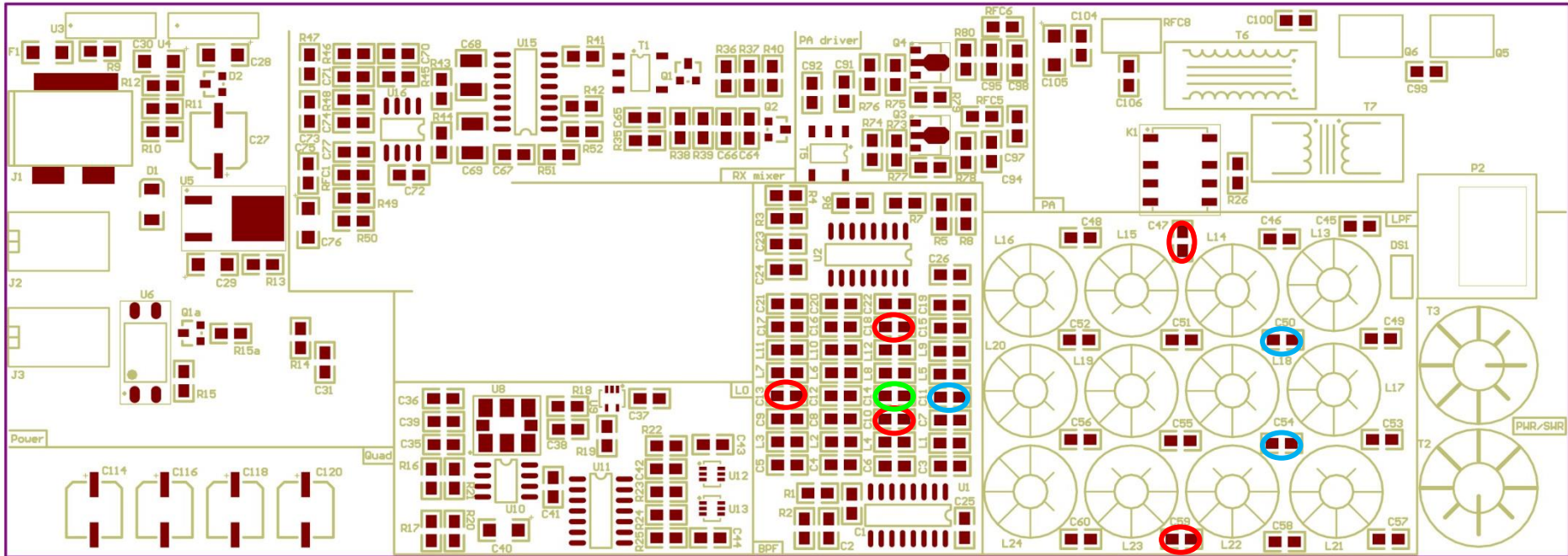


## RF-Board Bottom / Unterseite

**180pF**  
5 pieces/Stück

**680pF**  
3 pieces/Stück

**82pF**  
1 pieces/Stück



## RF-Board Bottom / Unterseite

10nF

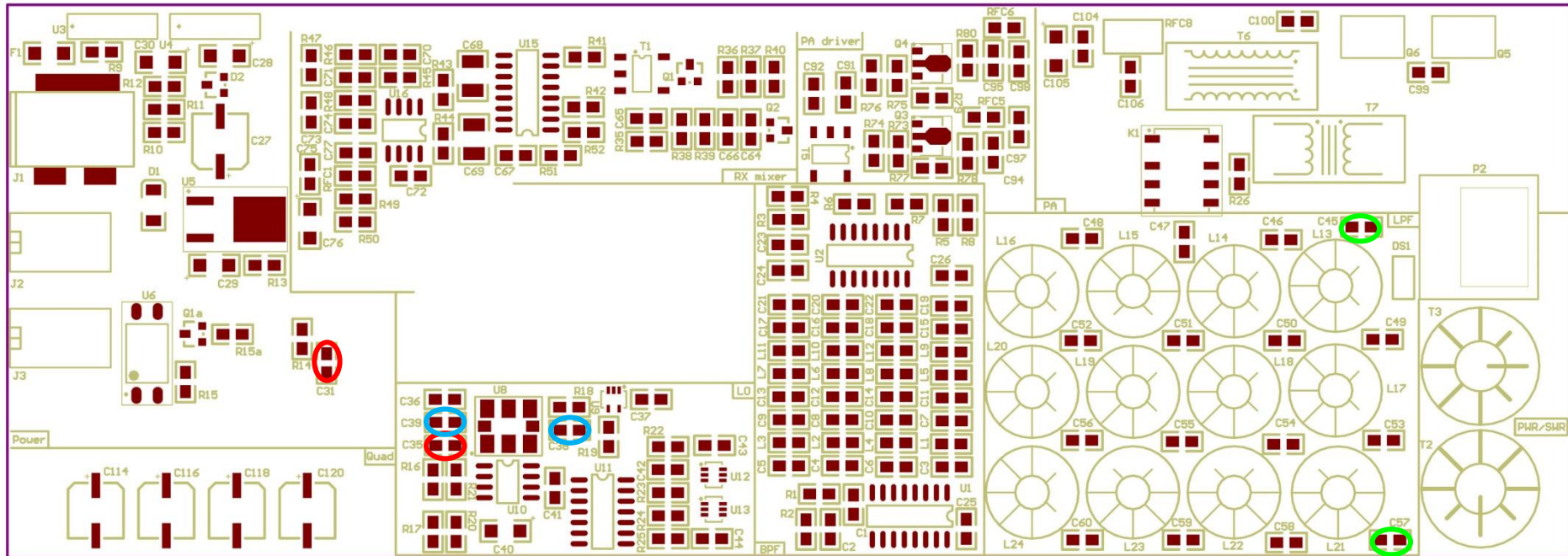
**2 pieces/Stück**

10pF

**2 pieces/Stück**

470pF

**2 pieces/Stück**



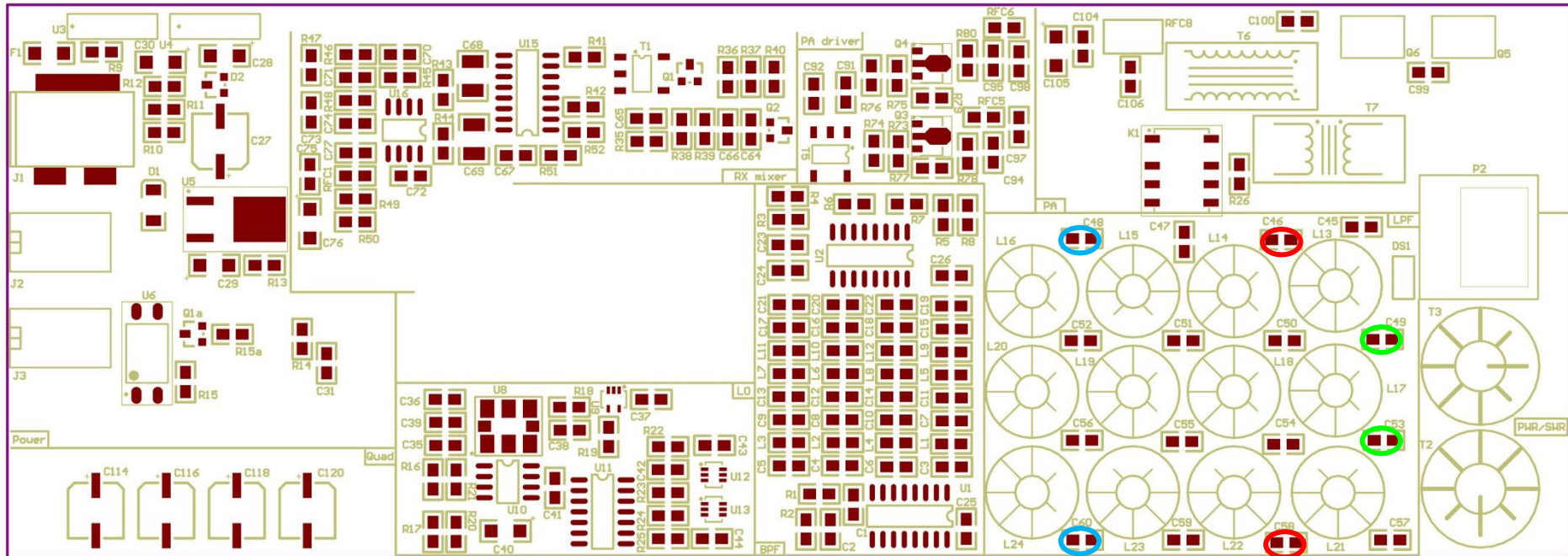


# RF-Board Bottom / Unterseite

**270pF**  
2 pieces/Stück

**100pF**  
2 pieces/Stück

**1.2nF**  
2 pieces/Stück

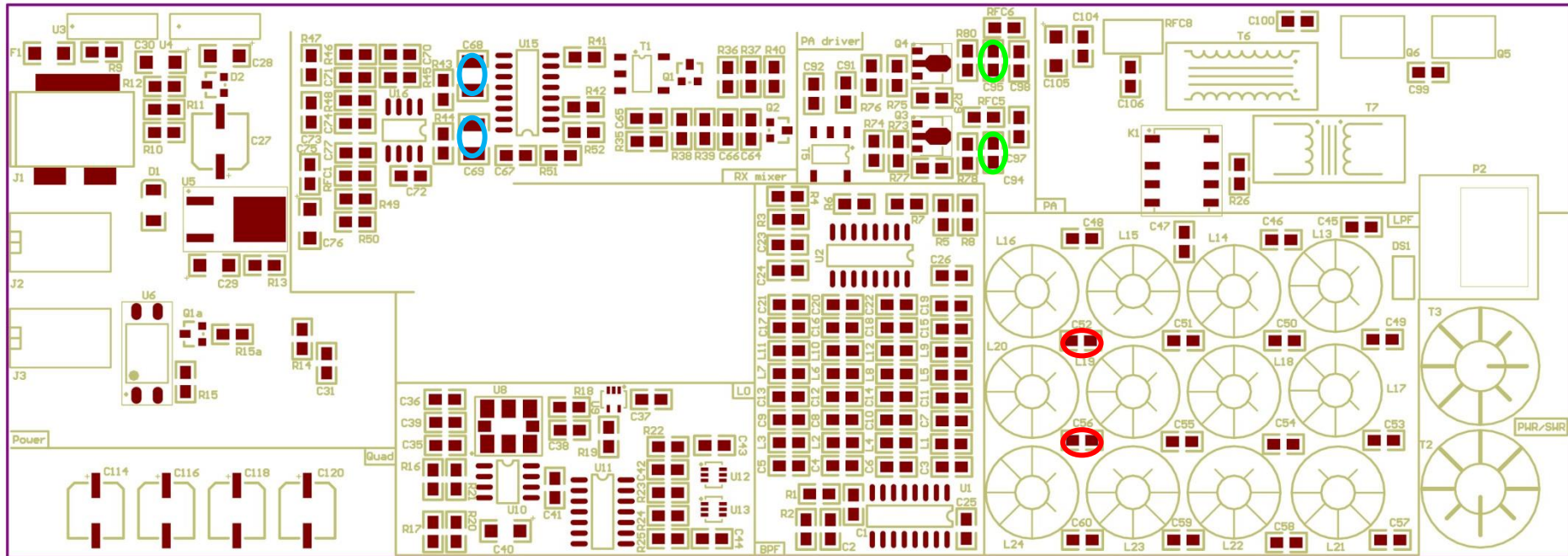


# RF-Board Bottom / Unterseite

**220pF**  
2 pieces/Stück

**22nF**  
2 pieces/Stück

**47nF**  
2 pieces/Stück





# RF-Board Bottom / Unterseite

**100 Ohm**

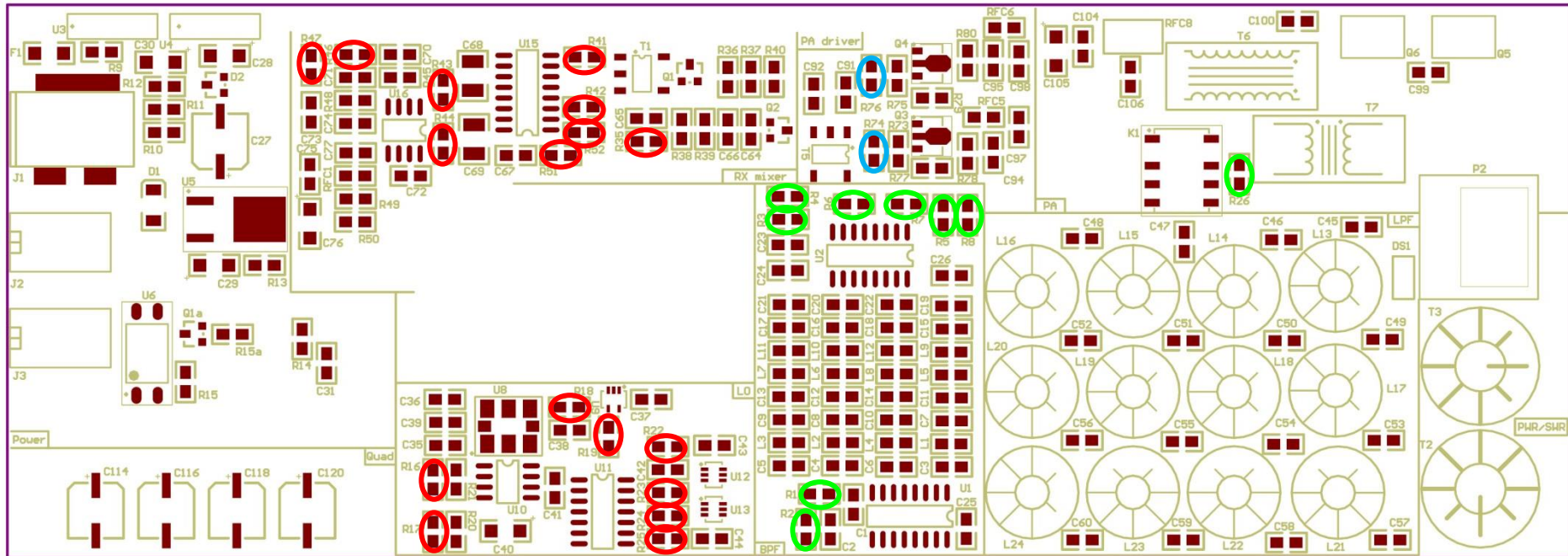
17 pieces/Stück

**470 Ohm**

2 pieces/Stück

**0 Ohm**

9 pieces/Stück



# RF-Board Bottom / Unterseite

**4.7 K**

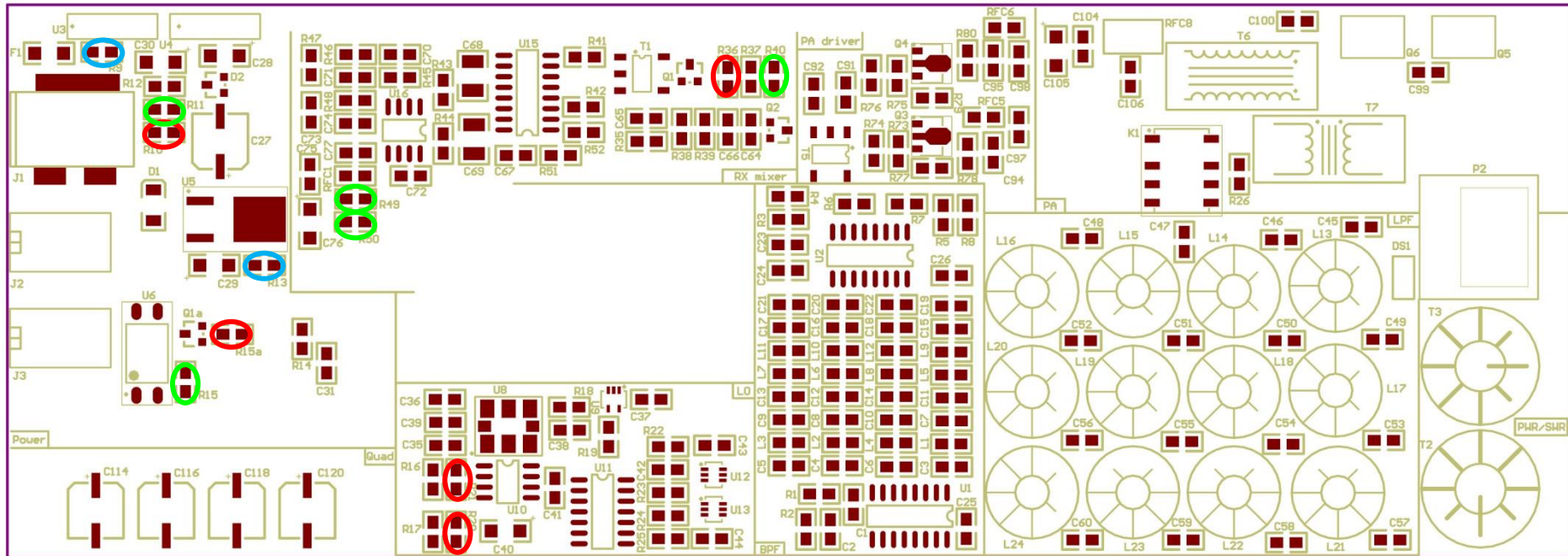
5 pieces/Stück

**15 K**

2 pieces/Stück

**1 K**

5 pieces/Stück



# RF-Board Bottom / Unterseite

**10 Ohm**

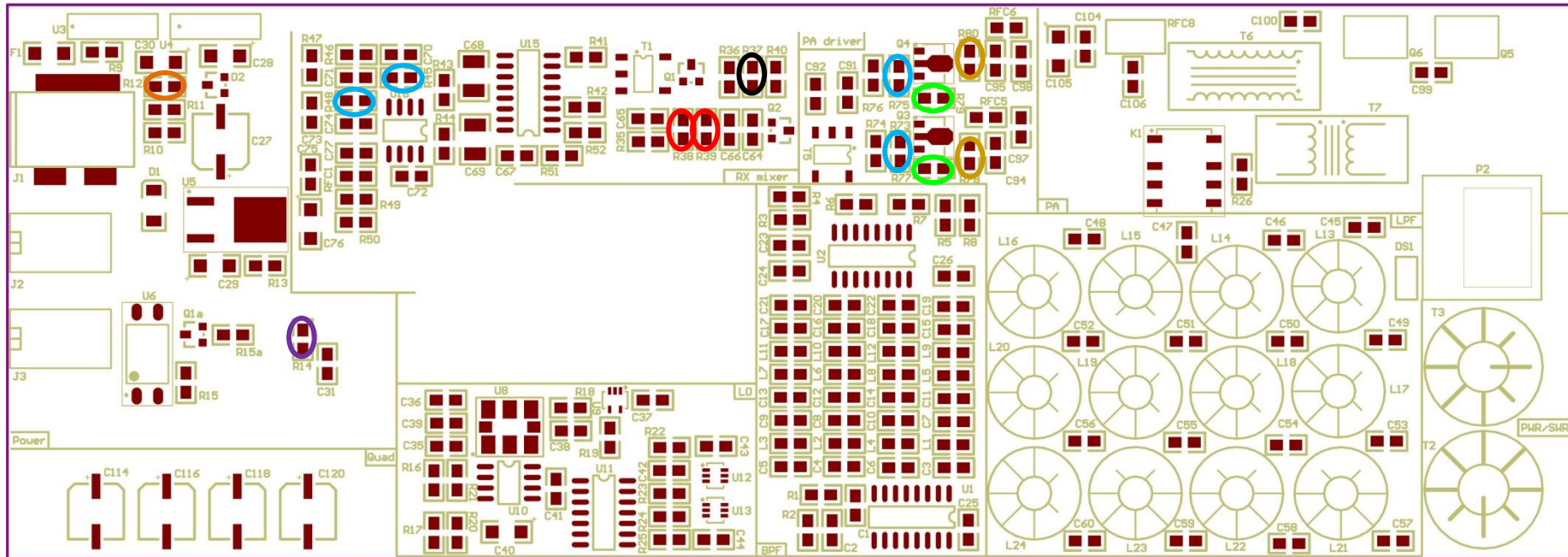
2 pieces/Stück

**2.2 K**

4 pieces/Stück

**56 Ohm**

2 pieces/Stück



**5.6 K**

1 pieces/Stück

**3.9 K**

1 pieces/Stück

**1.5 K**

1 pieces/Stück

**4,7 Ohm**

2 pieces/Stück

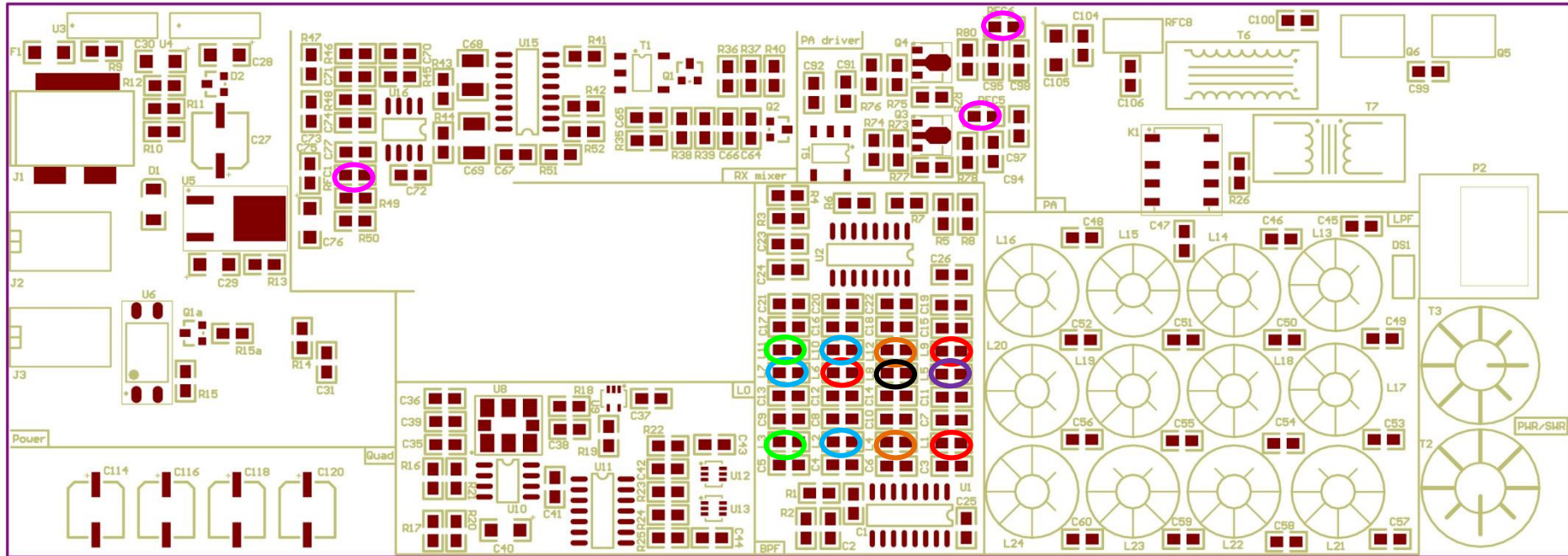


# RF-Board Bottom / Unterseite

**2.2  $\mu\text{H}$**   
3 pieces/Stück

**1  $\mu\text{H}$**   
3 pieces/Stück

**0.47  $\mu\text{H}$**   
2 pieces/Stück



**0.33  $\mu\text{H}$**   
2 pieces/Stück

**4.7  $\mu\text{H}$**   
1 pieces/Stück

**0.68  $\mu\text{H}$**   
1 pieces/Stück

**47  $\mu\text{H}$**   
3 pieces/Stück

# RF-Board Bottom / Unterseite

**PMEG6010CEH (D1)**

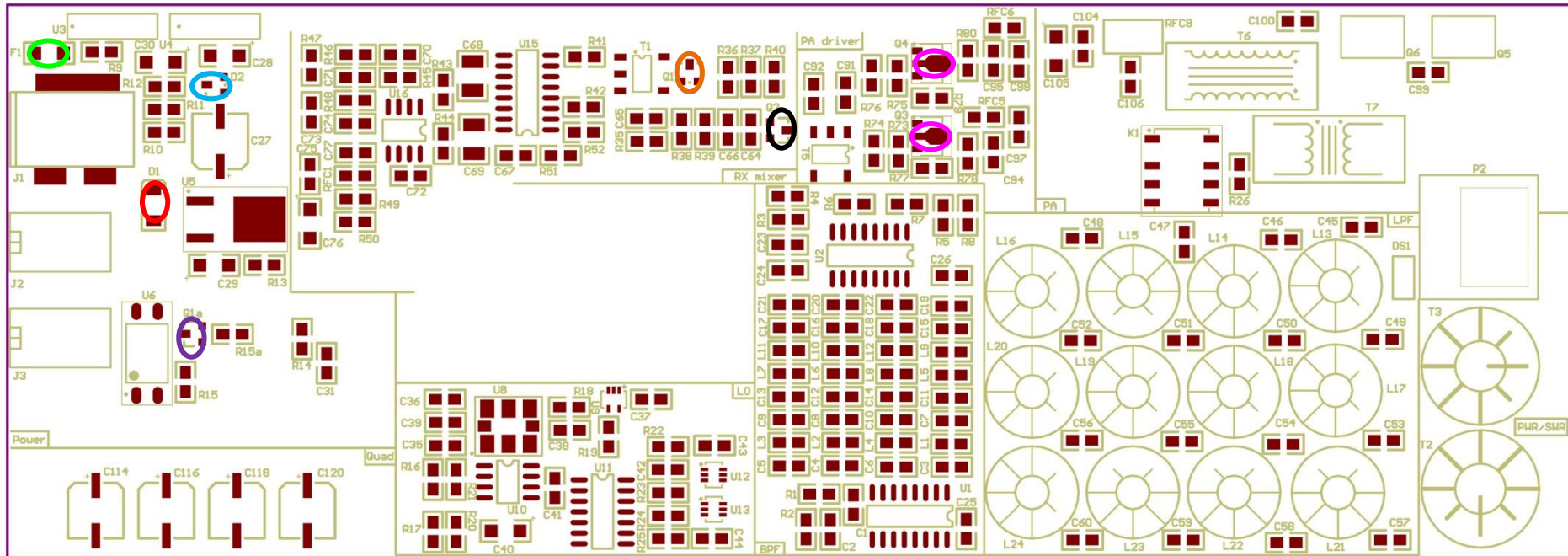
1 pieces/Stück

**BAT54A (D2)**

1 pieces/Stück

**Fuse (F1)**

1 pieces/Stück



**BFR93A (Q1)**

1 pieces/Stück

**NDS356AP (Q1a)**

1 pieces/Stück

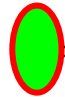
**PMBFJ112 (Q2)**

1 pieces/Stück

**DXT3150 (Q3,4)**

2 pieces/Stück

# RF-Board Bottom / Unterseite

 = 25V Typ

**100  $\mu$ F**

5 pieces/Stück

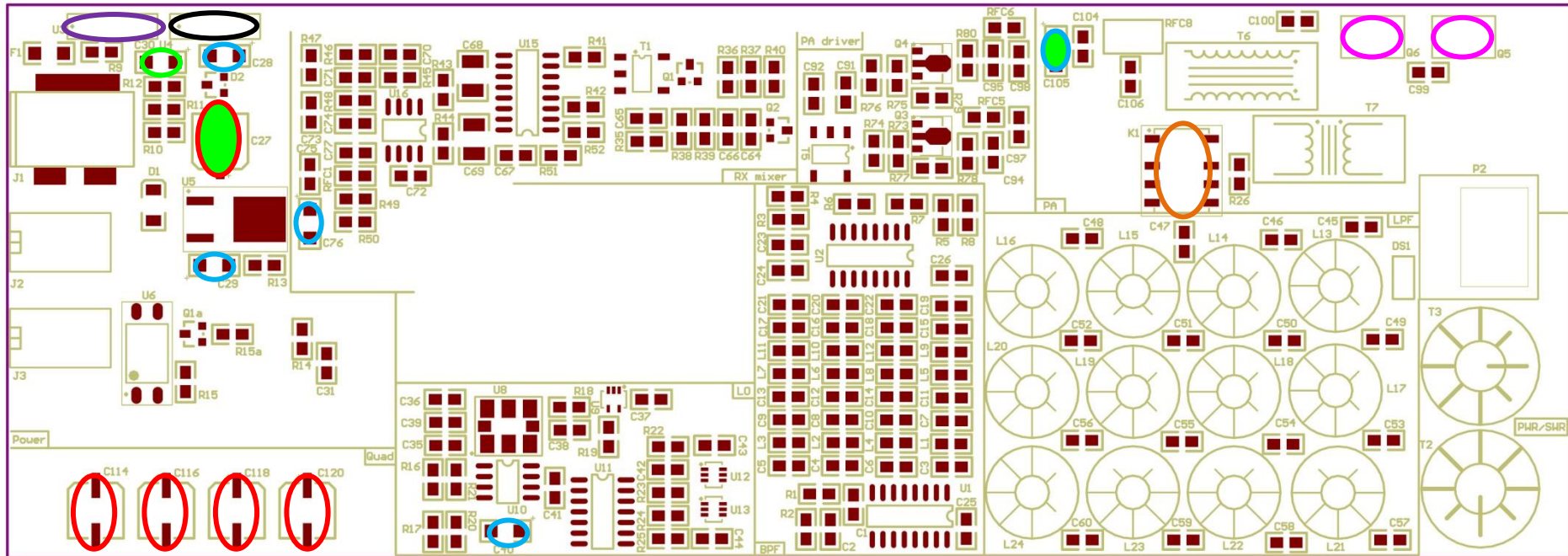
**10  $\mu$ F**

5 pieces/Stück

 = 16V Typ

**22  $\mu$ F**

1 pieces/Stück



**G6KU-2FY(K1)**

1 pieces/Stück

**LM2941 (U3)**

1 pieces/Stück

**MC7805 (U4)**

1 pieces/Stück

**RD16HHF1 (Q5,6)**

2 pieces/Stück