

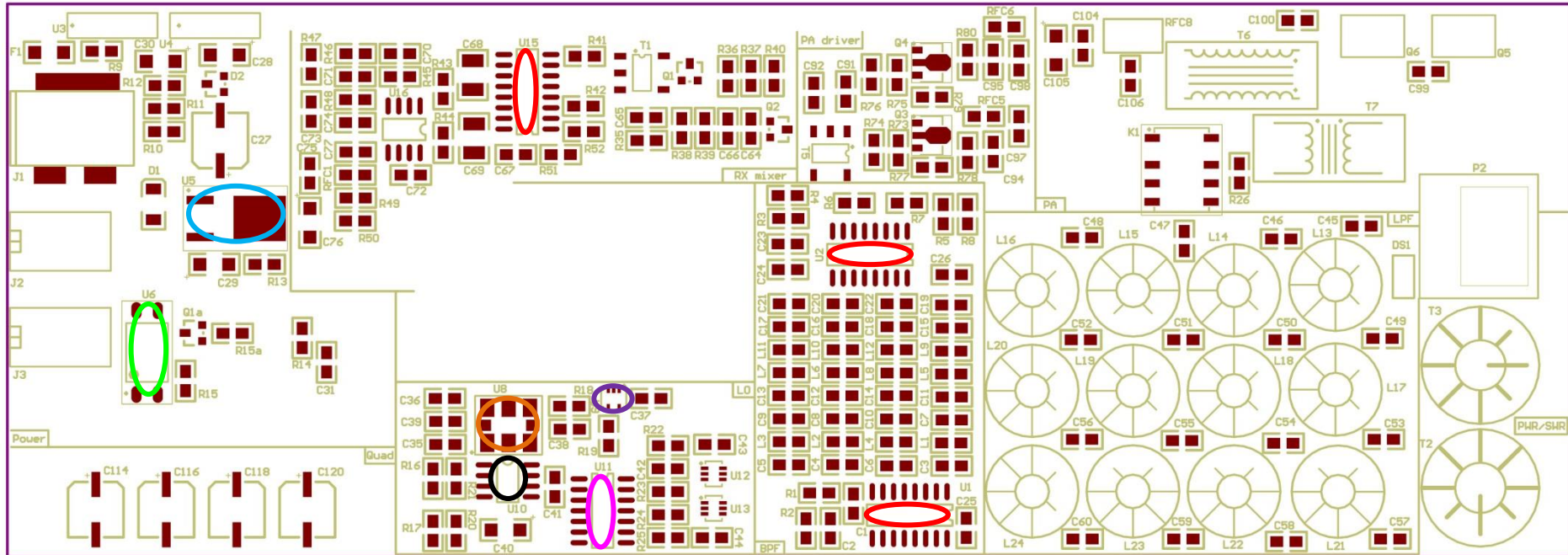
RF-Board Bottom / Unterseite

SN74CBT3253C (U1,2,15) **LF33CDT** **ISP817XSM (U6)**
UA78M33 (U5)

3 pieces/Stück

1 pieces/Stück

1 pieces/Stück



SI570 (U8)

74LVC1G17 (U9)

MCP9801 (U10)

74LCX74M (U11)

1 pieces/Stück

1 pieces/Stück

1 pieces/Stück

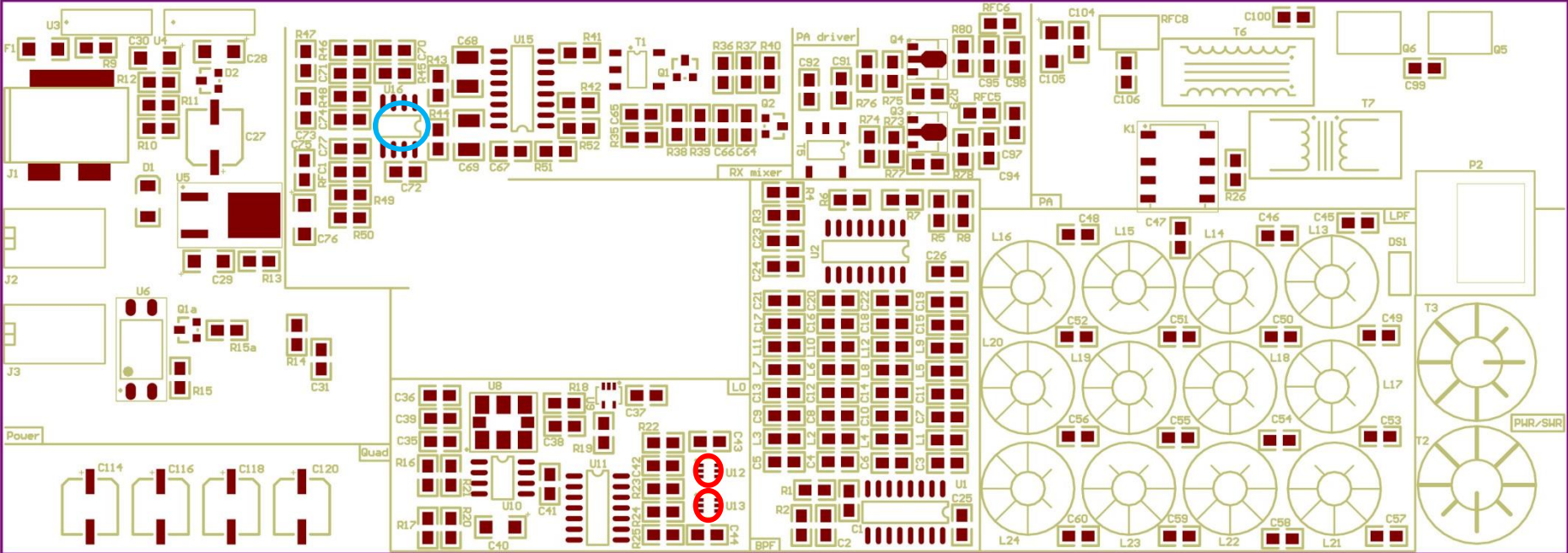
1 pieces/Stück

RF-Board Bottom / Unterseite

SN74LVC2G17 (U12,13) **OPA2350UA (U16)**

2 pieces/Stück

1 pieces/Stück

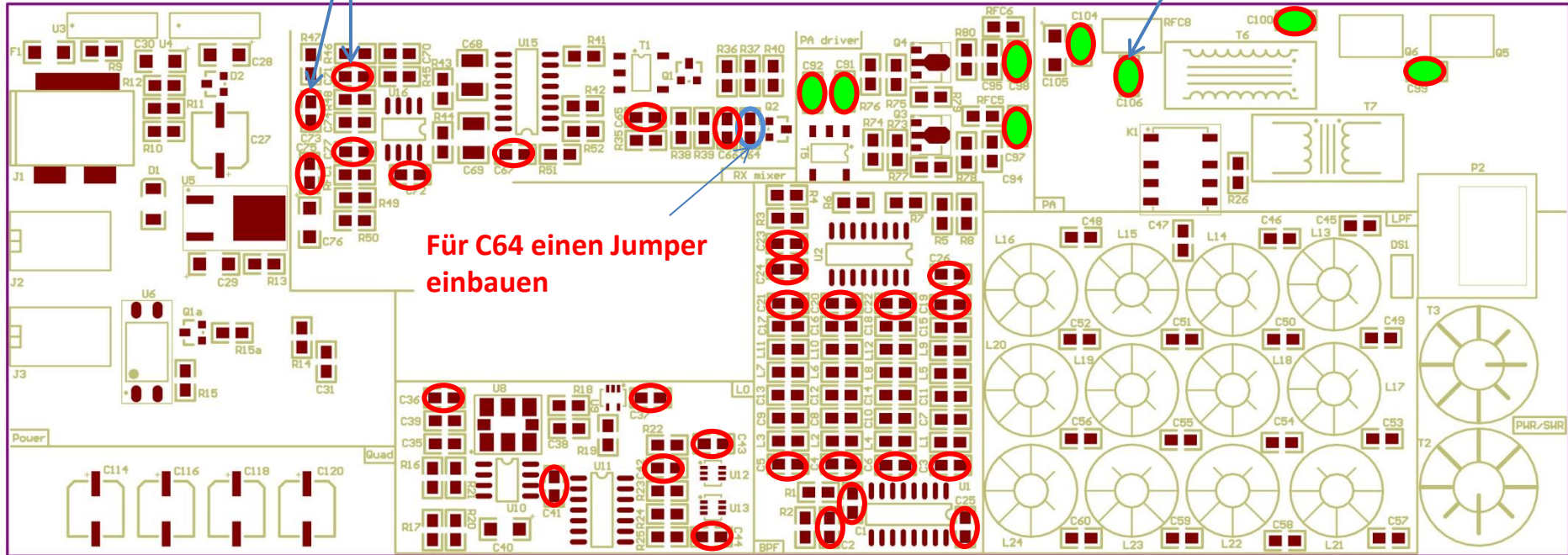


RF-Board Bottom / Unterseite

C71 und C73 durch Jumper ersetzen

100nF = 100V Typ
34 ~~37~~ pieces/Stück

Parallel zu C106 einen 10µF Tantal einlöten
POLARITÄT BEACHTEN

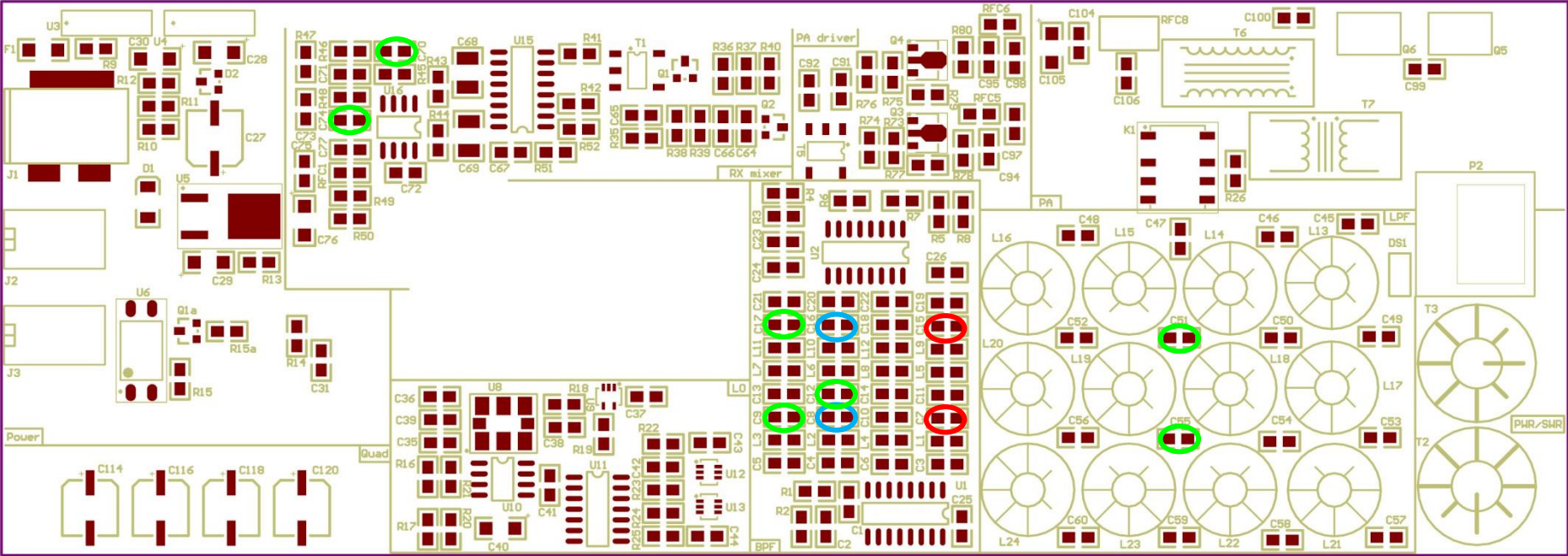


RF-Board Bottom / Unterseite

1.5nF
2 pieces/Stück

820pF
2 pieces/Stück

390pF
7 pieces/Stück



RF-Board Bottom / Unterseite

180pF

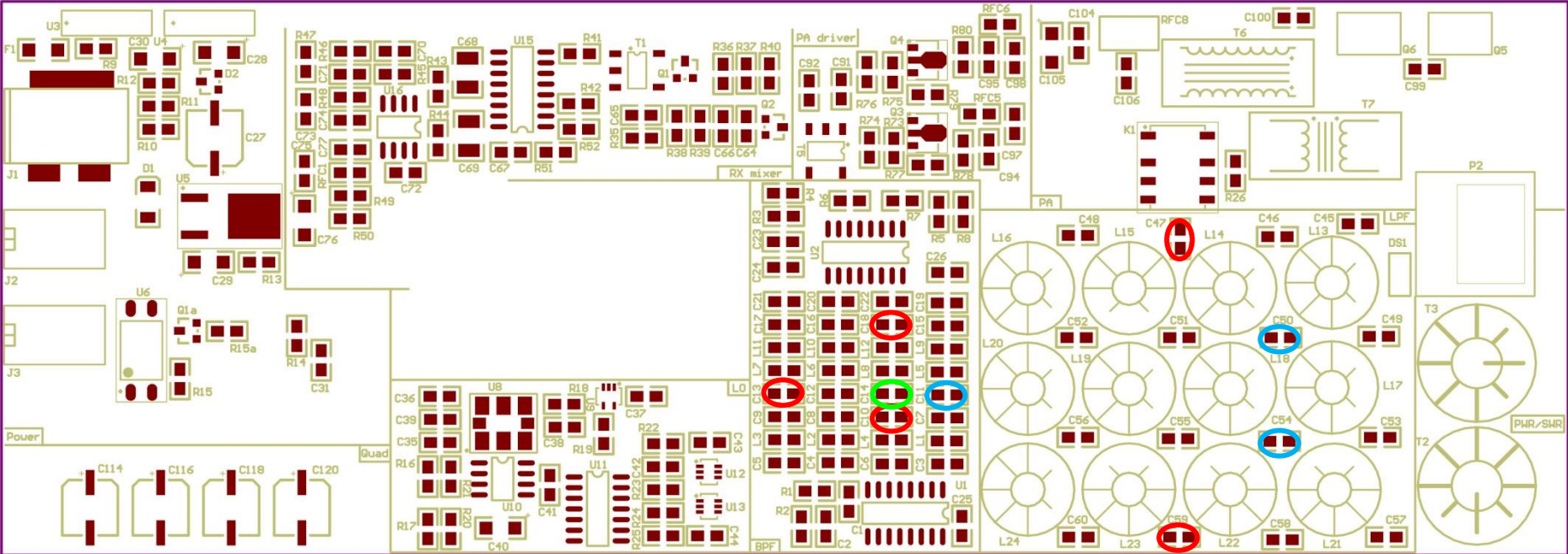
5 pieces/Stück

680pF

3 pieces/Stück

82pF

1 pieces/Stück



RF-Board Bottom / Unterseite

10nF

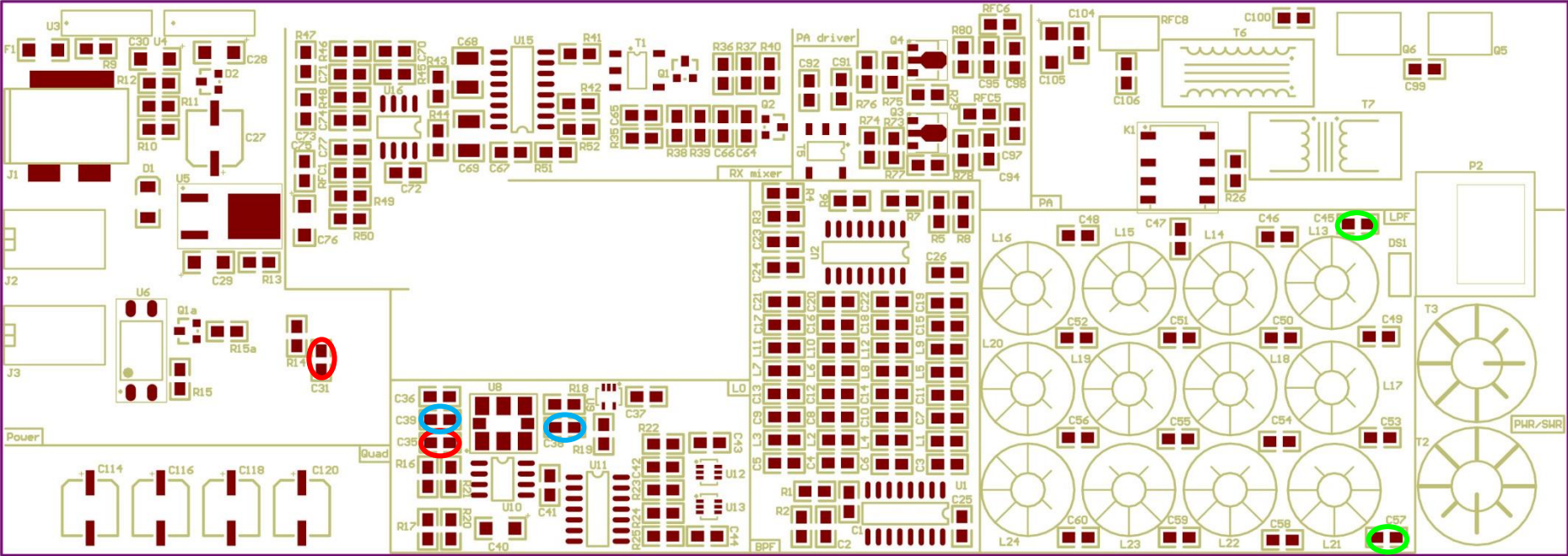
2 pieces/Stück

10pF

2 pieces/Stück

470pF

2 pieces/Stück

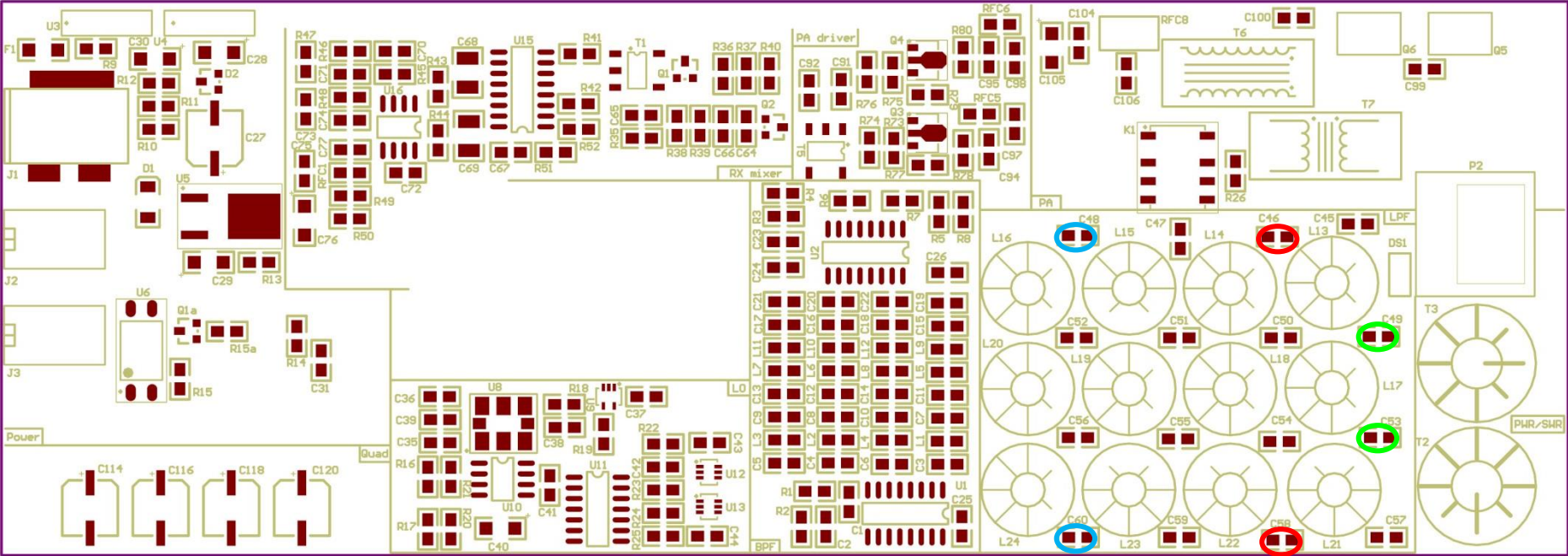


RF-Board Bottom / Unterseite

270pF
2 pieces/Stück

100pF
2 pieces/Stück

1.2nF
2 pieces/Stück

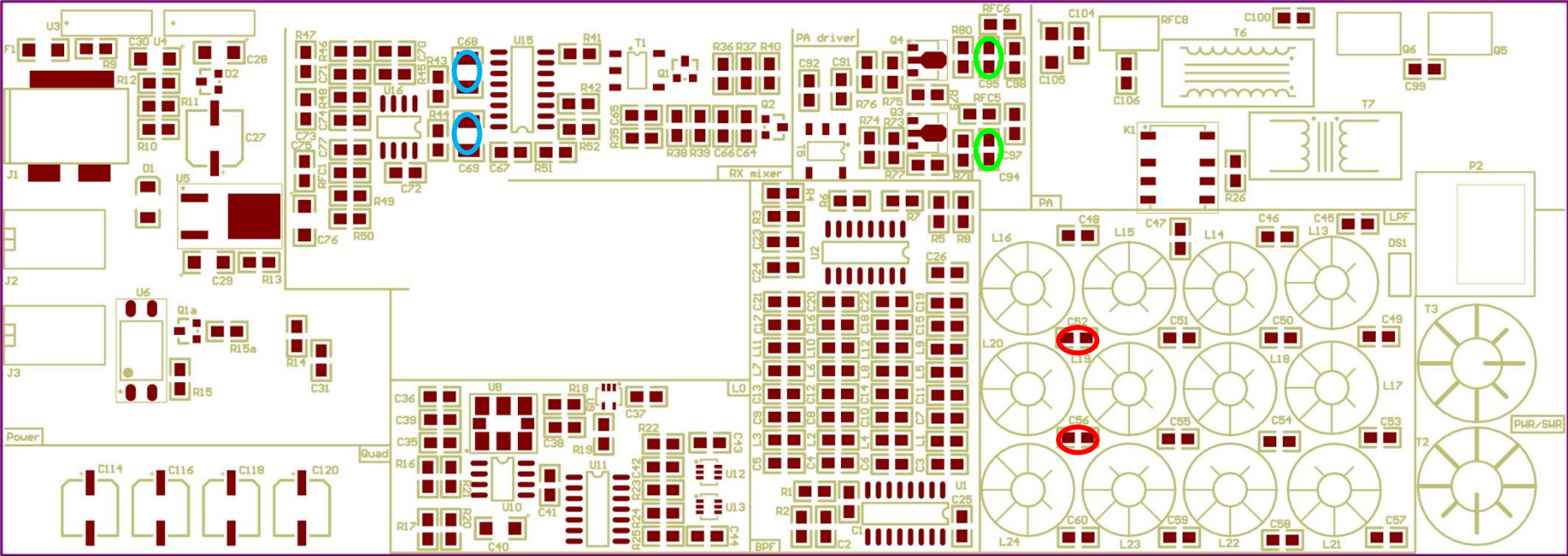


RF-Board Bottom / Unterseite

220pF
2 pieces/Stück

22nF
2 pieces/Stück

47nF
2 pieces/Stück



RF-Board Bottom / Unterseite

Modifikation! (Alt: 470)

100 Ohm

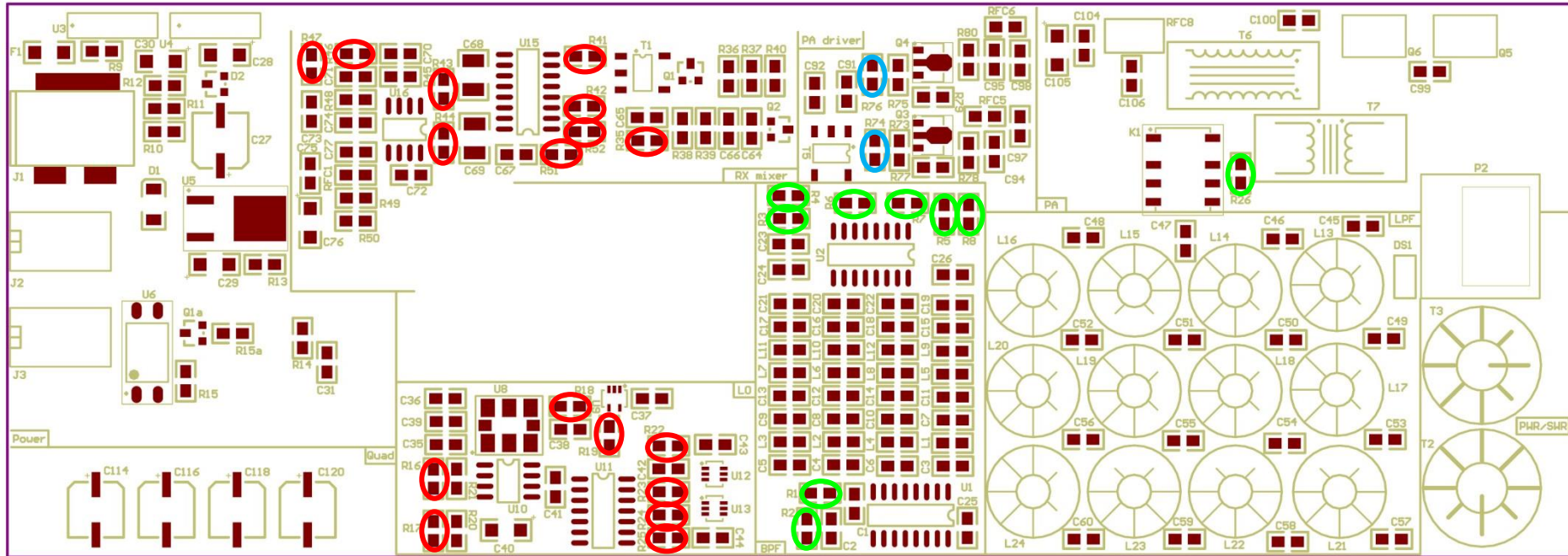
17 pieces/Stück

2K2 Ohm!

2 pieces/Stück

0 Ohm

9 pieces/Stück



RF-Board Bottom / Unterseite

4.7 K

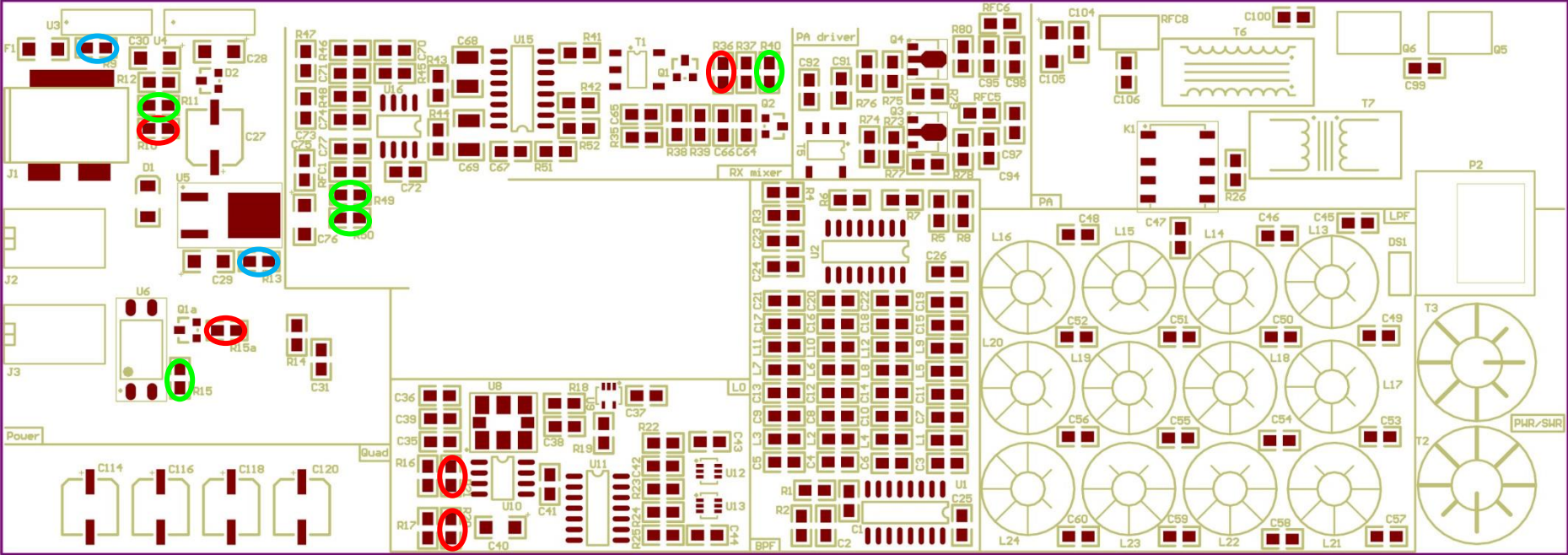
5 pieces/Stück

15 K

2 pieces/Stück

1 K

5 pieces/Stück



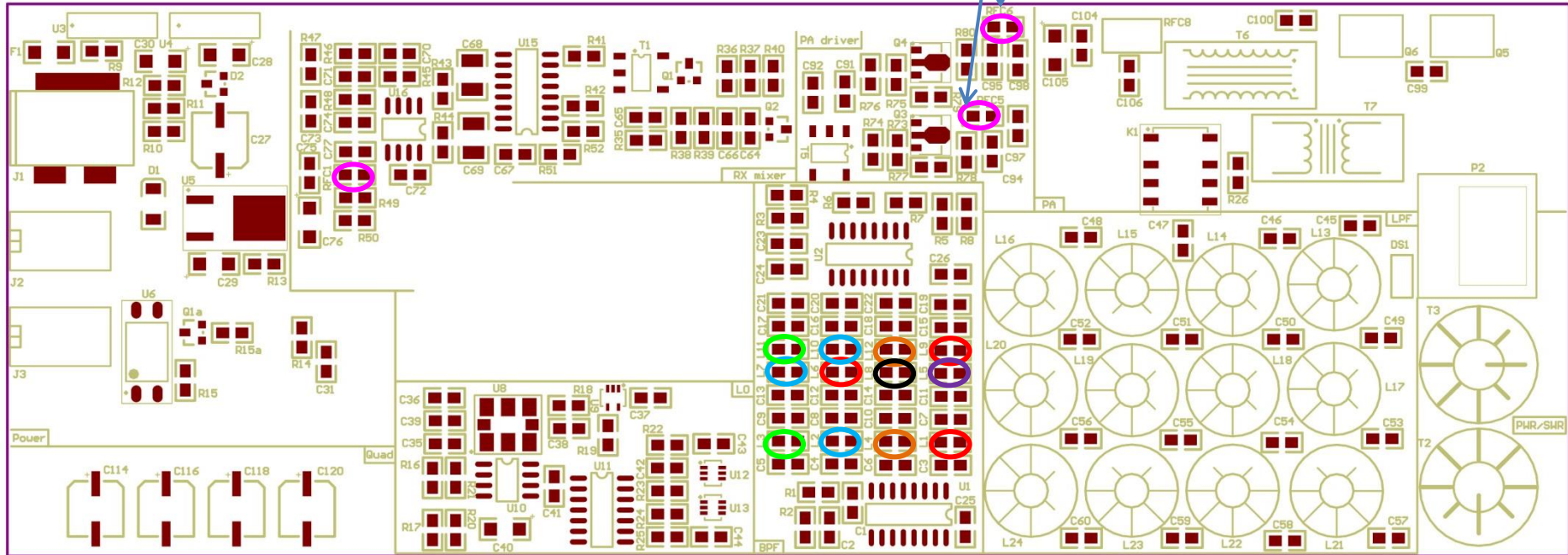
RF-Board Bottom / Unterseite

RFC5 u. RFC6 selbst wickeln!

2.2 μH
3 pieces/Stück

1 μH
3 pieces/Stück

0.47 μH
2 pieces/Stück



0.33 μH
2 pieces/Stück

4.7 μH
1 pieces/Stück

0.68 μH
1 pieces/Stück

47 μH
~~1~~ 3 pieces/Stück

RF-Board Bottom / Unterseite

PMEG6010CEH (D1)

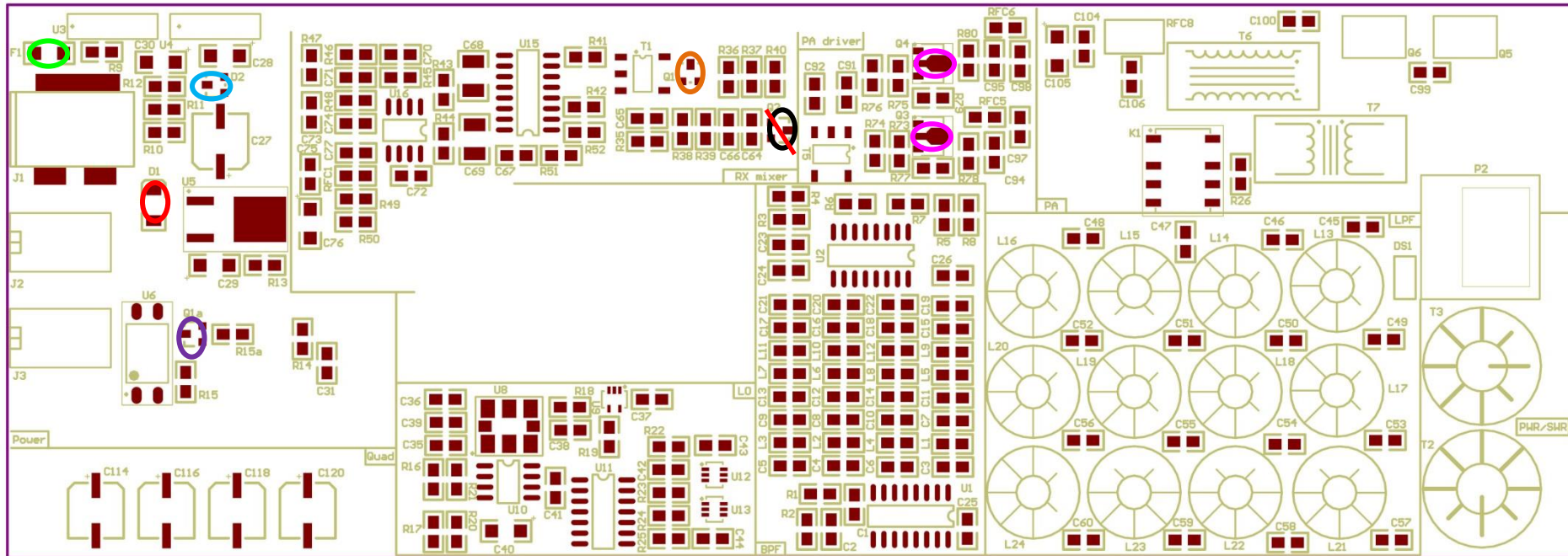
1 pieces/Stück

BAT54A (D2)

1 pieces/Stück

Fuse (F1)

1 pieces/Stück



BFR93A (Q1)

1 pieces/Stück

NDS356AP (Q1a)

1 pieces/Stück

~~**PMBEJ112 (Q2)**~~

~~1 pieces/Stück~~

~~ENTFÄLLT~~

DXT3150 (Q3,4)

2 pieces/Stück

RF-Board Bottom / Unterseite

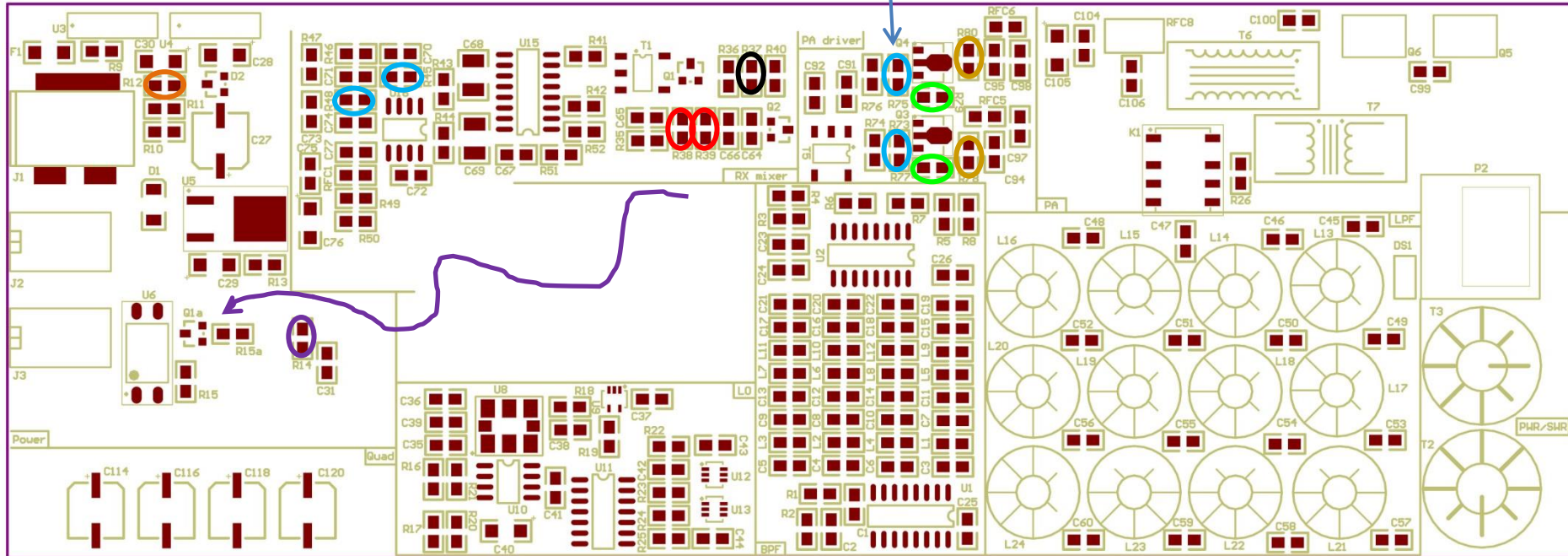
An R74 und R76 je einen 100nF Kondensator (Massepads) senkrecht stehend anlöten

R73 und R75 senkrecht stehend einlöten an Basen Q3/4
Alle 4 hochstehenden Pads miteinander verbinden und an Q1a/R15 anschliessen (PTT)

10 Ohm
2 pieces/Stück

2.2 K
4 pieces/Stück

56 Ohm
2 pieces/Stück




5.6 K
1 pieces/Stück

3.9 K
1 pieces/Stück

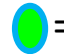
1.5 K
1 pieces/Stück

4,7 Ohm
2 pieces/Stück

RF-Board Bottom / Unterseite

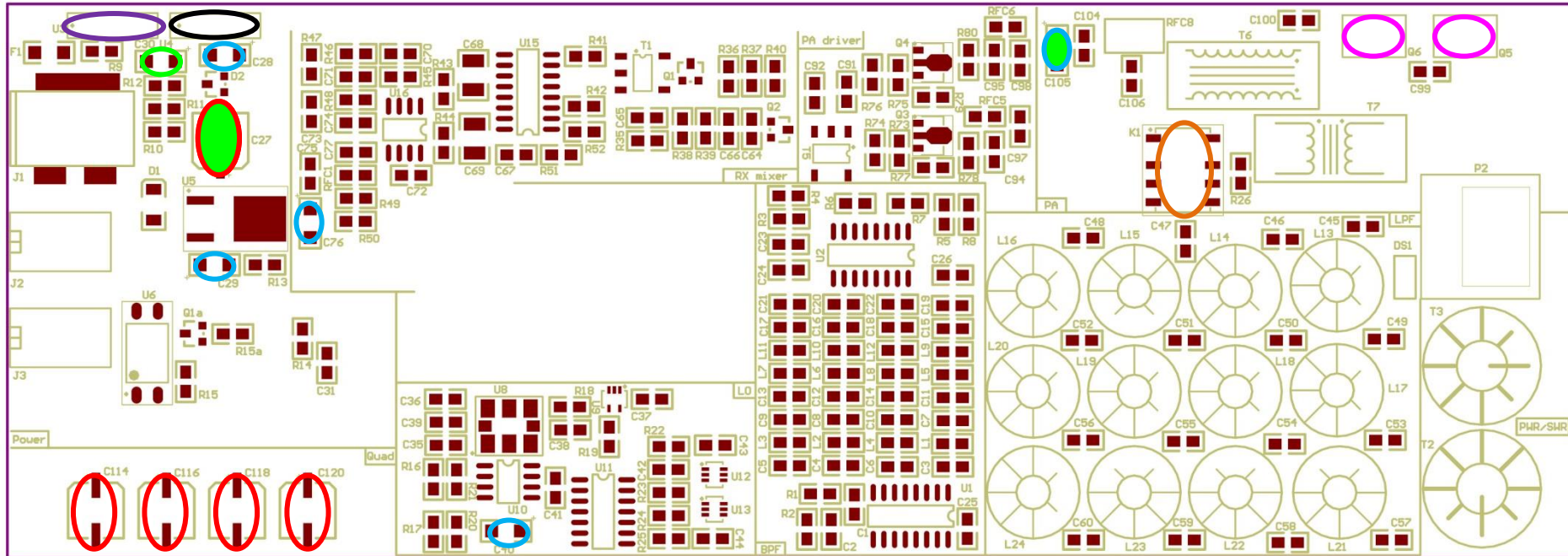
 = 25V Typ

100 μ F
5 pieces/Stück

 = 16V Typ

10 μ F
5 pieces/Stück

22 μ F
1 pieces/Stück



G6KU-2FY(K1)

1 pieces/Stück

LM2941 (U3)

1 pieces/Stück

MC7805 (U4)

1 pieces/Stück

RD16HHF1 (Q5,6)

2 pieces/Stück