

# Bootloader Install

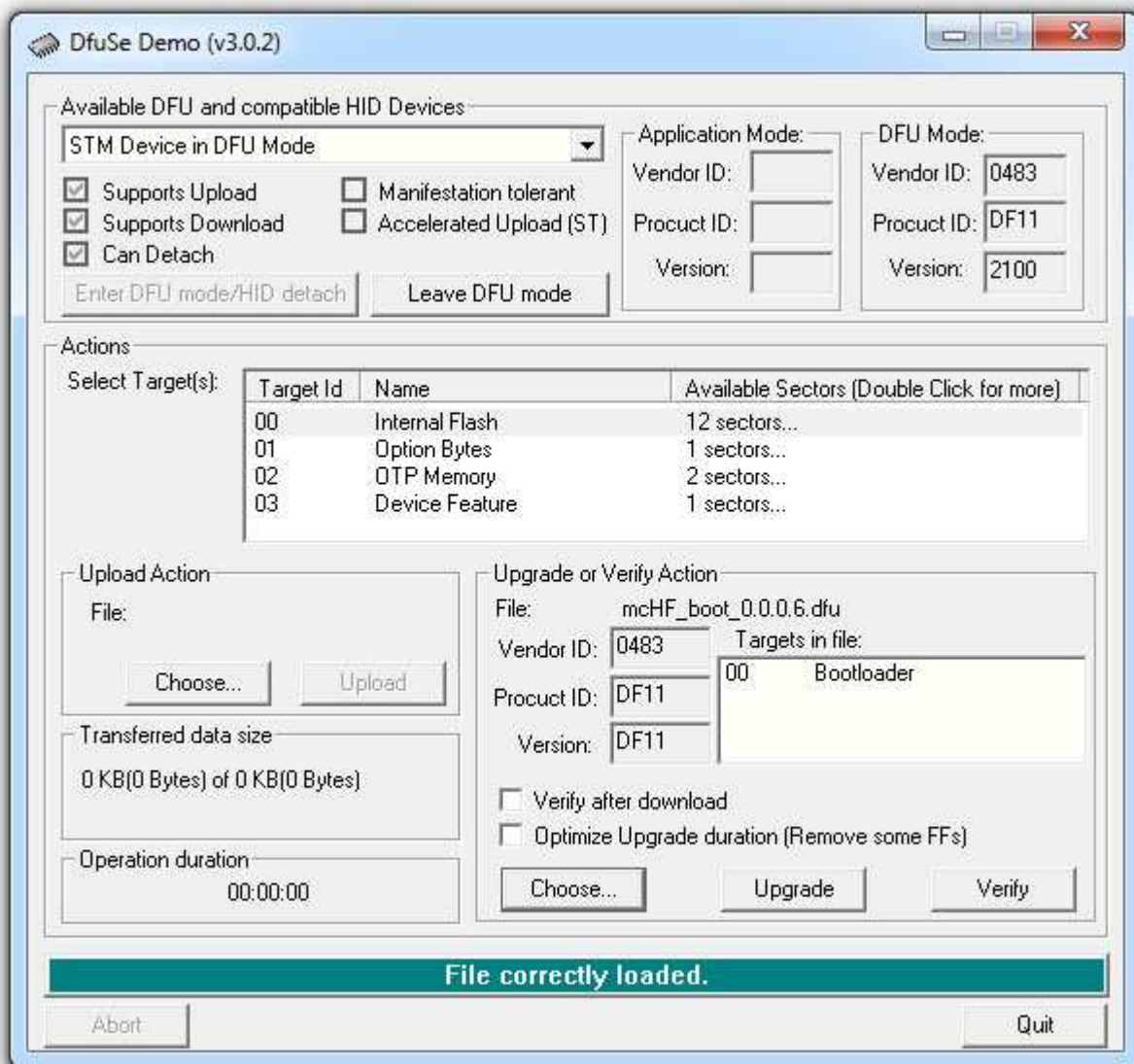
The first thing that needs to be done after completion of the UI board is to program the bootloader. This is done via the factory Bootrom of the STM32F4 processor.

Please use the DfuSe tools from ST for blank chip programming [here](#). Please do not play with any Option Bytes (if you lock the fuses, the CPU will be useless)!

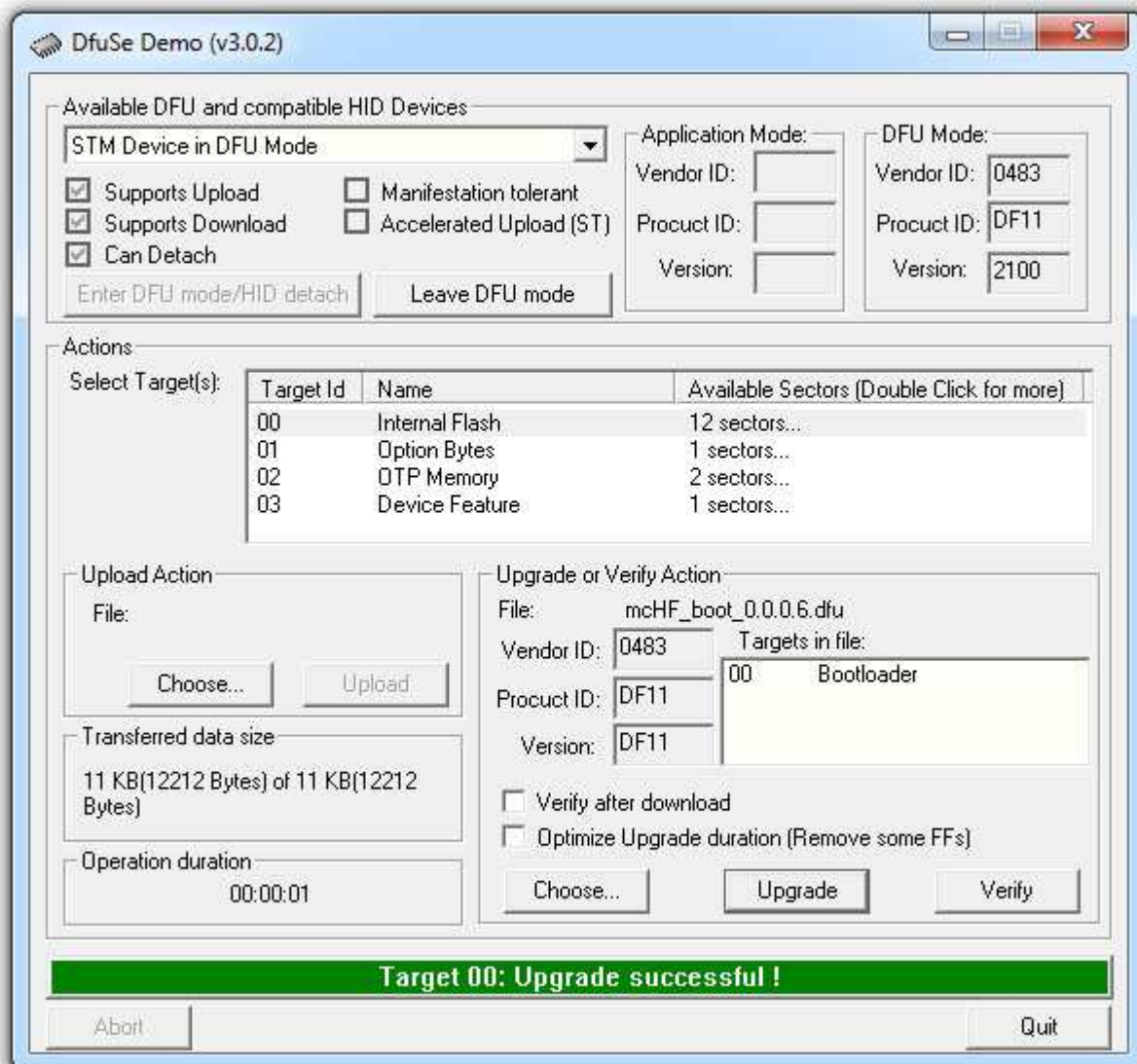
How to enter DFU mode:

1. Connect USB cable to pc (mini usb connector)
2. Close P6 jumper at the bottom of the UI board
3. Press and hold BAND+ button
4. Press and hold power
5. Release BAND+ and keep holding the power button(during the whole update process)
6. USB DFU device should appear

After that start the DfuSe Demo application and make sure the chip is detected, then select the latest bootloader file (dfu extension) with the Choose button.



Keep pressing the power button and click Upgrade, after a while you should get success on the upgrade process



Disconnect power and open the P6 jumper to restore normal operation