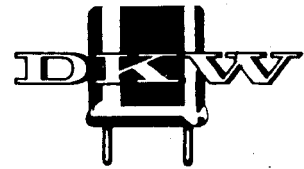
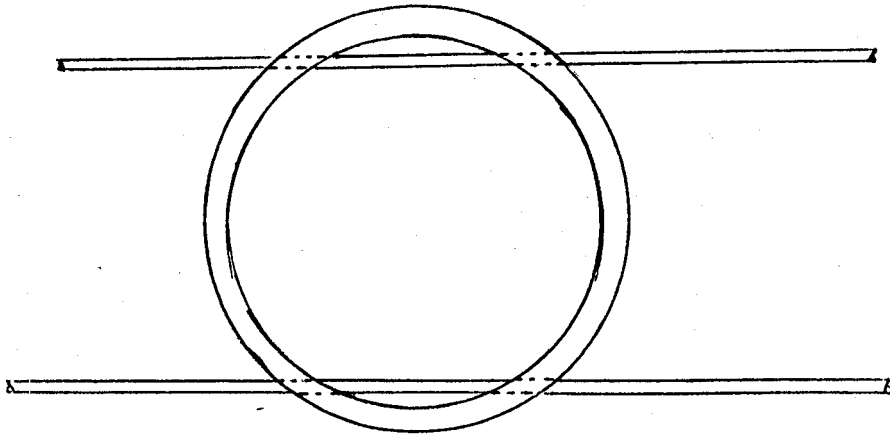


# Open Wire Feedline Construction

by Peter Liebenberg ZS2PL - Port Elizabeth Branch

- (1) Cut plastic pipe into rings, e.g. 10mm wide.
- (2) Lay rings in a straight line, side by side, and using a straight edge, mark position of holes to be drilled to accommodate the open wire conductor. (Choose drill size to suit conductor.)
- (3) Using heavy duty rip-cord or other stranded conductor, thread them through as shown, space them out along the feed line and bind into position or else use flexible sealer (e.g. Pliobond or Pattex) to hold them in position.



**HIGH QUALITY  
CRYSTALS  
AT LOW PRICES  
AND  
QUICK DELIVERY**

DKW Electronics (Pty) Ltd.  
P.O. Box 1250  
EDENVALE 1610  
Tel: 609-4900  
Telex: 426835 dkw

Most of man's inventions  
have been time savers -  
then came television.

# Tuned Circuit Checker

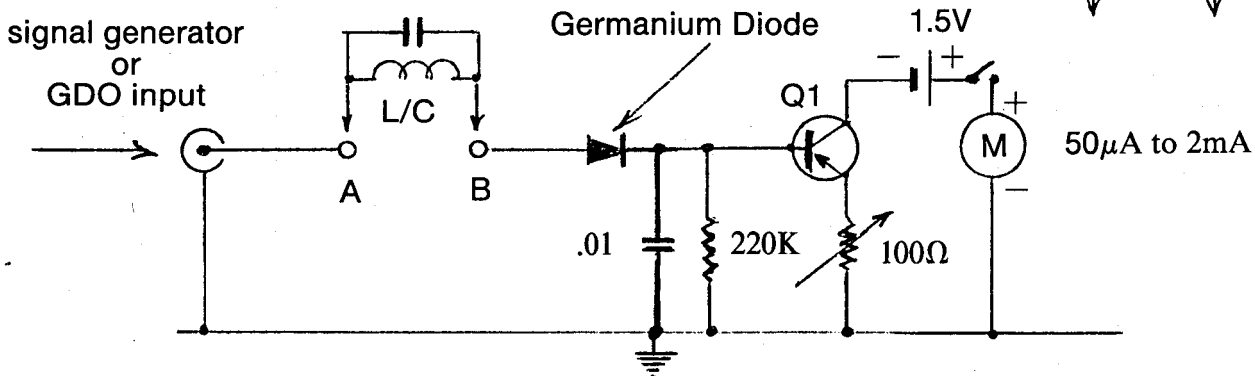
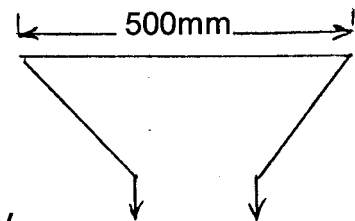
by Peter Liebenberg ZS2PL - Port Elizabeth Branch

## Operation

The circuit under test is inserted as shown and held by crocodile clips and the variable resistor in the emitter leg is adjusted for mid-range on the meter. When signal source is tuned to L/C resonance, a deep dip is shown on the meter. A series circuit will

show a slight upward kick. An alternate coil of about 10 turns may be used instead, to pick up induced resonance indication from adjacent L/C combination. The loop shown is held parallel to an antenna to indicate resonance and is plugged in at A-B when dip is also shown.

Q1 = Any small signal transistor  
L/C = Tuned circuit under test  
(parallel or series)



## Ondersteun Radio ZS

Stuur jou getikte artikels aan die  
redakteur, posbus 3911, Kaapstad 8000.

