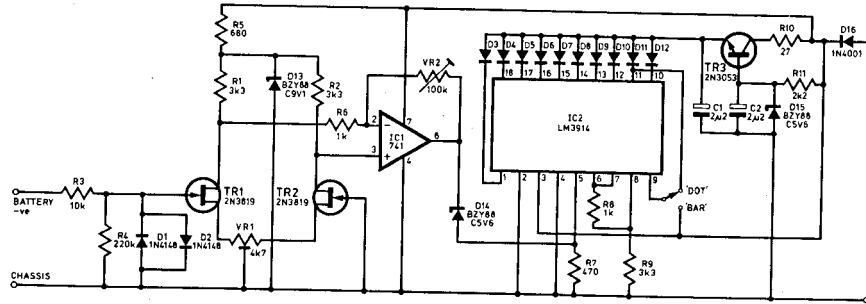


LED CAR AMMETER

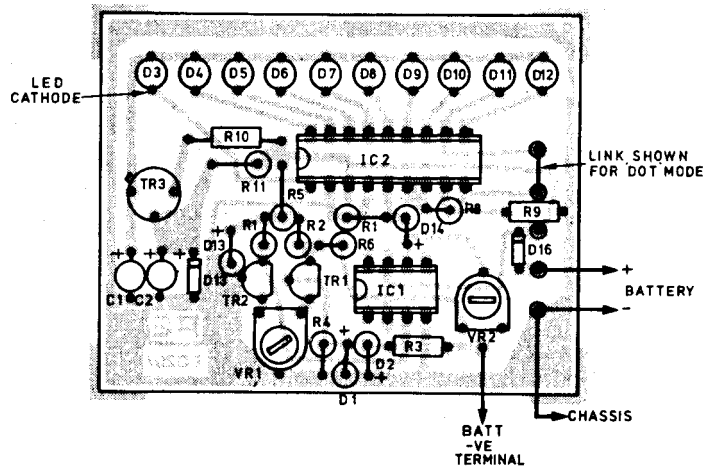
Conventional moving iron ammeters usually offer poor calibration, whilst transient response is severely impaired due to the damping needed to prevent overshoot. These ammeters are often difficult to install since they require heavy duty leads (30A or more) from the battery.

This instrument overcomes these limitations and provides linear response over a range of typically 25A (approx). Furthermore, the displayed current range is adjustable, thus permitting the user to preselect the actual range of indication to suit his particular needs. The module is basically a voltage measuring device with a high input impedance.

Circuit Diagram



Component Layout



SOURCE: P.E., DEC 1979: Page 48