

ENTER THE PUMA



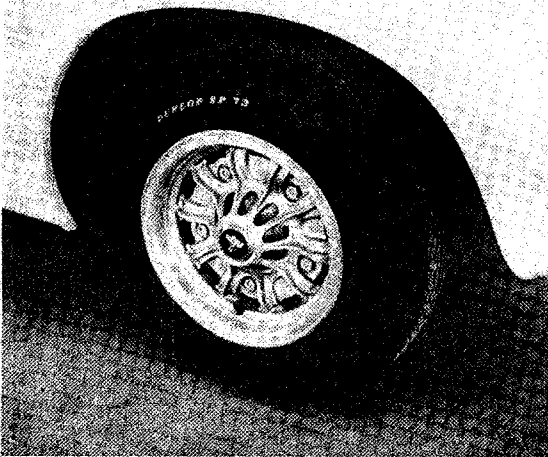
Frontal appearance of the Puma is neat without unnecessary frills. The compartment carries spare wheel, fuel tank plus room for a soft case or two.

South Africa has had more than its fair share of fibreglass specials on Volkswagen pans, but the new PUMA, a Ferrari-esque two seater GT is rather more than a 'special'. Designed and built initially only in Brazil, it is now being built, as a complete car only, from all new Volkswagen SA parts, at New Germany near Pinetown, Natal, by Bromer Motor Assemblies (146 Shepstone Road, New Germany, Natal).

Built more for export to

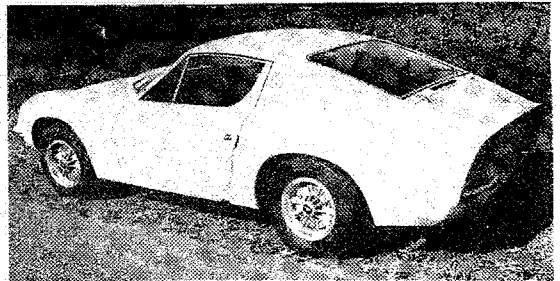
Europe and Australia than mere local consumption, the PUMA is nevertheless available in this country to special order at R3 996 ready to go. And go it does. With the standard equipment 1600 Volkswagen engine, complete with twin carburetors, modified cylinder heads and rerouted exhaust system, a timed 0 to 100 km/h in 9.8 seconds is quoted, allied to a 167 km/h top speed. All mechanical parts are Volkswagen, while the fibreglass body has an extra-

ordinary high standard of finish, up to and in many cases better than we have seen overseas. The doors shut strongly and closely, and the interior is in black throughout, neat gauges and small leather-rim complementing superbly shaped seats with cloth inserts. From brief acquaintance with the Puma, one immediately realises that the car is not just another special, but a complete car in its own right, just as is a Porsche, Jensen or Lotus. At the moment, three or four a week is the immediate aim, with twenty a month before too long, while we understand that in Switzerland alone, the distributor gave the Brazil concern an order for 20 a month almost a year ago, and has not received one so far, so busy are Puma Brazil in their own market. It is the export side of the Puma demand, especially in Europe, that the local builders will be trying to fill, as well as looking after home demand, which already has begun to snowball.

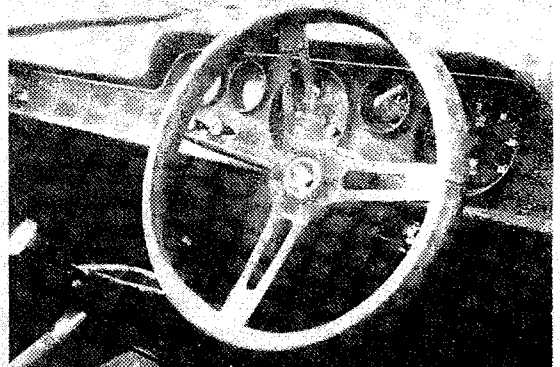


The mag wheels are especially imported - and ar'nt they beautiful!

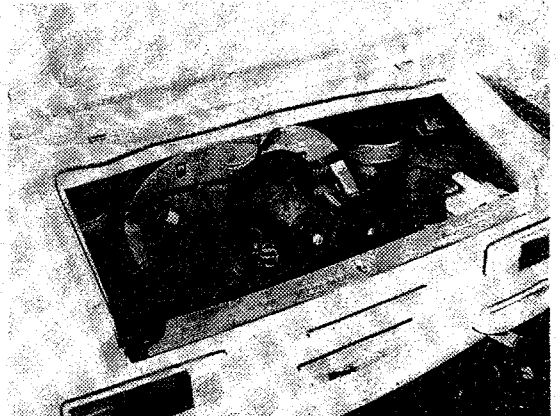
Upside down bodies being trimmed.



Ferrari-like lines can be seen in this three quarter shot. The doors are wide and allow easy access and exit.



Purposeful interior layout



Engine room showing 1600 VW engine with twin carbs

A completed shell entering the spray booth.

