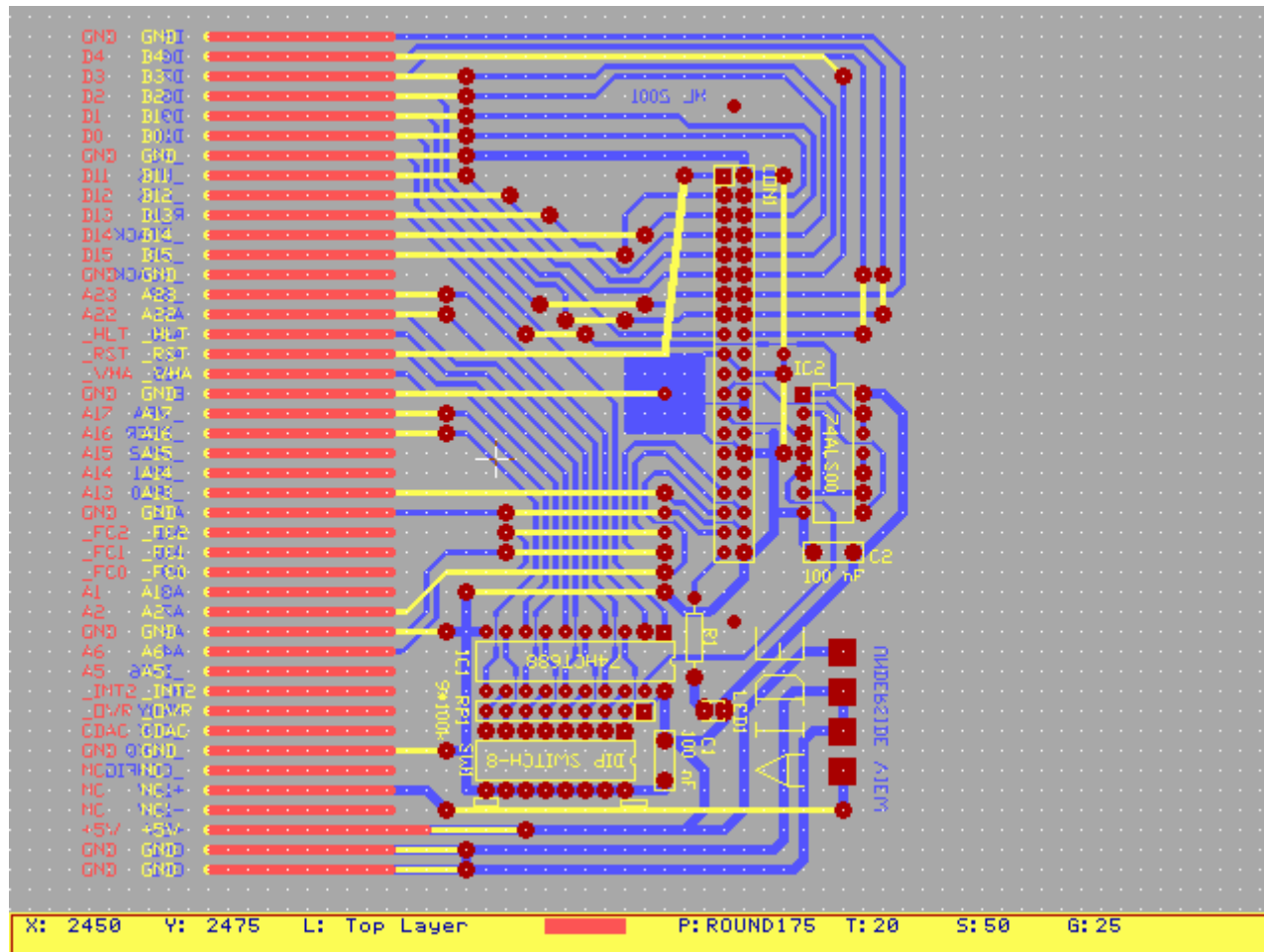


[Version 1.5 \(278174 bytes\)](#) very untested "BETA" release with a new PCB for two chip circuit and CDROM driver. Fixed A BUG in the PCB in version 1.3.





PCB design

Features: Automatic drive identification. ide.device sources included

Old software supports one hard disk drive / interface, no ATAPI. **New** software patches by Radovan Kobularcik support two drives and ATAPI CD-ROMs. iderkspr.zip is a "preliminary" version of this software, with possibly non-critical bugs. This is also included in the v1.5 a500ide.lha in a lha archive.

Tested on KS1.3 and 2.05. Tested drives: CP3044, WD Tidbit60, Seagate ST3850.

With KS2.04+, there must not be a FileSystem = L:FastFileSystem line in the mountlist entry because FastFileSystem is in KS-ROM.

The IDE cable should be very short to minimize bus errors, too long a cable can corrupt data in Amiga's buses and memory. It is probably a good idea to use a good quality factory made cable.

[OLD schematics \(V1.2\) in a GIF](#) Use 74ALS00 instead of 74LS00. The one kilo-ohm resistor is not needed at all.
[Old version 1.2 \(215303 bytes\) Contains a PCB for a circuit with PAL16L8 and 74..245 buffers. I couldn't get it work well \(timing problems?\), so I removed it from V1.3.](#)

Standard drafts:

[ata-r32.txt](#)

[ata-r32.lha](#)

[ata3-r6.exe](#) (MS-DOS packed Word doc)

Other interfaces

[ATID.lha by Petri Pihkala](#)

NOTE: *IOW and *IOR are mismatched in the schematic. This interface should work with Quantum LPS 52 IDE drive. It didn't work with my Conner Peripherals 3044, so I had to make A500ide. The byte order is different in this hack.

There is some hard disk stuff in [Aminet](#) hard/hack and hard/drivr (bug fixed SPARTAN SCSI driver. I used it's main .device code in a500ide and wrote my own hardware interfacing code for IDE drives.)