

ECO

1. DISTRIBUTED CODE _____ 2. PG 1 OF 6 3. ECO # 02426
 4. DESCRIPTION STRAIN RELIEF NOT ADEQUATE
 5. PRODUCTS AFFECTED E13B, 7XX, VARIOUS 6. ECR ORIGINATOR R. THOMPSON
 7. DRAWN BY JBS 8. CHECKED BY [Signature] 9. CCB CHAIRPERSON [Signature] 1/14/93

10. Item No.	11. Items Aff'd	12. Part Number	13. REV		14. Description
			FROM	TO	
1	DWG	509170-DWG	A	B	DWG, PCA, CPU, E13B
2	BOM/PI	509170-006	B	C	PCA, CPU, E13B, RS232, SET
3	BOM/PI	509236-001	13	C	MICR UNIT, 752, TDA, SETEC

15. [Signature] [Signature]
 PROD ENG 11/21/93 MAT'L 11/17/93 OUTSIDE 1/1
[Signature] [Signature]
 DES ENG 1/14/93 Q.A. 1/14/93 SALES 1/1

- *LEGEND
- BOM = Bill of Material
 - MP = Master Pattern
 - DWG = Engineering Drawing
 - TP = Test Procedure
 - OEF = Option Order Entry Form
 - MO = Manufacturing Outline
 - PI = Physical Item

[Signature]
1/13/93

ECO

17. ECO # 02426

18. PAGE 2

16. DISPOSITION KEY: U = No Use (No Action) S = Scrap (Replace) R = Rework (Retrofit)

PUR	STK	WIP	RGS	FLD	DATE
L	R	R	—	—	1/4/28

19. SUMMARY AND "FROM"- "TO" CONDITIONS (INCLUDE REWORK INSTRUCTIONS AS REQUIRED.)

SUMMARY

ONLY REQUIRED FOR E13B BOARDS WHICH ARE USED IN UNITS WITHOUT COVERS: APPLY ADHESIVE TO PCA AND CONNECTOR TO STRENGTHEN THE STRAIN RELIEF. THE CONNECTOR WAS BREAKING LOOSE FROM THE PCA IN THE FIELD.

LATEST UNITS SHIPPED @ REV C. INSTRUCTIONS FOR REV'S WERE INFORMAL DUE TO MANAGEMENT DECISION NOT TO RELEASE E13B PKG LAST YEAR



4

3

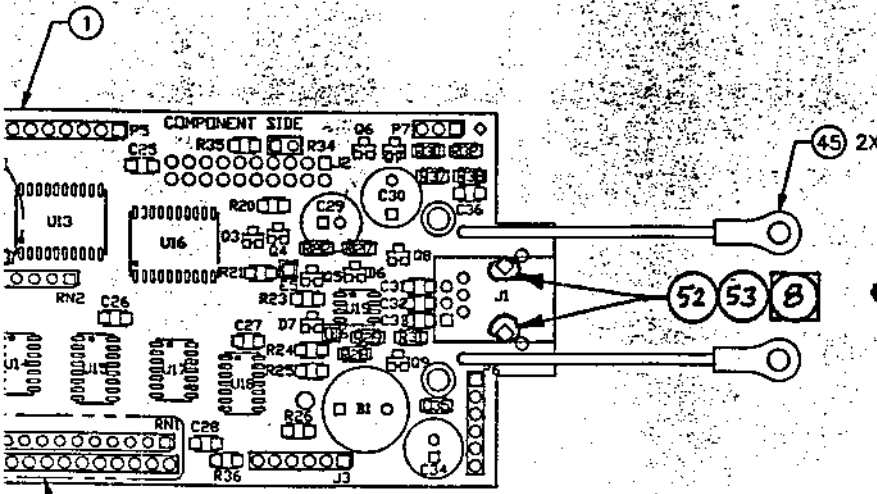
2

1

REVISIONS			
LTR	DESCRIPTION	DATE	APPROVED
A	PRODUCTION RELEASE PER 01995ECO	11/29/91	[Signature]

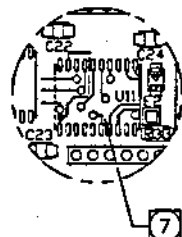
B CHG PER
02426ECO
PG. 3

EE DETAIL C



← ADD

SEE DETAIL B



DETAIL C

B
SIDE OF PCB

D
C
B
A

509170

UNLESS OTHERWISE SPECIFIED DIMENSIONS ARE IN INCHES TOLERANCES ARE: DECIMALS DECIMALS ANGLES XX ± .01 XXXX ± .0005 ± 0°-30' XXXX ± .005	FILE NAME	AMERICAN MAGNETICS CORPORATION CARSON, CALIFORNIA 90745	
	0170A1.DWG	APPROVALS	DATE
		DRAWN A. CRUZ	03MAY91
		CHECKED [Signature]	11/22/91
MATERIAL		PCA, CPU BOARD, C198	
FINISH		JEE CODE IDENT NO.	DRAWING TID.
			509170
DO NOT SCALE DRAWING	SCALE 2:1	SHEET 1 OF 1	

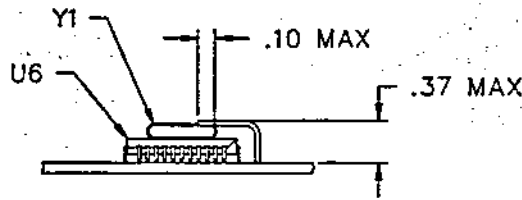
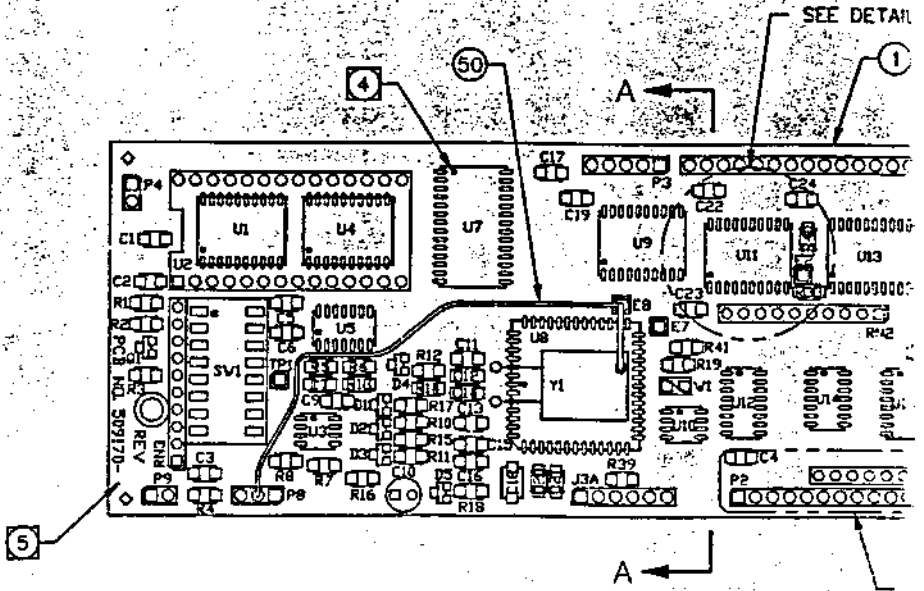
4

3

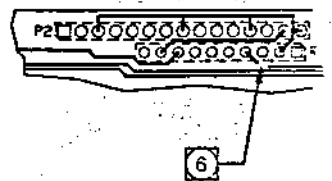
2

1

02426ECO
PG 4



DETAIL A-A



DETAIL B

VIEW FROM SOLDER SIDE OF

ADD

[Handwritten signature]
11/5/83

NOTES : UNLESS OTHERWISE SPECIFIED

1. INTERPRET DRAWING DIMENSIONS PER ANSI Y14.5M-1982.
2. ALL PARTS SHOWN MAY NOT BE USED ON ALL ASSEMBLIES SEE BOM FOR ITEMS REQUIRED.
3. SOLDERED COMPONENTS TO MEET REQUIREMENTS OF AMC PROCEDURE NO. 8050030.

④ SQUARE PADS INDICATE PIN 1 OF APPLICABLE COMPONENTS, POSITIVE TERMINALS OF POLARIZED COMPONENTS, CATHODE SIDE OF DIODES AND EMITTER SIDE OF BIPOLAR TRANSISTORS.

⑤ STAMP ASSEMBLY NUMBER AND REVISION LETTER IN PERMANENT, NON-CONDUCTIVE, CONTRASTING COLOR INK APPROXIMATELY WHERE SHOWN. SIZE OPTIONAL

⑥ ON SOLDER SIDE OF PCB, CUT TRACE OF RN1 PIN 4 (FOR -004, -005, AND -006 ONLY).

⑦ ON COMPONENT SIDE OF PCB, CUT TRACE OF U11 PIN 5 AND VA (FOR -001 ONLY).

⑧ APPLY ITEM ~~52~~ AND ~~53~~ TO PCA AS SHOWN AND INSTALL CONNECTOR U1. ~~ALSO~~ APPLY ITEM ~~52~~ AND 53 TO THE FAR SIDE OF PCA WHERE THE PINS OF THE CONNECTOR BODY GO THROUGH. ADHESIVE MUST NOT CONTACT CIRCUIT AREA.

02426ECO
PG. 5

CLASS CODE GROUP: 1 DIVISIONS
 CLASS CODE: 40 TECHNOLOGY DIVISION

OP: ORDER POLICY CODE
 REQ:N=PART OPTIONAL
 Y=PART REQUIRED
 PF: N=PART DOES NOT PRINT ON SALES ORDER
 Y=PART PRINTS ON SALES ORDER W/O PRICE
 P=PART PRINTS ON SALES ORDER WITH PRICE

509170-006 OFCODE: 0 REV: C PCA,CPU,E13B,RS232,SETEC
 MODEL: E13B,SETEC
 ECO NO: ~~02426ECO~~ **02426ECO**
 DATE OF LAST ECO: ~~7/11/92~~

PART NUMBER	DESCRIPTION	Q	ITEM	QTY	PER	YIELD	R	EP	DEFAULT	OFF	R	DAYS	REFERENCE	EFFECTIV	OBSOLETE
*354001-007	RES,1/8W,10K OHM,5%,SMD	0		29	3.000	.980	EA	P	YN	3.000	0	10	R26	00/00/00	99/99/99
*354001-008	RES, 1/8W, 4.7K OHM, 5%,SMD	0	A	30	5.000	.980	EA	P	YN	5.000	0	10	R22,R23 R24,R29 R31	00/00/00	99/99/99
*354001-006	RES,1/8W,2K OHM,5%,SMD	0		31	1.000	.980	EA	P	YN	1.000	0	10	R27	00/00/00	99/99/99
505300-001	RESIS PACK 10 PIN SIP 10 KOHM	0	B	32	3.000	1.000	EA	P	YN	3.000	0	0	RN1-RN3	00/00/00	99/99/99
*204002-002	DIODE,HIGH SPEED,914,SMD	0	A	33	7.000	.980	EA	P	YN	7.000	0	10	D1-D7	00/00/00	99/99/99
*417001-001	TRNSTR,HFN,8H SIG,3904,SMD	0	A	34	3.000	.980	EA	P	YN	3.000	0	10	Q1,Q5,Q9	00/00/00	99/99/99
*417001-002	TRNSTR,FNP,SM SIG,3906,SMD	0	A	35	3.000	.980	EA	P	YN	3.000	0	10	Q6,Q7,Q8	00/00/00	99/99/99
505304-005	XTAL QUARTZ 12MHZ	0		37	1.000	1.000	EA	P	YN	1.000	0	0	Y1	00/00/00	99/99/99
*150001-003	CAP,22PF,50V,3MD,1206	0		39	2.000	.980	EA	P	YN	2.000	0	10	C11,C12	00/00/00	99/99/99
170019-002	CONN,PHN JK,9/6PIN,LOW PCB 900	0	A	40	1.000	1.000	EA	P	YN	1.000	0	0	J1	00/00/00	99/99/99
433220-500-1027	WIRE JUMPER,22GA,20LID,BARE	0	A	42	.100	1.000	FT	P	YN	.100	0	0	E3	00/00/00	99/99/99
506305-029	PIN STAKE DUAL ROW 20 PDS VERT	0	A	43	1.000	1.000	EA	P	YN	1.000	0	0	J2	00/00/00	99/99/99
506306-005	PIN STAKE IRON 6PIN 0.319 VERT	0	A	44	2.000	1.000	EA	P	YN	2.000	0	0	J3,J3A	00/00/00	99/99/99
508951-001	CABLE ASSY,GROUND,7XX	0	B	45	2.000	1.000	EA	M	YN	2.000	0	0	GRD	00/00/00	99/99/99
401003-004	SWITCH,DIP,8 PDS,SMD	0	A	46	1.000	1.000	EA	P	YN	1.000	0	0	SW1	00/00/00	99/99/99
*150001-015	CAP,2.2MF,16V,SMD	0	A	47	1.000	.980	EA	P	YN	1.000	0	10	C18	00/00/00	99/99/99
*354001-029	RES, 0 OHM, JUMPER	0	A	48	1.000	.980	EA	P	YN	1.000	0	10	R39	00/00/00	99/99/99
*354001-025	RES,1/8W, 1 MOHM,5%,SMD	0	A	49	1.000	.980	EA	P	YN	1.000	0	10	R37	00/00/00	99/99/99
005050-000	WIRE JUMPER KYNAR 30AWG 1650-6	0	B	50	.300	1.000	FT	P	YN	.300	0	0		9/13/91	99/99/99
001398-000	SOLDER FLUXCORE 282 SN60 .025	0		51	0.000	1.000	LB	F	YN	0.000	0	0		6/04/92	99/99/99
006632-000	SOLDER PASTE,WATER SOLUBLE,SMT	0	A	99	2.000	1.000	GR	F	YN	2.000	0	0		6/04/92	99/99/99
509170-006	REV B BOM	0		201	0.000	1.000	EA	F	YN	0.000	0	0		6/04/92	99/99/99
509170-DWG	DWG,PCA,CPU,E13B	0	AB	202	0.000	1.000	EA	F	YN	0.000	0	0		00/00/00	99/99/99
509170-DWG	DWG REV A	0		203	0.000	1.000	EA	F	YN	0.000	0	0		00/00/00	99/99/99
0009999	MO,BUILD TO PRINT	0	A	204	0.000	1.000	EA	F	YN	0.000	0	0		00/00/00	99/99/99
0091070	TP,PCA,CPU,E13B	0	00	206	0.000	1.000	EA	F	YN	0.000	0	0		00/00/00	99/99/99
TA	T P REV A	0		207	0.000	1.000	EA	F	YN	0.000	0	0		10/23/91	99/99/99
509170-201-DWG	DWG,SCHEM,CPU,C19B	0	A	208	0.000	1.000	EA	F	YN	0.000	0	0		10/23/91	99/99/99
LA	LOGIC REV A	0		209	0.000	1.000	EA	F	YN	0.000	0	0		10/23/91	99/99/99

ASSEMBLY PART NUMBER?
 105310-002-0000 BLACKMAX 380 52 .001
 006430-000-ACCELERATOR 53 .001

BILL OF MATERIAL
 =====
 AS OF 11/30/92

02426ECO
PLG. 6

CLASS CODE GROUP: 1 DIVISIONS
 CLASS CODE: 42 TECHNOLOGY DIVISION

752TDA *pld*

589236-201 OPCODE: 4 REV: ^C13 MICH UNIT, ~~75X, TDA~~, SETEC
 MODEL: E13B, SETEC
 ECO NO: **02426ECO**
 DATE OF LAST ECO: 00/00/90

OP: ORDER POLICY CODE
 REQ: N=PART OPTIONAL
 Y=PART REQUIRED
 PF: N=PART DOES NOT PRINT ON SALES ORDER
 Y=PART PRINTS ON SALES ORDER W/C PRICE
 P=PART PRINTS ON SALES ORDER WITH PRICE

PART NUMBER	DESCRIPTION	Q	ITEM	QTY	PER	YIELD	R		DAYS		REFERENCE	EFFECTIV	OBSOLETE		
							EP	DEFAULT	OFF	SEQ				DESIGNATOR	DATE
		P	RV	NO.	ASSEMBLY	FACTR	UM	SC	QF	QUANTITY	SET	SEQ	DESIGNATOR	DATE	DATE
589235-003	HARDWARE KIT, 75X, ROLLER, SETEC	0	18	1	1.000	1.000	EA	X	YN	1.000	0	0	A1	00/00/00	99/99/99
589227-002	MAGSTRIPE OPTION, TDA, 75X	0	18	2	1.000	1.000	EA	X	YN	1.000	0	0	A5	00/00/00	99/99/99
589240-003	INTERFACE, RS232, 742/752, SETEC	0	18	3	1.000	1.000	EA	X	YN	1.000	0	0		8/01/91	99/99/99
589237-001	FRMWR/BAUD RATE, E13B, 1200/9600	0	19	4	1.000	1.000	EA	X	YN	1.000	0	0	A2	00/00/00	99/99/99
588855-011	PKG KIT, NO HSNB, E13B, SETEC	0	18	5	1.000	1.000	EA	X	YN	1.000	0	0		11/07/91	99/99/99
BA	REV A BOM	0		201	0.000	1.000	EA	F	YN	0.000	0	0		00/00/00	99/99/99
589236-DWG	DWG, MICH UNIT, 74X/75X, CONFIG	0	18	202	0.000	1.000	EA	F	YN	0.000	0	0		00/00/00	99/99/99
DA	DWG REV A	0		203	0.000	1.000	EA	F	YN	0.000	0	0		00/00/00	99/99/99
00099999	MO, BUILD TO PRINT	0	A	204	0.000	1.000	EA	F	YN	0.000	0	0		00/00/00	99/99/99
5891120	TP, RDR UNIT, E13B, W/COVER	0	00	206	0.000	1.000	EA	F	YN	0.000	0	0		00/00/00	99/99/99
TA	T P REV A	0		207	0.000	1.000	EA	F	YN	0.000	0	0		00/00/00	99/99/99

ASSEMBLY PART NUMBER? **1**

