

GEM

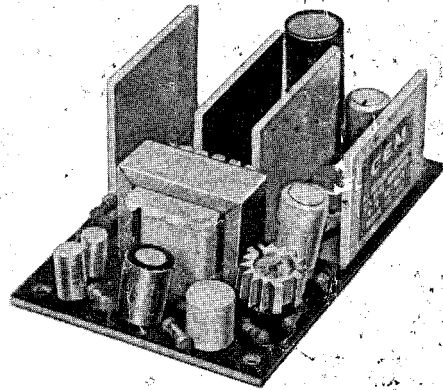
Model OTL-410

10-WATT OTL Hi-Fi AUDIO AMPLIFIER

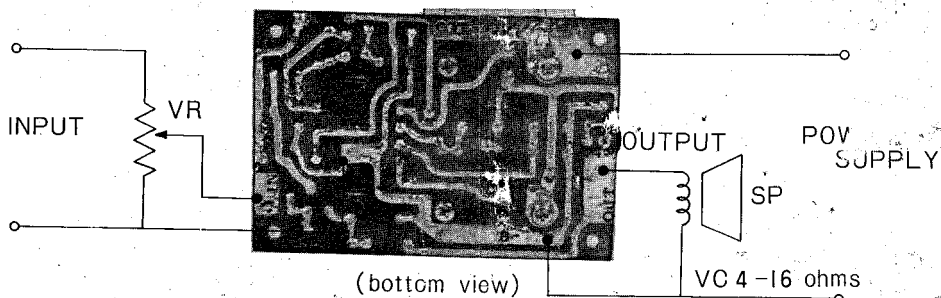
All Silicon Solid State

SPECIFICATION

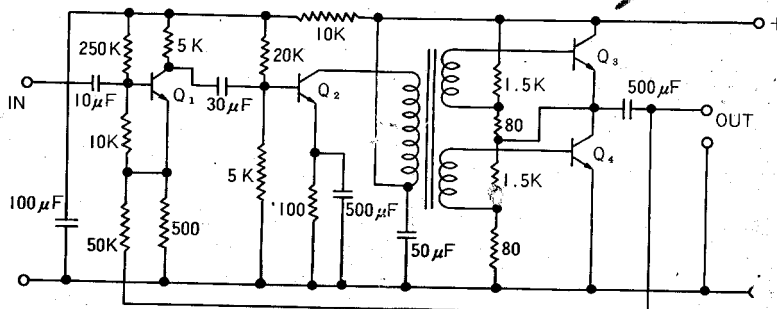
CIRCUIT :	4-transistor OTL
OUTPUT POWER :	13W max., 10W non-distorted
FREQUENCY RESPONSE :	30-40,000Hz
GAIN :	160mV for 10W output
INPUT IMP :	About 50K Ω
OUTPUT IMP :	4-16 Ω
POWER SOURCE :	D.C. 28V
CURRENT CONSUMPTION :	150mA at no-signal, 650mA for max. output
DIMENSION :	90x 60x 32mm
WEIGHT :	135g



EXTERNAL CONNECTION



CIRCUIT DIAGRAM



Handwritten notes:
- 233 235
1021150
410631