

# High-Efficiency Regulator has Low Drop-Out Voltage

National Semiconductor  
Application Brief 11  
September 1986



High-Efficiency Regulator has Low Drop-Out Voltage

Conventional regulators have a high drop-out voltage that is a function of the total output current. However, with just a regulator chip, an external transistor and a few passive components, this design forms a high output current regulator with a limited input voltage and high efficiency. The circuit presented has a drop-out of 0.7V at 5A load current and 1.3V at a current level of as high as 10A.

The circuit output voltage equals that of PNP regulator U1 and may be expressed as  $V_{OUT} = V_{REF} (R1 + R2)/R1$  where  $V_{REF}$  equals U1's reference voltage of 1.2V. To compensate for bias-current errors and to keep the extra quiescent current that is induced by this resistor network to a few  $\mu A$ , resistor R1 is set at 28 k $\Omega$ . Thus for a 5V regulated output voltage, R2 is set at 88.7 k $\Omega$ . In addition, the output voltage can be adjusted between 3V and 24V by varying R2.

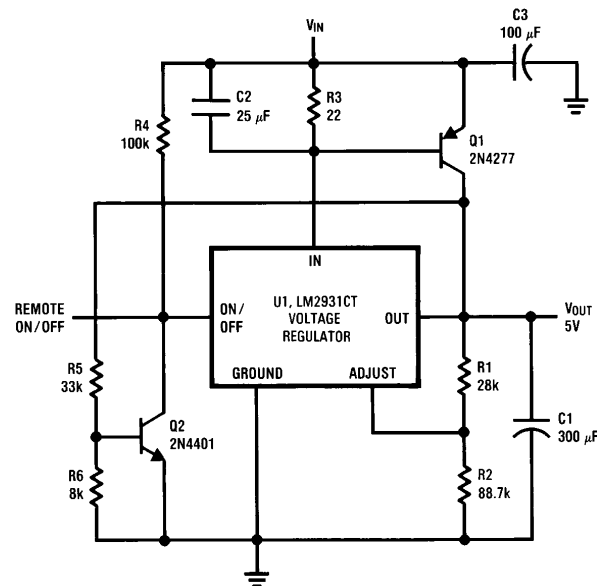
The circuit can handle a great deal of current because of external PNP transistor Q1. At high current levels, the circuit's drop-out voltage is a function of the saturation voltage of the PNP device. As a result, Q1 must have low saturation levels for  $V_{CE}$  and  $V_{BE}$  along with a high beta. In addition, the maximum output current is equal to the maximum output sink of regulator U1 multiplied by the maximum beta of Q1. A germanium transistor, such as a 2N4277 for the external pass element, satisfies the above requirements. For the

components shown, the circuit gives excellent regulation at  $V_{IN} = 5.7V$  up to 5A in load current, giving a drop-out of only 0.7V.

U1 is biased to a minimum of 30 mA by a resistor R3, which also functions as a bleeding resistor for Q1. The on-off pin of U1 permits extra remote on-off control and current-limiting functions for the circuit. Pulling this pin to ground enables the circuit, whereas keeping it open disables the circuit and leaves the regulator in the standby mode. The ratio R5:R6 limits the maximum output current. When the load current exceeds this maximum, the output voltage begins to fall and the voltage across R6 decreases. This low voltage cuts off transistor Q2, thereby disabling the circuit output. As a result, transistor Q1 and the load are protected from overdrive and damage.

## EFFICIENCY

Using National Semiconductor's regulator LM2931CT, external transistors Q1 and Q2, and a few passive components, this circuit forms a high-current regulator having a low drop-out. For the components shown in the figure, the regulator has a drop-out of 0.7V at 5A load current and 1.3V at a level as high as 10A. The on-off pin of regulator U1 provides remote control, while transistor Q2 limits the maximum output current.



TL/H/5523-1

Reprinted from *Electronics*, January 27, 1983 by permission.

LIFE SUPPORT POLICY

NATIONAL'S PRODUCTS ARE NOT AUTHORIZED FOR USE AS CRITICAL COMPONENTS IN LIFE SUPPORT DEVICES OR SYSTEMS WITHOUT THE EXPRESS WRITTEN APPROVAL OF THE PRESIDENT OF NATIONAL SEMICONDUCTOR CORPORATION. As used herein:

1. Life support devices or systems are devices or systems which, (a) are intended for surgical implant into the body, or (b) support or sustain life, and whose failure to perform, when properly used in accordance with instructions for use provided in the labeling, can be reasonably expected to result in a significant injury to the user.

2. A critical component is any component of a life support device or system whose failure to perform can be reasonably expected to cause the failure of the life support device or system, or to affect its safety or effectiveness.



**National Semiconductor Corporation**  
1111 West Bardin Road  
Arlington, TX 76017  
Tel: 1(800) 272-9959  
Fax: 1(800) 737-7018

**National Semiconductor Europe**  
Fax: (+49) 0-180-530 85 86  
Email: [cnjwge@tevm2.nsc.com](mailto:cnjwge@tevm2.nsc.com)  
Deutsch Tel: (+49) 0-180-530 85 85  
English Tel: (+49) 0-180-532 78 32  
Français Tel: (+49) 0-180-532 93 58  
Italiano Tel: (+49) 0-180-534 16 80

**National Semiconductor Hong Kong Ltd.**  
19th Floor, Straight Block,  
Ocean Centre, 5 Canton Rd.  
Tsimshatsui, Kowloon  
Hong Kong  
Tel: (852) 2737-1600  
Fax: (852) 2736-9960

**National Semiconductor Japan Ltd.**  
Tel: 81-043-299-2309  
Fax: 81-043-299-2408

National does not assume any responsibility for use of any circuitry described, no circuit patent licenses are implied and National reserves the right at any time without notice to change said circuitry and specifications.