

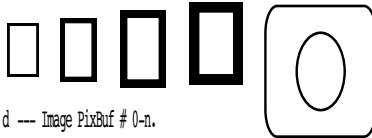
\$30FA trFatInit

Initializes the FatBits routines and allocates buffers.

Parameters



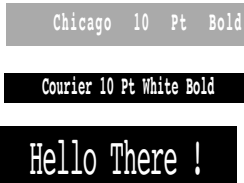
Stack before call :



previous contents	
PixBuf	Word --- Image PixBuf # 0-n.
FatPixBuf	Word --- FatBits PixBuf # 0-n.
Info	Word --- 0 = No InfoBar, 1 = InfoBar.
DLock	Word --- 0 = Dither Unlocked, 1 = Locked.
Magnify	Word --- 0 = 4X Magnify.
DTabPtr	Long --- POINTER to Custom Dither Table.
	← SP

Stack after call :

previous contents	
	← SP



Errors	\$FA01	IllegalPixBuf	PixBuf # Out of range.
	\$FA03	MemAllocFailure	Not enough memory.
	\$FA07	InactivePixBuf	PixBuf not open.

```
C
extern pascal void trFatInit(PixBuf, FatPixBuf, Info, DLock, Magnify, DTabPtr)
Word      PixBuf;
Word      FatPixBuf;
Word      Info;
Word      DLock;
Word      Magnify;
Pointer   DTabPtr;
```

Note: The FatBits PixBuf (FatPixBuf) should be opened prior to the FatInit call. It should have been sized as 256 wide and 156 deep for the No InfoBar mode. A setting of 144 deep can be used for the InfoBar Active mode, if desired. This PixBuf is for internal use by the FatBits routines only and should not be confused with the Image PixBuf, which is the image we're magnifying a section of with FatBits. The FatBits PixBuf must be set to a currently unused PixBuf.

If the Custom Dither pointer is null, then it's ignored. Otherwise, it should point to a pair of 256 byte (consecutive) pixel/byte translate tables. The first is the Even fatbit "half", the second is the Odd fatbit "half". Hint: For a 320 mode image, set DTabPtr to null and DLock to zero.

Caution: The Image Pixbuf must not have a depth greater than 500 lines ! This is because of certain limitations in the current FatBit routines.

Line 1

Line 2

Page Bottom line here ?